

Modern Art & Design, 30th May, 2024 11:00

1



LOUIS VUITTON IMPRESSIVE AND EARLY TRAVELLING TRUNK Circa 1890-1910, of large size and in studded tan leather with brass lock, clasps and mounts, initialled "G.J.G." to each side, the hinged lid retaining quilted lining, the interior bearing original "Louis Vuitton Paris 1 Rue Scribe London 454 Strand" paper label, serial no. 104265.
(Dimensions: 111cm wide, 62cm deep, 70cm high) **£4,000-6,000**

2



ROBERT WALLACE MARTIN FOR SOUTHALL POTTERY RARE PAIR OF LARGE STONEWARE PLANTERS Salt-glazed and moulded in high relief with birds and nests against repeated pattern of foliate scrolls beneath further inverted egg-and-dart-type moulding, the base interior pierced, both with impressed mark *R. W. Martin Southall Pottery* to both sides (one stamped twice to one side), one bearing incised signature *R. W. Martin Southall 1877* to base.
(Dimensions: 79.5cm wide, 22cm deep, 21cm high) **£300-500**

3



MARTIN BROTHERS SMALL STONEWARE POTTERY VASE OR PLANTER Late 19th century, shaped square form, the body covered in a metallic glaze and featuring repeated incised ovals, some with applied turquoise/teal glaze, signed *Martin Bros.* to base.
(Dimensions: 11cm wide, 10cm high) **£150-250**

4



RICHARD HODD & SON, THE DESIGN ATTRIBUTED TO DR. CHRISTOPHER DRESSER SILVER-PLATED THREE PIECE TEA SERVICE Circa 1882, comprising teapot, water pot and sugar bowl, with ebonised handles and reeded banding to bodies, all bearing engraved monogram *RMB*, all with impressed maker's marks and registration lozenge mark to bases.
(Dimensions: The teapot 18cm long, 15.5cm high) **£150-250**

5



ARTS & CRAFTS HAMMERED COPPER CASKET The hinged lid with initials 'C.L.C.' with floral decoration throughout, enclosing a two-compartment interior.
(Dimensions: 24.5cm wide, 15cm deep, 11cm high) **£50-100**

Modern Art & Design, 30th May, 2024 11:00

6



**BLAKEY'S IRONMONGERS ARTS & CRAFTS
STYLE HAMMERED COPPER FENDER**
Mid-20th century, with embossed and studded
decoration, bearing label.
(Dimensions: 135cm wide, 30cm deep, 9cm
high) **£50-100**

7



**GEORGIE SMITH FOR ROYAL DOULTON
STONEWARE JARDINIÈRE** Dated 1904, with
three faux bamboo moulded handles, further
relief moulded and gilt concentric decoration,
raised on three splayed supports, impressed
monogram and factory mark to interior.
(Dimensions: 25cm wide overall, 20.5cm high)
£80-120

8



**LILY PARTINGTON AND MINNIE WEBB FOR
ROYAL DOULTON PAIR OF STONEWARE
VASES** Early 20th century, tapered cylindrical
form, both with moulded relief foliate decoration
against toned and mottled green ground,
impressed monograms, factory marks and no.
6699 to bases.
(Dimensions: 25.5cm high) **£60-80**

9



**ASHWORTH POTTERY ART NOUVEAU
GLOBULAR VASE** With iridescent and drip
glaze on speckled olive ground, impressed mark
Ashworth 78 to base.
(Dimensions: 13cm high)
Ashworth Pottery of this type was only produced
circa 1909-1914 and was retailed by Liberty's,
London. **£60-100**

10



**DR. CHRISTOPHER DRESSER (BRITISH 1834
-1904) FOR JAMES COUPER & SONS,
GLASGOW "CLUTHA" GLASS BOTTLE VASE**
Circa 1890, the clear body with trailed blue and
bubble inclusions, acid etched mark "Clutha" to
base, trace of further mark "Designed by C.D.",
also bearing Liberty & Co. lotus flower
trademark.
(Dimensions: 19cm high)
"Clutha" is the old Gaelic name for Glasgow's
principle river, the Clyde; this series of
glassware was designed by Dresser as a new
venture for the Couper firm primarily known for
their scientific glass production. Dresser took
inspiration from Roman glass when designing
this range and it was retailed exclusively by
Liberty's in London, hence their trademark to the
base. **£400-600**

Modern Art & Design, 30th May, 2024 11:00

11



LOETZ, BOHEMIA ART NOUVEAU
IRIDESCENT GLASS LAMPSHADE Circa 1900,
the opalescent body in mottled green colourway
with blue trailing, unmarked.
(Dimensions: Base interior diameter 18.5cm,
10.5cm high) **£100-200**

12



ATTRIBUTED TO DAGOBERT PECHE FOR
GMUNDER KERAMIK AUSTRIAN
SECESSIONIST CREAM GLAZED BOWL &
COVER The shaped cover with reticulated detail
of fruiting vines, the bowl of shaped circular
form, unmarked.
(Dimensions: 17cm overall diameter, 19.8cm
high)
Executed in the manner of those Peche
designed circa 1914-19 for *Wiener Werkstatte*.
£200-300

13



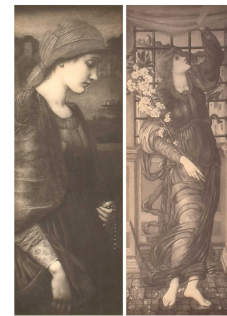
MINTON LTD "SECESSIONIST" POTTERY
VASE Gourd form with turquoise body glaze and
tube-lined detail, printed marks *Minton Ltd No.*
42 to base.
(Dimensions: 13.5cm high) **£40-60**

14



GOOD PAIR OF FRENCH GOTHIC REVIVAL
CAST-IRON GARDEN BENCHES Modelled
after a model by the Val d'Osne Foundry, late
19th century, white-painted, the backs with
trefoil and tracery motifs, the seats with
honeycomb pattern, apparently unmarked.
(Dimensions: 140cm wide, 50cm deep, 85cm
high) **£1,500-2,000**

15



AFTER EDWARD BURNE-JONES "FLAMMA
VESTALIS" AND "HOPE" Pair of late 19th/early
20th century monochrome lithographs, framed
and behind glass.
(Dimensions: The lithographs 50 x 18cm, the
frames 83 x 47.5cm) **£300-500**

16



Modern Art & Design, 30th May, 2024 11:00

LIBERTY & CO. ARTS & CRAFTS OAK CASED MANTEL CLOCK With shaped top above rectangular case decorated with stylised landscape motif in marquetry and inlaid polished pewter detail with further stringing, the white enamel dial set with Roman numerals, the stepped base raised on brassed compressed bun feet, with French movement.
(Dimensions: 16cm wide, 30.5cm deep) **£200-400**

17



ATTRIBUTED TO EDWARD SPENCER FOR THE ARTIFICERS' GUILD LTD., LONDON
HAND-BEATEN COPPER CIRCULAR WALL MIRROR Early 20th century, the frame featuring six roundels featuring relief foliate scrolls within banded borders, with central convex plate and oak backing, unmarked.
(Dimensions: 49cm diameter)

The Artificers' Guild was founded by Nelson Dawson in Chiswick, London, in 1901, passing to Montague Fordham in 1903 before Edward Spencer was appointed Director in 1906; it proved a successful venture, deriving inspiration from the Arts & Crafts movement and at its peak had a staff of forty as well as taking on orphaned boys as apprentices; its work was featured in the influential periodical *The Studio* and exhibitions were held at the Fordham Gallery alongside major names of the Arts & Crafts movement; it closed down following the outbreak of WWII.
£400-600

18



AFTER CHARLES RENNIE MACKINTOSH
"ARGYLL" SIDE OR DINING CHAIR Circa mid-late 20th century, stained and finished to an oak effect, with cream drop in seat.
(Dimensions: 48.5cm wide, 45cm deep, 138cm high)
Purchased in the Leek, Staffordshire, area in the late 1980s. **£100-200**

19



GEORGE WHITE FOR ROYAL DOULTON
"LEDA AND THE SWAN" URN Circa 1910, with gilt highlights and bands of pale green enamel, raised square section base, signed, printed *Doulton Burslem England* factory mark in green to base.
(Dimensions: 33cm high overall)
Private collection, Staffordshire. **£1,000-1,500**

20



WILLIAM MOORCROFT (BRITISH 1872-1945)
"POMEGRANATE" VASE Inverted bell form on spreading circular foot, the tube-lined decoration on ochre ground, signed *W. Moorcroft* in green to base, dated 1911 and stamped 994.
(Dimensions: 17.1cm high) **£200-400**

21



Modern Art & Design, 30th May, 2024 11:00

22

WILLIAM MOORCROFT "POMEGRANATE"
VASE Early 20th century, compressed bottle form, green signature and impressed marks to base.
(Dimensions: 17cm high) **£40-60**



BERNARD MOORE POTTERY TALL FLAMBE
CYLINDER VASE With ringed neck and foot, *BM* mark to base.
(Dimensions: 31cm high) **£100-200**

23



WILTON WARE ART DECO POTTERY
LUSTRE VASE Baluster form, decorated with a Chinoiserie landscape, printed and gilt marks with code "1603 5375" to base.
(Dimensions: 24.5cm high) **£60-100**

24



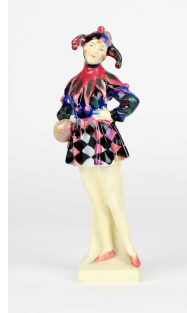
CHARLOTTE RHEAD (BRITISH 1885-1947)
POTTERY CHARGER Bearing tubelined floral decoration on a cream ground, signed to reverse.
(Dimensions: 36.5cm diameter) **£50-70**

25



LESLIE HARRADINE FOR ROYAL DOULTON
HN1344 "SUNSHINE GIRL" Circa 1929, decorated in green and black polka dot and striped bathing costume, printed and hand-painted marks to base.
(Dimensions: 13cm high)
Private collection, Staffordshire. **£800-1,200**

26



LESLIE HARRADINE FOR ROYAL DOULTON
HN1221 "LADY JESTER" Issued 1927-1938, in mottled pink and navy colourway with black cheques, printed and hand-painted marks to base.
(Dimensions: 18.2cm high)
Private collection, Staffordshire. **£200-400**

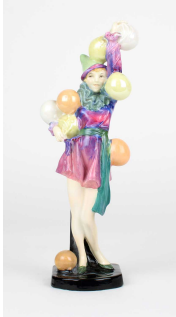
27



LESLIE HARRADINE FOR ROYAL DOULTON
HN687 "THE BATHER" Issued 1924-1949, in purple and navy robe with yellow shoes, printed and hand-painted marks to base.
(Dimensions: 19.5cm high)
Private collection, Staffordshire. **£200-400**

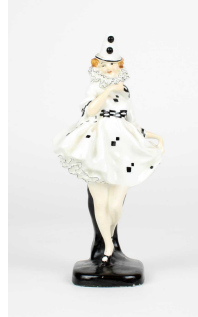
Modern Art & Design, 30th May, 2024 11:00

28



LESLIE HARRADINE FOR ROYAL DOULTON
HN1335 "FOLLY" Issued 1929-1938, in mottled pink dress with green details, printed and hand-painted marks to base.
Private collection, Staffordshire. **£200-400**

31



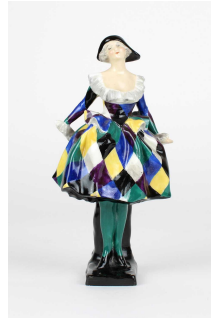
LESLIE HARRADINE FOR ROYAL DOULTON
HN644 "PIERETTE" Issued 1924-1938, white colourway with black detail, printed green and hand-painted marks to base.
(Dimensions: 18cm high)
Private collection, Staffordshire. **£200-400**

29



LESLIE HARRADINE FOR ROYAL DOULTON
HN1446 "MARIETTA" Issued 1931-1937, in purple and pink-toned dress with green cape, printed and hand-painted marks to base.
(Dimensions: 20cm high)
Private collection, Staffordshire. **£300-500**

32



LESLIE HARRADINE FOR ROYAL DOULTON
HN585 "HARLEQUINADE" Issued circa 1926-1940, in chequered dress of purple, blue, green, black, yellow and white, printed and hand-painted marks to base.
(Dimensions: 17.2cm high)
Private collection, Staffordshire. **£200-400**

30



LESLIE HARRADINE FOR ROYAL DOULTON
HN719 "BUTTERFLY" Issued 1925-40, black and pink colourway with polychrome detail, printed and hand-painted marks to base.
(Dimensions: 17cm high)
Private collection, Staffordshire. **£200-400**

33



CROWN DEVON ART DECO POTTERY
BULLDOG Circa 1930, cream glazed with painted detail including yellow and red studded collar, marked to underside.
(Dimensions: 16cm long) **£40-60**

Modern Art & Design, 30th May, 2024 11:00

34



VEDAR (VETRI DELLA ARTE) PAIR OF ITALIAN ART DECO CLEAR GLASS GOBLETs Circa 1925, decorated in enamels with a frieze of promenading peacocks and nude women, signed.
(Dimensions: 19.5cm high) **£200-300**

35



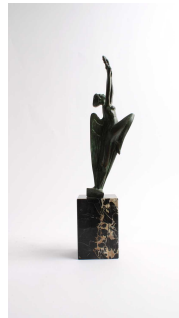
DAUM, NANCY FRENCH ART DECO GLASS BOWL Circa 1930, the body with acid-cut detail and repeated concentric motif in relief, signed *Daum Nancy France* to foot.
(Dimensions: 18cm diameter, 10.1cm high) **£300-500**

36



ART DECO MARBLE MANTEL CLOCK AND GARNITURE Circa 1920s-30s, bearing bronzed and silvered spelter figural surmount, the rectangular dial set with chromed Arabic numerals, the frontage below set with a chromed flower basket motif against coloured hardstone panels, the eight-day movement no. 1859 and striking on a bell, the garnitures set with chromed urns, all on stepped bases.
(Dimensions: The clock 46cm wide, 10.5cm deep, 21.5cm high) **£50-70**

37



ITALIAN ART DECO BRONZE SCULPTURE "VITTORIA" Modelled holding a laurel wreath aloft, patinated finish throughout, mounted on square section marble plinth base, bearing *A. de Dominicis Roma* retailer's label.
(Dimensions: 40.5cm high) **£150-250**

38



ART DECO WALNUT WALL MIRROR With original rectangular plate and curved edges.
(Dimensions: 71.5cm wide, 42.5cm high) **£60-100**

39



TWO ART DECO LIGHT FIXTURES The first a pendant light with moulded amber glass torch shade, the second a wall light with moulded scalloped shade, both with chrome plated mounts.
(Dimensions: The pendant light 35cm long overall) **£50-80**

Modern Art & Design, 30th May, 2024 11:00

40



MOTORING INTEREST, LARGE AND IMPRESSIVE ADVERTISING ENAMEL SIGN
"BP" MOTOR SPIRIT Early 20th century, further inscribed "J. Hilditch & Son Garage", no manufacturer's mark apparent, no flange.
(Dimensions: 123 x 181cm)
Private collection, Cheshire. **£300-500**

41



FRANCO SIGNS AA "12 MOTORS PARK HERE." ENAMEL SIGN Early 20th century, double-sided, signed *Franco Signs*.
(Dimensions: 64.5cm wide, 20.5cm high) **£150-250**

42



JAPANESE "MIKKY PHONE" PORTABLE GRAMOPHONE Circa 1930s, 78rpm crank mechanism, tri-spoke turntable, original soundbox and handle, in dark green textured case with carrying strap, accompanied by a selection of records.
(Dimensions: The case 15cm wide) **£100-200**

43



WELLS COATES FOR EKCO (E. K. COLE LTD.), SOUTHEND-ON-SEA "TYPE AC. 85" SUPERHET RADIO RECEIVER Circa 1934-35, faux-woodgrain Bakelite case, stamped marks and applied Patent label to reverse.
(Dimensions: 53cm wide, 32cm high) **£80-120**

44



WELLS COATES FOR EKCO (E. K. COLE LTD.), SOUTHEND-ON-SEA "TYPE AC. 85" SUPERHET RADIO RECEIVER Circa 1934-35, faux-woodgrain Bakelite case, stamped marks and applied Patent label to reverse.
(Dimensions: 53cm wide, 32cm high) **£80-120**

45



COLLECTION OF EARLY 20TH CENTURY RADIO VALVES Including boxed Osram, Marconi Osram, Cosmos Shortpath and B.T.H with further loose including BVA Cossor and mid-20th century including Mullard and Pinnacle, one with military issue broad arrow mark. **£100-200**

Modern Art & Design, 30th May, 2024 11:00

46



MONUMENTAL BRONZE "DRAGON" FOUNTAIN CAST IN THE ART DECO "CHINOISERIE" TASTE 20th century, patinated finish throughout, apparently unmarked. (Dimensions: 205.5cm high, 120cm long, 100cm wide (approximate))
Purportedly sourced from an historic property in Northern France being repurposed as a social care institution. **£4,000-6,000**

47



UMBERTO MASCAGNI FOR HARRODS ITALIAN "CHINOISERIE" DINING TABLE AND SIX CHAIRS Circa 1950s, the rectangular top decorated with bijin, the apron and supports with chromed detailing, the seats in cream faux leather, all raised on tapered supports. (Dimensions: The table 140cm long, 80cm wide, 75.5cm high; the chairs 98cm high, the seats 45cm deep) **£150-250**

48



UMBERTO MASCAGNI FOR HARRODS ITALIAN "CHINOISERIE" DRESSING TABLE Circa 1950s, mirror-backed, ebonised frame with faux leather, raised on tapered supports. (Dimensions: 161cm wide, 56cm deep, 117cm high) **£100-200**

49



EXTENDING DINING TABLE AND EIGHT CHAIRS Mid-20th century, burr walnut veneered, including two carvers, the rectangular table with stepped edge over two shaped supports on a plinth base, the rollback chairs in textured silver upholstery, burr walnut matched veneer backs on tapering chamfered supports united by 'H' stretchers. (Dimensions: Table: 208cm wide, 100.5cm deep, 74cm high. Standard chairs: 48cm wide, 53cm deep, 102cm high) **£200-400**

50



ATTRIBUTED TO GENET ET MICHON FRENCH MID-CENTURY FLOOR LAMP Circa 1940, the inverted brass bell-shaped shade on turned and tapered column to cast brass globe knob and scrolled tripod supports, unmarked. (Dimensions: 173.8cm high)
Genet et Michon were founded in 1947 and gained a reputation for furniture and lighting of high quality and style, continuing through the post-war years before eventually closing in the 1980s; while this lamp is not marked for the firm it bears certain hallmarks of their production such as the brass shade, the tapered column and cast globe knob. **£150-250**

Modern Art & Design, 30th May, 2024 11:00

51



SCIOLARI ROMA SET OF FIVE ITALIAN NEO-CLASSICAL STYLE GILT METAL WALL LIGHTS Circa 1960s, all twin-branch with foliate and scroll detail, beaded brackets and removable sconces, three retaining original paper labels.

(Dimensions: Each 22.5cm wide, 22cm high) **£100-200**

52



LOUIS SOGNOT (FRENCH 1872-1970) RARE PAIR OF LOW LOUNGE CHAIRS Circa 1955, birch framed with "Sadroplast" wire straps in green

(Dimensions: 54cm wide, 73cm deep, 87cm high) **£500-800**

53



ERNEST RACE (BRITISH 1913-1964) RARE "UNICORN" CHAIR Designed and manufactured 1958, plywood back and seat in grey finish on white painted steel rod supports, retaining *Race London England* label to underside.

(Dimensions: 68cm wide, 39cm deep, 55cm high)

This chair was designed by Ernest Race for the British Pavilion at the Brussels World's Fair in 1958 with production halted shortly after the exhibition finished, hence this is a rare example.

Race was and is a renowned furniture designer, famous for his "BA3" chair of 1945 and the "Antelope" chair designed for the Festival of Britain in 1951. **£400-600**

54



METALLIC SEAMLESS TUBE CO. LTD. "THE ALL-BRITISH ZEPHYR PATENT FAN" Mid-20th century, black coated iron with gimbal mount, patent no. 372499, bearing labels.

(Dimensions: 22cm wide, 31cm high) **£100-200**

55



SIR AMBROSE HEAL AND PHILIP TILDEN FOR HEALS OAK REFECTORY DINING TABLE Early 20th century, rectangular top raised on four turned column supports united by a platform base, maker's plaque to the underside, also stamped 7059.

(Dimensions: 183cm wide, 75cm deep, 75cm high) **£800-1,200**

Modern Art & Design, 30th May, 2024 11:00

56



HERBERT GIBBS FOR A. YOUNGER LONG SIDEBOARD Circa 1960s, with three lattice-panelled cupboard doors enclosing a single shelf and three short drawers, the top fitted for cutlery, with original handles, raised on tapered supports, bearing label.
(Dimensions: 204cm wide, 46cm deep, 73cm high) **£200-400**

57



HERBERT GIBBS FOR A. YOUNGER TEAK DISPLAY UNIT Circa 1960s, with arrangement of shelves above twin lattice-panelled cupboard doors with original handles, the reverse with applied backing, bearing label.
(Dimensions: 93cm wide, 38cm deep, 152cm high) **£50-100**

58



A & F H SET OF SIX TEAK DINING CHAIRS Circa 1960s, black vinyl leather-effect seats, shaped backs on tapered square section supports; with a teak extending rectangular dining table with leaves, unmarked.
(Dimensions: The chairs 76cm high; the table 86cm wide, 173cm long, 73.5cm high, 220cm long when extended) **£80-120**

59



LUCIAN ERCOLANI FOR ERCOL MODEL 384 "WINDSOR" DROP-LEAF DINING TABLE Circa 1960s, restored, the elm top on tapered beech supports.
(Dimensions: 112cm long, 60cm wide, 122cm wide extended, 71cm high)
To read more about the history of Ercol furniture follow this link:
<https://www.wilson55.com/modern-design/ercol/>
£200-400

60



LUCIAN ERCOLANI FOR ERCOL FIVE DINING CHAIRS All circa 1960s, all restored, comprising a pair of "Goldsmith" carvers, a pair of "Windsor" carvers and a further "Windsor" dining chair.
(Dimensions: The "Goldsmith" chairs 97cm high)
To read more about the history of Ercol furniture follow this link:
<https://www.wilson55.com/modern-design/ercol/>
£150-250

61



Modern Art & Design, 30th May, 2024 11:00

VICTOR WILKINS (ATTRIBUTED) FOR G-PLAN RECTANGULAR TEAK COFFEE TABLE
Circa late 1960s, with protruding glass top above slatted undertier.
(Dimensions: 123cm long, 47.5 wide, 41cm high) **£50-100**

64



ROBERT WELCH (BRITISH 1929-2000) FOR LUMITRON LTD "SERIES 3000" TABLE LAMP
Designed and manufactured circa 1966-69, with violet perspex shade and interior white acrylic diffuser on polished aluminium base.
(Dimensions: 65cm high) **£150-250**

62



ERCOL PAIR OF "SAVILLE" ELM EASY CHAIRS Model no. 850, with floral upholstered cushions.
(Dimensions: 85cm wide, 83cm deep, 96cm high) **£50-100**

65



RAYMOND WILKES (BRITISH 1936-) FOR HERMAN MILLER "CHICLET" TWO-SEATER SOFA Circa 1976, upholstered in purple wool fabric.
(Dimensions: 155cm wide, 80cm deep, 68.5cm high) **£800-1,200**

63



VERNER PANTON FOR VITRA SET OF FOUR "PANTON" CHAIRS First designed 1957, these the 1999 edition of the 1967 series produced by Vitra, all bearing raised "Verner Panton" signatures.
(Dimensions: 50cm wide, 65cm deep, 82cm high)
First conceived of in 1957, the "Panton" chair was the world's first all-plastic seat of cantilever design; it went into production with Vitra in 1967 and was revived in 1999. It's distinctive "S" silhouette is recognised worldwide as one of the classic designs of the twentieth century. **£100-200**

66



Modern Art & Design, 30th May, 2024 11:00

ROBERT HERITAGE (BRITISH 1927-2008)
FOR RACE FURNITURE PAIR OF "Q-RANGE"
LOUNGE CHAIRS Circa 1973, with leather armrests and backs, green fabric backs and seats on brushed aluminium frames, both retaining original labels.

(Dimensions: 61cm wide, 62cm deep, 75cm high)

This range of furniture was based on Heritage's designs for the Royal Yacht having been commissioned by Cunard to create a set of dining chairs in 1967 for the Queen Elizabeth II cruise liner. **£300-500**

67



DANISH TEAK FRAMED SOFA Circa 1970s, the swept arms with carved foliate detail, raised on cabriole front supports and upholstered in button back green cloth.

(Dimensions: 156cm wide, 76cm deep, 83cm high) **£150-250**

68



JOHN LEWIS AFTER ODD KNUTSEN "ZEST" OR "LUNA" LOUNGE CHAIR 1990s edition of the original 1970s design, ebonised plywood frame supporting "Havana Chocolate" faux leather seat.

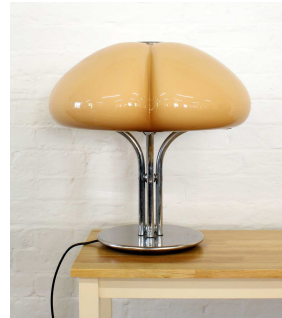
(Dimensions: 70cm wide, 80cm deep, 72.5cm high) **£80-120**

69



MICHEL DUCAROY FOR LIGNE ROSET
"KASHIMA" THREE-PART MODULAR SOFA
UNIT Designed 1976, this suite purchased circa 1980, comprising a one-armed settee, a "Medium" settee and a lounge chair, all in checkered two-tone grey fabric, bearing labels. (Dimensions: The one-armed settee 190cm wide, the "Medium" settee 160cm wide, the chair 100cm wide; all 100cm deep, 72cm high) Private family, Cumbria, owned from purchase new. **£2,000-4,000**

70



GAE AULENTI FOR HARVEY GUZZINI
ITALIAN "QUADRIFOGLIO" TABLE LAMP Circa 1970s, with shaped pale tan acrylic shade on four chrome plated columns to raised circular base.

(Dimensions: 50cm high, 51.5cm high including foot)

Private collection of lighting, North-West of England. **£600-1,000**

71



Modern Art & Design, 30th May, 2024 11:00

LUIGI MASSONI FOR HARVEY GUZZINI
ITALIAN "BRUMBRY" OR "BRUMBURY"
TABLE LAMP Designed 1972, this example
mid-late 1970s, with tan and white acrylic
shades on chrome plated base.
(Dimensions: 44cm high)
Private collection of lighting, North-West of
England.

The ingenuity of this design offers three different
lighting choices via a multiswitch with the upper
and lower shades able to be operated
independently with one or the other on or off, or
both on together. **£500-800**

72



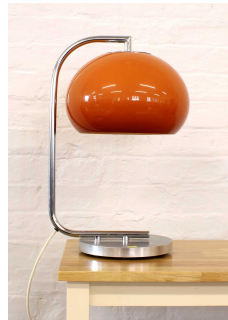
LUIGI MASSONI FOR HARVEY GUZZINI
ITALIAN "BRUMBRY" OR "BRUMBURY"
TABLE LAMP Designed 1972, this example
mid-late 1970s, with white acrylic shades on
chrome plated base.
(Dimensions: 44cm high)
Private collection of lighting, North-West of
England. **£400-600**

73



IGUZZINI (HARVEY GUZZINI) ITALIAN "ELPIS"
TABLE LAMP Produced circa 1968-82, this
example 1970s, with white acrylic mushroom-
shaped shade on conical chrome base to
bakelite foot, bearing *iGuzzinispa made in Italy*
label.
(Dimensions: 28cm high)
This lamp, often mistakenly referred to as a
"Mushroom" or "Fungo" lamp, is named "Elpis"
after the Greek mythological personification of
hope. **£200-400**

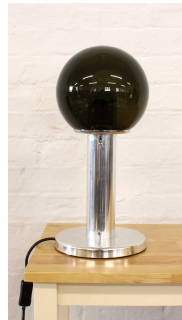
74



**ITALIAN TABLE LAMP IN THE STYLE OF
HARVEY GUZZINI** Circa 1970s, with burnt
orange acrylic shade suspended on chrome
plated frame to brushed aluminium base,
unmarked.

(Dimensions: 48.5cm high)
Private collection of lighting, North-West of
England. **£150-250**

75



**ITALIAN TABLE LAMP IN THE STYLE OF
TARGETTI SANKEY** Circa 1970s, with spherical
green glass shade on aluminium column to
weighted circular base, unmarked.
(Dimensions: 44cm high)
Private collection of lighting, North-West of
England. **£150-250**

76



Modern Art & Design, 30th May, 2024 11:00

PROVA ITALIAN ADJUSTABLE DESK LAMP
Circa 1960s-70s, brushed aluminium and ochre,
on atypical raised base, bearing *BHS* label to
underside.

(Dimensions: Height of central column including
base 42.5cm)

Private collection of lighting, North-West of
England.

Prova were an Italian manufacturer of lighting
producing affordable lamps inspired by Harvey
Guzzini and the Italian post-war design
movement; they were retailed in Britain primarily
through British Home Stores during the 1970s
and 80s. **£60-100**

77



PROVA ITALIAN ADJUSTABLE DESK LAMP
Circa 1960s-70s, brushed aluminium and ochre,
on slim circular base, bearing label for
McGavigan's Glasgow to upper side and
additional labels for the manufacturer and
British Home Stores to underside.

(Dimensions: Height of central column including
base 42cm)

Private collection of lighting, North-West of
England.

Prova were an Italian manufacturer of lighting
producing affordable lamps inspired by Harvey
Guzzini and the Italian post-war design
movement; they were retailed in Britain primarily
through British Home Stores during the 1970s
and 80s. **£60-100**

78



PROVA ITALIAN ADJUSTABLE DESK LAMP
Circa 1960s-70s, brushed aluminium and ochre,
on slim circular base.

(Dimensions: Height of central column including
base 41cm)

Private collection of lighting, North-West of
England.

Prova were an Italian manufacturer of lighting
producing affordable lamps inspired by Harvey
Guzzini and the Italian post-war design
movement; they were retailed in Britain primarily
through British Home Stores during the 1970s
and 80s. **£50-80**

79



"ROCKET LAMP" CIRCA 1970 With yellow
woven fibreglass shade on stained teak
supports.

(Dimensions: 112.5cm high) **£50-80**

80



HERBERT TERRY & SONS LTD., REDDITCH

"ANGLEPOISE 90" DESK LAMP 1970s
production, orange coated, stamped marks.
(Dimensions: Maximum height approximately
88cm) **£40-60**

81



Modern Art & Design, 30th May, 2024 11:00

82

GEOFFREY BAXTER FOR WHITEFRIARS
"COFFIN" VASE 1960s, Textured Range, in
"Tangerine Orange" colourway.
(Dimensions: 13cm high) **£40-60**



TAMARA ALADIN FOR RIIHIMÄKI (RIIHIMAEN LASI OY) FINNISH ART GLASS VASE No. 1461, circa 1966-67, turquoise/aqua colourway, relief linear detail against textured ground, together with a further amber and clear sommerso vase possibly by Bo Borgstrom for Aseda, Sweden.
(Dimensions: The first 22cm high.) **£40-60**

83



TAPPIO WIRKKALA (FINNISH 1915-1985) FOR IITALA SET OF "THULE" DRINKING GLASSES
Comprising six beakers and one mug, originally designed circa 1960s.
(Dimensions: 12.5cm high) **£60-100**

84



ARCHIMEDE SEGUSO (STYLE OF) MURANO GLASS BIRD AND ORIENTAL FIGURES Both in pink and clear colourways, the latter damaged, both unsigned.
(Dimensions: Pheasant: 29cm high, 50cm wide) **£80-120**

85



OIVA TOIKKA FOR IITTALA, FINLAND "RUBY BIRD" Designed 1992, this produced for the "Birds, Collection 2005" series, ruby glass with silver lustre, signed "O. Toikka Nuutajärvi" and retaining label to base, with "Birds. Small miracles." booklet in branded box.
(Dimensions: 19cm long, 13cm high)
To learn more about the history of iittala glass follow the link to our directory of Modern Design: <https://www.wilson55.com/modern-design/iittala/>
£100-200

86



GLASFORM BY JOHN DITCHFIELD STUDIO GLASS GLOBULAR VASE With molten opalescent trailing over iridescent mottled blue body, signed *J. Ditchfield Glasform 12904* and bearing *Glasform The Unique Collection* paper label.
(Dimensions: 13.1cm high) **£80-120**

87



GLASFORM BY JOHN DITCHFIELD STUDIO GLASS "MASK" PAPERWEIGHT The orange body with highly iridescent finish, retaining original label to reverse.
(Dimensions: 6cm wide, 9cm long) **£60-100**

Modern Art & Design, 30th May, 2024 11:00

88



MATS JONASSON MALERAS, SWEDEN
CRYSTAL "ATHENA" BOWL (BLUE) With reverse cut decoration, retaining original label and box.
(Dimensions: Diameter 17cm) **£60-100**

89



PERTHSHIRE MILLEFIORI PAPERWEIGHT
Circa 1990s, faceted top and "P" signature to central cane, together with another domed millefiori example, unsigned.
(Dimensions: The first 7.5cm diameter) **£40-60**

90



§ BARRY COOPER (BRITISH, CONTEMPORARY) BESPOKE FUSED GLASS INSTALLATION Rectangular pane divided into four tiles each with individual detail, mounted on a black coated board for wall display.
(Dimensions: 77cm wide, 37cm high overall)
Commissioned directly from the artist at Tatton Park Craft Fair in 2005. **£40-60**

91



ANDREW HULL POTTERY "CHICKEN SUPPER" FIGURE From 'The Villains Range', modelled as a fox in a waistcoat with a stolen chicken under his arm, painted and impressed marks to the base with signature, limited edition no. 31/65, dated April 2013.
(Dimensions: 23cm high) **£100-200**

92



ANDREW HULL POTTERY "STOP THIEF" FIGURE Colour trial, from 'The Villains Range', modelled as a badger dressed as a prison escapee with a swag bag, painted and impressed marks to the base with gold signature, dated November 2013.
(Dimensions: 23.5cm high) **£100-200**

93



ANDREW HULL POTTERY "ZAKARIE THE DRAGON" FIGURE Limited edition no. 08/30, painted and impressed marks to the base with gold signature.
(Dimensions: 26cm high) **£150-250**

Modern Art & Design, 30th May, 2024 11:00

94



MOORCROFT LARGE ADVERTISING VASE
Ovoid form, inscribed *Moorcroft* to both sides within tube-lined border, impressed marks and anchor date cypher to base.
(Dimensions: 40cm high) **£80-120**

97



MOORCROFT 1887-1997 CENTENARY CELEBRATION "YACHT" VASE Modelled after the "Florian" were original designed by William Moorcroft, bottle-form, numbered 8/8, signed *J. Moorcroft* with further impressed marks to base.
(Dimensions: 23.5cm high) **£50-70**

95



MOORCROFT TRUMPET VASE AND LANDSCAPE PLATE Both tubeline decorated on blue and green grounds respectively, with *WM* monograms and impressed marks to bases.
(Dimensions: The vase 22.5cm high, the plate 25.5cm diameter) **£60-80**

98



MOORCROFT "HIBISCUS" VASE, JARDINIÈRE AND BOWL All tubeline decorated against green ground, the vase and jardinière with painted *WM* monogram, the bowl with *Royal Appointment* label.
(Dimensions: Vase 21.2cm high, jardinière 12.3cm high, bowl 25cm diameter) **£80-120**

96



MOORCROFT SMALL "CLEMATIS" JARDINIÈRE AND PLATE Both tubeline decorated against green and navy grounds respectively, impressed marks to bases, latter with *WM* monogram.
(Dimensions: The jardinière 9cm high, the plate 25.5cm diameter) **£60-80**

99



MOORCROFT TWO "PUFFIN" PATTERN VASES The first and taller of bottle form, the second of baluster form, both with *WM* monograms and impressed marks to bases.
(Dimensions: The taller 29cm high) **£80-120**

Modern Art & Design, 30th May, 2024 11:00

100



RACHEL BISHOP FOR MOORCROFT RARE TRIAL "CATHEDRAL" VASE Tube-line decorated with three Biblical scenes - The Tree of Knowledge, Noah's Ark and an Archangel - against a navy ground, signed in gold pen *R. J. Bishop*, signed again and further inscribed *Trial 10-01-2000 WM*, and impressed with factory marks and date cypher.
(Dimensions: 41.8cm high)
Accompanied by the original note of purchase dated 10th May 2000 issued by the Moorcroft Factory Shop. **£800-1,200**

101



MOORCROFT "ANNA LILY" PATTERN VASE Inverted baluster form, painted *WM* monogram and impressed marks with leaf year cypher to base, boxed.
(Dimensions: 27cm high) **£60-100**

102



MOORCROFT "TIGER LILY", "GOLDEN JUBILEE" AND "BIRTH OF LIGHT (2000)" PLATES All boxed, together with a Poole Pottery "Wild Poppy" dish.
(Dimensions: The latter and largest 25.5cm diameter) **£50-80**

103



MOORCROFT "HIBISCUS" POT WITH COVER Tubeline decorated against green ground, impressed marks to base.
(Dimensions: 14.5cm diameter) **£60-80**

104



CHRISTIAN LACROIX PARIS "FOLLEMENT" SIX-SETTING COFFEE SERVICE From the "Arts de la Table" series, comprising six enamelled and gilded cups and saucers, housed in original branded box with booklet.
(Dimensions: The cups 6cm high, the saucers 12.5cm diameter) **£100-150**

105



§ GUIDO DE ZAN (ITALIAN 1947-) VASE Early 1990s, black pencil decoration, incised monogram mark to base.
(Dimensions: 35cm high) **£200-400**

Modern Art & Design, 30th May, 2024 11:00

106



§ ROBIN WELCH POTTERY (BRITISH 1939-2019) TABLE GOBLET AND PLATE Stoneware with speckled and banded glazes, the plate dished, the goblet on knopped stem to circular foot, impressed mark to bases.
(Dimensions: The goblet 12.8cm high, the plate 26.5cm diameter) **£40-60**

107



§ CHARLES C. BAILEY (BRITISH, ACTIVE MID-20TH CENTURY) FEMALE DRESSING Terracotta with bronzed finish, on rectangular base.
Charles C. Bailey (teacher of G. Key at Manchester Art College and friend of Henry Moore) Terracotta female figure
(Dimensions: 24cm high, 23cm long)
From the artist's estate; Charles C. Bailey taught respected Northern Artist Geoffrey Key at Manchester Art College and was a friend of renowned sculptor Henry Moore. **£350-450**

108



§ JOHN MALTBY (BRITISH 1936-2020) "KING" Stoneware sculpture with applied metal on oval base, impressed seal mark to reverse.
(Dimensions: 19cm high) **£400-600**

109



ANNE METTE HJORTSHØJ (DANISH 1973-) FOOTED BOWL Stoneware with salt glaze and red slip, impressed mark.
(Dimensions: 15.7cm diameter, 7.3cm high) **£60-100**

110



§ JEAN NICOLAS-GERARD (FRENCH, 1954-) YUNOMI AND DISHED PLATE Hand-thrown slipware, the yunomi with pale yellow glaze, linear and spattered glaze detail, the bowl with celadon glaze and similar detail, both with incised signature mark.
(Dimensions: The plate 25.5cm diameter) **£40-60**

111



ALAN CAIGER-SMITH (BRITISH 1930-2020) TIN-GLAZED EARTHENWARE BOWL Decorated in cream, green and red lustre, red banding and speckling to exterior, marked to base.
(Dimensions: 17.5cm diameter) **£50-80**

Modern Art & Design, 30th May, 2024 11:00

112



§ **BARRY STEDMAN (BRITISH 1965-)** SLAB-BUILT VESSEL Stoneware with matte and gloss glaze, impressed mark.
(Dimensions: 23cm wide, 18.5cm high) **£100-200**

115



§ **PETER HAYES (BRITISH 1946-)** RAKU BOTTLE Red with fractured surface, signed to rectangular black slate base.
(Dimensions: 32cm high) **£200-400**

113



§ **SIMON LEACH (BRITISH 1956-)** DEEP FOOTED BOWL Stoneware, part salt-glazed, the body with repeated cuts, impressed mark to base.
(Dimensions: 17.4cm diameter, 9cm high) **£50-80**

116



§ **PHIL ROGERS (BRITISH 1951-2020)** BOWL, YUNOMI AND COVERED DISH All hand-thrown stoneware with salt glaze, all bearing impressed marks, the covered dish with exhibition note for Aberystwyth University Gallery.
(Dimensions: The bowl 17.5cm diameter, the yunomi 10.2cm high) **£80-120**

114



§ **STEPHEN LUNT (BRITISH 1951-)** SLAB-BUILT BOTTLE Stoneware, spattered oxide glaze, thrown neck, impressed mark to base.
(Dimensions: 18.5cm wide, 25.5cm high) **£40-60**

117



§ **JIM MALONE (BRITISH 1946-)** BOWL AND YUNOMI Stoneware, the bowl interior with green ash pooled glaze and incised detail, the yunomi with cream slip and metallic detail, both with impressed marks.
(Dimensions: The bowl 22.2cm diameter, the yunomi 8cm high) **£60-100**

Modern Art & Design, 30th May, 2024 11:00

118



MIKE DODD (BRITISH 1943-) GLOBULAR VASE AND YUNOMI Both stoneware, the vase with green ash glaze and repeated incised detail, the faceted yunomi with tenmoku glaze to exterior, khaki to teal crackle glaze to interior, both with impressed mark.
(Dimensions: The vase 16.5cm high)
Both purchased from Goldmark, London. **£80-120**

119



PETER SPARRY (BRITISH 1967-) OVOID VASE AND YUNOMI Thrown stoneware, the vase with graduated brown to khaki glaze, the yunomi with Song-type tenmoku glaze to exterior and robin's egg glaze to interior, both with impressed marks.
(Dimensions: The vase 20cm high) **£80-120**

120



§ ASHRAF HANNA (BRITISH 1967-) CUT AND ALTERED VESSEL Earthenware with textured exterior white and interior purple finish, incised mark to base.
(Dimensions: 9cm high) **£250-350**

121



§ ASHRAF HANNA (BRITISH 1967-) CUT AND ALTERED VESSEL Earthenware with textured black finish, incised mark to base.
(Dimensions: 17cm high)
Some very small areas without black finish, presumably present from manufacture, otherwise good condition. **£400-600**

122



§ JACOB CHAN (CHINESE/BRITISH, CONTEMPORARY) DRAGON TEAPOT WITH COVER Soda fired stoneware, the globular body with moulded chilong, bearing seal mark.
(Dimensions: 21cm high including handle) **£150-250**

123



§ NICKY O'CONNOR (BRITISH, CONTEMPORARY) POTTERY WATERING CAN Green and purple glaze, together with a cut and altered stoneware vessel by Ashley Howard with copper barium blue glaze, impressed AH mark to base, and a slip decorated teapot by Angela Mitchell.
(Dimensions: The vessel 19.5cm high) **£60-100**

Modern Art & Design, 30th May, 2024 11:00

124



§ KIT ANDREWS "THE CORNISH POTTER" (BRITISH, CONTEMPORARY) PIT-FIRED VESSEL Elongated ovoid form, impressed *CP* mark to base.
(Dimensions: 23cm high) **£80-120**

125



§ KIT ANDREWS "THE CORNISH POTTER" (BRITISH, CONTEMPORARY) PIT-FIRED VESSEL Elongated ovoid form, impressed *CP* mark to base.
(Dimensions: 24cm high) **£80-120**

126



§ AKIKO HIRAI (JAPANESE 1970-) SAKE BOTTLE Stoneware with applied porcelain and white slip, marked to base.
(Dimensions: 13.5cm high) **£500-800**

127



§ MIAE KIM (SOUTH KOREAN 1970-) "BAMBOO" BOX AND COVER Slab-built clay with hand-carved detail on applied terra sigillata applied surface, the bamboo motif filled with yellow underglaze, further geometric glazed and unglazed detail, the cover with pierced and shaped handle, impressed signature to base.
(Dimensions: 20cm high)
Miae Kim was struck by a comment on how her work evoked Art Deco; after further consideration she has embraced how traditional Korean wall patterns and arrangements evoke the Deco visual language and incorporates it into her work as part of her "East Meets West" ceramic philosophy. **£200-300**

128



§ MIAE KIM (SOUTH KOREAN 1970-) "SKY, WIND, STAR, AND POEM" VASE Wheel-thrown stoneware, hand-carved repeated motif filled with underglaze, further applied mixed glaze, central band of *hangul* verse by the Korean poet Yun Dong-ju, signed to base.
(Dimensions: 23.5cm high)
Miae Kim, originally from South Korea, worked in the film industry in Los Angeles before finding her calling as a ceramicist. She now practices in London, hand-making domestic and decorative wares according to her "East Meets West" philosophy. **£200-300**

Modern Art & Design, 30th May, 2024 11:00

129



§ MIAE KIM (SOUTH KOREAN 1970-)
"HUMPBACK WHALE" JAR AND COVER
 Wheel-thrown clay, the design carved in outline to her own design and painted with underglazes before firing.
 (Dimensions: 24cm high)
 Miae was inspired by whale sightings when spending time in California and Hawaii, adapting their unique size and shape to her own ceramic art. **£200-300**

130



§ KERRY HASTINGS (BRITISH 1961-) **"BLUE FISH"** Stoneware sculptural vessel, hand-built using the coil and pinch technique, the legs thrown, applied vitreous slip (engobe), clay stamps impressed for surface texture, once-fired with kiln temperature gradually reaching 1160°. (Dimensions: 41.5cm high)
 Kerry Hastings graduated from the Harrow Ceramics Course in 2002 having studied under Steve Buck, Kyra Cane & Christie Brown. The single firing of her vessels is a crucial part of her philosophy, emphasising her belief in sustainability by reducing energy use; it also connects with the close relationship with the material she uses, seeing herself and it as co-creators and allowing the process to pass from the personal to the universal. The organic form of her vessels, with their bulges and hollows, develop a psychological and emotional resonance allowing one to relate themselves, however they naturally feel, to the pieces and their presence in the space. **£800-1,000**

131



§ KERRY HASTINGS (BRITISH 1961-)
"GREEN PIECE" Stoneware sculptural vessel, hand-built using the coil and pinch technique, the legs thrown, applied vitreous slip (engobe), clay stamps impressed for surface texture, once-fired with kiln temperature gradually reaching 1160°. (Dimensions: 51.5cm high)
 Kerry Hastings graduated from the Harrow Ceramics Course in 2002 having studied under Steve Buck, Kyra Cane & Christie Brown. The single firing of her vessels is a crucial part of her philosophy, emphasising her belief in sustainability by reducing energy use; it also connects with the close relationship with the material she uses, seeing herself and it as co-creators and allowing the process to pass from the personal to the universal. The organic form of her vessels, with their bulges and hollows, develop a psychological and emotional resonance allowing one to relate themselves, however they naturally feel, to the pieces and their presence in the space. **£1,200-1,500**

132



Modern Art & Design, 30th May, 2024 11:00

§ KERRY HASTINGS (BRITISH 1961-) "SO OVER THE MOON" Stoneware sculptural vessel, hand-built using the coil and pinch technique, the legs thrown, applied vitreous slip (engobe), clay stamps impressed for surface texture, once-fired with kiln temperature gradually reaching 1160°.

(Dimensions: 51cm high)

Kerry Hastings graduated from the Harrow Ceramics Course in 2002 having studied under Steve Buck, Kyra Cane & Christie Brown. The single firing of her vessels is a crucial part of her philosophy, emphasising her belief in sustainability by reducing energy use; it also connects with the close relationship with the material she uses, seeing herself and it as co-creators and allowing the process to pass from the personal to the universal. The organic form of her vessels, with their bulges and hollows, develop a psychological and emotional resonance allowing one to relate themselves, however they naturally feel, to the pieces and their presence in the space. **£1,200-1,500**

133



§ ANA SILVA (GUATEMALA 1982-) LARGE BOWL, FROM THE SERIES "YU'AM III" ("LIFE" IN Q'EQCHÍ) Hand-thrown stoneware, deep blue glaze, textured surface, signed to base. (Dimensions: 55cm diameter, 12cm high)

Mira-Mira is Ana Beatriz Silva's personal project. Unique pieces that pay tribute to the imperfection and the art around the pre-Hispanic roots in Guatemala. "In the imperfection relies the soul of the craftsman as well as the art's." This collection is inspired in the utilitarian ceramic as a native ancestral technique based on the beautiful Guatemalan plateau landscapes, using organic and contemporary techniques and shapes.

Each one of the pieces is unique and seeks to create harmony together or by itself, like every element that compose our landscapes and its different natural protagonists, cherishing as a whole or as an individual like a specific universe.

The elements: Animals. Its beauty and naivety, its beautiful and subtle existence. Plants. As organic entities in constant movement. Water. As the central element of life.

Each piece is designed to become in an object that participates in our daily living, making tribute to our nature and its relevance in our daily life. Besides, as every utilitarian piece is a co-creation because it's not finished until the user completes it. **£800-1,200**

134



Modern Art & Design, 30th May, 2024 11:00

§ ANA SILVA (GUATEMALA 1982-) FOOTED VESSEL, FROM THE SERIES "PATUX III" ("DUCK" IN Q`EQCHÍ) Hand-thrown stoneware, textured surface, dark green glaze, signed to base.

(Dimensions: 12cm diameter, 13cm high)

Mira-Mira is Ana Beatriz Silva's personal project.

Unique pieces that pay tribute to the imperfection and the art around the pre-Hispanic roots in Guatemala. "In the imperfection relies the soul of the craftsman as well as the art's."

This collection is inspired in the utilitarian ceramic as a native ancestral technique based on the beautiful Guatemalan plateau landscapes, using organic and contemporary techniques and shapes.

Each one of the pieces is unique and seeks to create harmony together or by itself, like every element that compose our landscapes and its different natural protagonists, cherishing as a whole or as an individual like a specific universe.

The elements: Animals. Its beauty and naivety, its beautiful and subtle existence. Plants. As organic entities in constant movement. Water. As the central element of life.

Each piece is designed to become in an object that participates in our daily living, making tribute to our nature and its relevance in our daily life. Besides, as every utilitarian piece is a co-creation because it's not finished until the user completes it. **£250-350**

135



§ ANA SILVA (GUATEMALA 1982-) FOOTED VESSEL, FROM THE SERIES "PATUX IV" ("DUCK" IN Q`EQCHÍ) Hand-thrown stoneware, textured surface, dark green glaze, signed to base.

(Dimensions: 15cm wide, 15cm high)

Mira-Mira is Ana Beatriz Silva's personal project.

Unique pieces that pay tribute to the imperfection and the art around the pre-Hispanic roots in Guatemala. "In the imperfection relies the soul of the craftsman as well as the art's."

This collection is inspired in the utilitarian ceramic as a native ancestral technique based on the beautiful Guatemalan plateau landscapes, using organic and contemporary techniques and shapes.

Each one of the pieces is unique and seeks to create harmony together or by itself, like every element that compose our landscapes and its different natural protagonists, cherishing as a whole or as an individual like a specific universe.

The elements: Animals. Its beauty and naivety, its beautiful and subtle existence. Plants. As organic entities in constant movement. Water. As the central element of life.

Each piece is designed to become in an object that participates in our daily living, making tribute to our nature and its relevance in our daily life. Besides, as every utilitarian piece is a co-creation because it's not finished until the user completes it. **£300-400**

136



Modern Art & Design, 30th May, 2024 11:00

§ ANA SILVA (GUATEMALA 1982-) ORGANIC VESSEL, FROM THE SERIES "AJ V" ("REEDBED" IN Q'EQCHÍ) Hand-thrown stoneware, mottled spinach green glaze, signed to base.

(Dimensions: 32cm wide, 18.5cm high)

Mira-Mira is Ana Beatriz Silva's personal project.

Unique pieces that pay tribute to the imperfection and the art around the pre-Hispanic roots in Guatemala. "In the imperfection relies the soul of the craftsman as well as the art's."

This collection is inspired in the utilitarian ceramic as a native ancestral technique based on the beautiful Guatemalan plateau landscapes, using organic and contemporary techniques and shapes.

Each one of the pieces is unique and seeks to create harmony together or by itself, like every element that compose our landscapes and its different natural protagonists, cherishing as a whole or as an individual like a specific universe.

The elements: Animals. Its beauty and naivety, its beautiful and subtle existence. Plants. As organic entities in constant movement. Water. As the central element of life.

Each piece is designed to become in an object that participates in our daily living, making tribute to our nature and its relevance in our daily life. Besides, as every utilitarian piece is a co-creation because it's not finished until the user completes it. **£300-400**

137



§ ANA SILVA (GUATEMALA 1982-) ORGANIC VESSEL, FROM THE SERIES "AJ IV" ("REEDBED" IN Q'EQCHÍ) Hand-thrown stoneware, mottled spinach green glaze, signed to base.

(Dimensions: 33cm long, 19cm high)

Mira-Mira is Ana Beatriz Silva's personal project.

Unique pieces that pay tribute to the imperfection and the art around the pre-Hispanic roots in Guatemala. "In the imperfection relies the soul of the craftsman as well as the art's."

This collection is inspired in the utilitarian ceramic as a native ancestral technique based on the beautiful Guatemalan plateau landscapes, using organic and contemporary techniques and shapes.

Each one of the pieces is unique and seeks to create harmony together or by itself, like every element that compose our landscapes and its different natural protagonists, cherishing as a whole or as an individual like a specific universe.

The elements: Animals. Its beauty and naivety, its beautiful and subtle existence. Plants. As organic entities in constant movement. Water. As the central element of life.

Each piece is designed to become in an object that participates in our daily living, making tribute to our nature and its relevance in our daily life. Besides, as every utilitarian piece is a co-creation because it's not finished until the user completes it. **£300-400**

138



Modern Art & Design, 30th May, 2024 11:00

§ ANA SILVA (GUATEMALA 1982-) ORGANIC VESSEL, FROM THE SERIES "AJ III" ("REEDBED" IN Q`EQCHÍ) Hand-thrown stoneware, mottled spinach green glaze, signed to base.

(Dimensions: 24cm high)

Mira-Mira is Ana Beatriz Silva's personal project. Unique pieces that pay tribute to the imperfection and the art around the pre-Hispanic roots in Guatemala. "In the imperfection relies the soul of the craftsman as well as the art's." This collection is inspired in the utilitarian ceramic as a native ancestral technique based on the beautiful Guatemalan plateau landscapes, using organic and contemporary techniques and shapes.

Each one of the pieces is unique and seeks to create harmony together or by itself, like every element that compose our landscapes and its different natural protagonists, cherishing as a whole or as an individual like a specific universe.

The elements: Animals. Its beauty and naivety, its beautiful and subtle existence. Plants. As organic entities in constant movement. Water. As the central element of life.

Each piece is designed to become in an object that participates in our daily living, making tribute to our nature and its relevance in our daily life. Besides, as every utilitarian piece is a co-creation because it's not finished until the user completes it. **£500-700**

139



§ ANA SILVA (GUATEMALA 1982-) ORGANIC VESSEL, FROM THE SERIES "AJ II" ("REEDBED" IN Q`EQCHÍ) Hand-thrown stoneware, mottled spinach green glaze, signed to base.

(Dimensions: 31.5cm high)

Mira-Mira is Ana Beatriz Silva's personal project. Unique pieces that pay tribute to the imperfection and the art around the pre-Hispanic roots in Guatemala. "In the imperfection relies the soul of the craftsman as well as the art's." This collection is inspired in the utilitarian ceramic as a native ancestral technique based on the beautiful Guatemalan plateau landscapes, using organic and contemporary techniques and shapes.

Each one of the pieces is unique and seeks to create harmony together or by itself, like every element that compose our landscapes and its different natural protagonists, cherishing as a whole or as an individual like a specific universe.

The elements: Animals. Its beauty and naivety, its beautiful and subtle existence. Plants. As organic entities in constant movement. Water. As the central element of life.

Each piece is designed to become in an object that participates in our daily living, making tribute to our nature and its relevance in our daily life. Besides, as every utilitarian piece is a co-creation because it's not finished until the user completes it. **£500-700**

140



Modern Art & Design, 30th May, 2024 11:00

§ ANA SILVA (GUATEMALA 1982-) FOOTED VESSEL, FROM THE SERIES "TZUKXUL V" ("SHEEP" IN Q`EQCHÍ) Hand-thrown stoneware, textured surface, black glaze.

US\$ 450

(Dimensions: 15cm diameter, 15cm high)

Mira-Mira is Ana Beatriz Silva's personal project.

Unique pieces that pay tribute to the imperfection and the art around the pre-Hispanic roots in Guatemala. "In the imperfection relies the soul of the craftsman as well as the art's."

This collection is inspired in the utilitarian ceramic as a native ancestral technique based on the beautiful Guatemalan plateau landscapes, using organic and contemporary techniques and shapes.

Each one of the pieces is unique and seeks to create harmony together or by itself, like every element that compose our landscapes and its different natural protagonists, cherishing as a whole or as an individual like a specific universe.

The elements: Animals. Its beauty and naivety, its beautiful and subtle existence. Plants. As organic entities in constant movement. Water. As the central element of life.

Each piece is designed to become in an object that participates in our daily living, making tribute to our nature and its relevance in our daily life. Besides, as every utilitarian piece is a co-creation because it's not finished until the user completes it. **£300-400**

141



§ ANA SILVA (GUATEMALA 1982-) FOOTED VESSEL, FROM THE SERIES "TZUKXUL VII" ("SHEEP" IN Q`EQCHÍ) Hand-thrown stoneware, textured surface, black glaze. (Dimensions: 21cm high)

Mira-Mira is Ana Beatriz Silva's personal project.

Unique pieces that pay tribute to the imperfection and the art around the pre-Hispanic roots in Guatemala. "In the imperfection relies the soul of the craftsman as well as the art's."

This collection is inspired in the utilitarian ceramic as a native ancestral technique based on the beautiful Guatemalan plateau landscapes, using organic and contemporary techniques and shapes.

Each one of the pieces is unique and seeks to create harmony together or by itself, like every element that compose our landscapes and its different natural protagonists, cherishing as a whole or as an individual like a specific universe.

The elements: Animals. Its beauty and naivety, its beautiful and subtle existence. Plants. As organic entities in constant movement. Water. As the central element of life.

Each piece is designed to become in an object that participates in our daily living, making tribute to our nature and its relevance in our daily life. Besides, as every utilitarian piece is a co-creation because it's not finished until the user completes it. **£100-150**

142



Modern Art & Design, 30th May, 2024 11:00

§ ANA SILVA (GUATEMALA 1982-) FOOTED VESSEL, FROM THE SERIES "TZUKXUL IV" ("SHEEP" IN Q`EQCHÍ) Hand-thrown stoneware, textured surface, black glaze. (Dimensions: 20cm high)

Mira-Mira is Ana Beatriz Silva's personal project. Unique pieces that pay tribute to the imperfection and the art around the pre-Hispanic roots in Guatemala. "In the imperfection relies the soul of the craftsman as well as the art's." This collection is inspired in the utilitarian ceramic as a native ancestral technique based on the beautiful Guatemalan plateau landscapes, using organic and contemporary techniques and shapes. Each one of the pieces is unique and seeks to create harmony together or by itself, like every element that compose our landscapes and its different natural protagonists, cherishing as a whole or as an individual like a specific universe.

The elements: Animals. Its beauty and naivety, its beautiful and subtle existence. Plants. As organic entities in constant movement. Water. As the central element of life.

Each piece is designed to become in an object that participates in our daily living, making tribute to our nature and its relevance in our daily life. Besides, as every utilitarian piece is a co-creation because it's not finished until the user completes it. **£300-400**

143



§ ANA SILVA (GUATEMALA 1982-) FOOTED VESSEL, FROM THE SERIES "TZUKXUL II" ("SHEEP" IN Q`EQCHÍ) Hand-thrown stoneware, textured surface, black glaze. (Dimensions: 24cm diameter, 24cm high)

Mira-Mira is Ana Beatriz Silva's personal project. Unique pieces that pay tribute to the imperfection and the art around the pre-Hispanic roots in Guatemala. "In the imperfection relies the soul of the craftsman as well as the art's." This collection is inspired in the utilitarian ceramic as a native ancestral technique based on the beautiful Guatemalan plateau landscapes, using organic and contemporary techniques and shapes. Each one of the pieces is unique and seeks to create harmony together or by itself, like every element that compose our landscapes and its different natural protagonists, cherishing as a whole or as an individual like a specific universe.

The elements: Animals. Its beauty and naivety, its beautiful and subtle existence. Plants. As organic entities in constant movement. Water. As the central element of life.

Each piece is designed to become in an object that participates in our daily living, making tribute to our nature and its relevance in our daily life. Besides, as every utilitarian piece is a co-creation because it's not finished until the user completes it. **£350-450**

144



Modern Art & Design, 30th May, 2024 11:00

§ ANA SILVA (GUATEMALA 1982-) FOOTED VESSEL, FROM THE SERIES "TZUKXUL III" ("SHEEP" IN Q`EQCHÍ) Hand-thrown stoneware, textured surface, black glaze. (Dimensions: 36cm high)
Mira-Mira is Ana Beatriz Silva's personal project. Unique pieces that pay tribute to the imperfection and the art around the pre-Hispanic roots in Guatemala. "In the imperfection relies the soul of the craftsman as well as the art's." This collection is inspired in the utilitarian ceramic as a native ancestral technique based on the beautiful Guatemalan plateau landscapes, using organic and contemporary techniques and shapes. Each one of the pieces is unique and seeks to create harmony together or by itself, like every element that compose our landscapes and its different natural protagonists, cherishing as a whole or as an individual like a specific universe.

The elements: Animals. Its beauty and naivety, its beautiful and subtle existence. Plants. As organic entities in constant movement. Water. As the central element of life. Each piece is designed to become in an object that participates in our daily living, making tribute to our nature and its relevance in our daily life. Besides, as every utilitarian piece is a co-creation because it's not finished until the user completes it. **£400-600**

145



§ ANA SILVA (GUATEMALA 1982-) LARGE FOOTED VESSEL, FROM THE SERIES "TZUKXUL I" ("SHEEP" IN Q`EQCHÍ) Hand-thrown stoneware, textured surface, black glaze. (Dimensions: 33cm diameter, 35cm high)
Mira-Mira is Ana Beatriz Silva's personal project. Unique pieces that pay tribute to the imperfection and the art around the pre-Hispanic roots in Guatemala. "In the imperfection relies the soul of the craftsman as well as the art's." This collection is inspired in the utilitarian ceramic as a native ancestral technique based on the beautiful Guatemalan plateau landscapes, using organic and contemporary techniques and shapes. Each one of the pieces is unique and seeks to create harmony together or by itself, like every element that compose our landscapes and its different natural protagonists, cherishing as a whole or as an individual like a specific universe.

The elements: Animals. Its beauty and naivety, its beautiful and subtle existence. Plants. As organic entities in constant movement. Water. As the central element of life. Each piece is designed to become in an object that participates in our daily living, making tribute to our nature and its relevance in our daily life. Besides, as every utilitarian piece is a co-creation because it's not finished until the user completes it. **£800-1,200**

146



Modern Art & Design, 30th May, 2024 11:00

§ JOHN WILLIAM MILLS PPRBS ARCA FRSA (BRITISH 1933-2023) "THE DANCERS" Large and impressive bronze figure group, bearing incised signature, no. 2/2, on circular black hardstone base.

(Dimensions: 131cm high)

Private collection in the North-West of England, thence by descent.

John William Mills PPRBS ARCA FRSA (British 1933-2023) is an award-winning sculptor in bronze and is best known for the 1991 National Firefighters Memorial outside St. Paul's Cathedral and 2005 Monument to the Women of World War Two in Whitehall.

Mills displayed prodigious talent in sculpture from a young age, exhibiting at the Royal Academy when still a teenager in 1951 and following that with his first solo exhibition in 1959; he has since exhibited internationally and his work is held in public and private collections. The challenge of resolving the counterbalance between the beauty and the power of ballet and capturing that paradox in bronze was one Mills uniquely mastered among British sculptors of his generation. **£3,000-5,000**

147



§ HANS BLATTER (CONTEMPORARY, LIKELY GERMAN/AUSTRIAN) ABSTRACT FIGURAL SCULPTURE Dated 1990, textured finish, incised signature to base interior.

(Dimensions: 37cm high) **£100-200**

148



JULIAN OPIE FOR HABITAT FOUR ROLLS OF PRINTED WALLPAPER Produced by Cole & Son, 53cm straight match, all unused, two sealed.

(Dimensions: Each roll 10.05m x 52cm) **£60-100**

149



TOM DIXON (AND OTHERS) FOR HABITAT COLLECTION OF PRINTED WALLPAPER Produced by Cole & Son, 76cm straight match, these sealed., together with further rolls by various designers.

(Dimensions: 10.05 x 52cm) **£40-60**

150



MATTHEW WILLIAMSON (AND OTHERS) FOR HABITAT COLLECTION OF PRINTED WALLPAPER Produced by Cole & Son, 53cm half drop, these sealed, together with further rolls by various designers.

(Dimensions: 10.05m x 52cm) **£40-60**

151



Modern Art & Design, 30th May, 2024 11:00

HARRODS EBONISED TELEVISION STAND AND PAIR OF SIDE TABLES The cabinet with a single open long shelf above four short drawers each with a chrome and black leather handle, the tables of matching design and raised on four square section legs.
(Dimensions: The cabinet 160cm wide, 50cm deep, 54cm high) **£100-200**

152



SIR TERENCE CONRAN FOR CONTENT BY CONRAN "ELLIPSE" OVERSIZED LOUNGE CHAIR Upholstered in chocolate brown leather with separate cushion, raised on tapered legs, bearing label.
(Dimensions: 140cm wide, 100cm deep, 78cm high) **£300-500**

153



CÀ NOVA DESIGN FOR CATTELAN ITALIA "INOX" COFFEE TABLE The two circular graduated glass tops on swivelling shaped supports to stainless steel base.
(Dimensions: Maximum 137cm wide, 39cm high, the tops 70cm diameter) **£200-400**

154



GIORGIO CATTELAN FOR CATTELAN ITALIA "ZEN" SIDE TABLE The circular stainless steel top on shaped stained beech support to stainless steel base, bearing mark to support base.
(Dimensions: 53.5cm high, the top 45cm diameter) **£100-200**

155



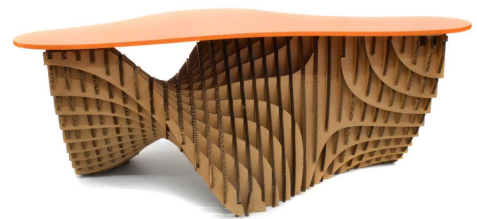
STEFANO GIOVANNONI FOR MAGIS, ITALY SET OF FOUR "BOMBO" BAR STOOLS Designed 1997, these purchased 2006, the swivel and height-adjustable seat shells in white ABS on polished aluminium bases with elliptical footrests, marked to undersides.
(Dimensions: Maximum height 85cm, the seats 44cm wide and 38cm deep) **£150-250**

156



CATTELAN ITALIA CHAISE LONGUE Possibly produced as a prototype or in a very limited run, acquired directly from the retailer in 2005, upholstered in stitched orange leather, with shaped headrest and distinctive split leg and foot supports, marked to underside.
(Dimensions: 195cm long, 55cm wide, 92cm high) **£200-400**

157



Modern Art & Design, 30th May, 2024 11:00

BÉTON BRUT PARAMETRIC-TYPE OFFICE / CENTRE TABLE With shaped orange lacquered top on constructed cardboard base.
(Dimensions: 181cm long, 80cm deep, 73cm high) **£50-100**

161



CALVIN KLEIN HOME "LINEN FLOWER" RUG Woven fine wool blend, bearing label.
(Dimensions: 160 x 229cm) **£50-100**

162



CALVIN KLEIN HOME "LUSTER" RUG Woven 100% New Zealand pile wool, bearing label.
(Dimensions: 168 x 244cm) **£50-100**

163



CALVIN KLEIN HOME LARGE "GRID WISP" CARPET Hand-loomed wool with cut and loop pile, bearing label.
(Dimensions: 236 x 330cm) **£80-120**

164



PATRICK NOURGET (FRENCH 1969-) FOR ARTIFORT "BOSON" LOUNGE CHAIR 2005, white enamelled fibre glass shell with blue cloth upholstery on chromed swivel base.
(Dimensions: 92cm wide, 85cm deep, 96cm high)

This chair took inspiration from and is named after the "Higgs-Boson", a sub-atomic particle that causes other particles to gain mass. **£300-500**

158



159



CALVIN KLEIN HOME "WINTER FLOWER" RUG Loom woven fine wool blend, bearing label.
(Dimensions: 160 x 228cm) **£50-100**

160



CALVIN KLEIN HOME "LUSTER WASHED" RUG Woven 100% New Zealand wool pile, bearing label.
(Dimensions: 168 x 244cm) **£50-100**

Modern Art & Design, 30th May, 2024 11:00

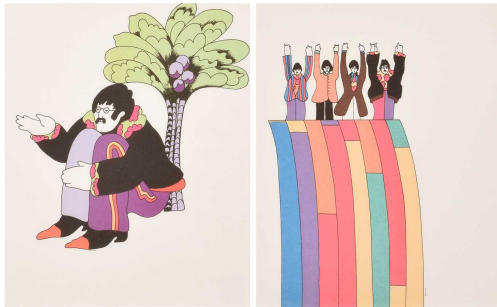
VINTAGE ZEBRA HIDE RUG Circa 1970s-80s, suede backed.
(Dimensions: 190 x 160cm) **£80-120**

165



THE BEATLES INTEREST "BEATLES '65" POSTER 1987 Apple Corps Ltd., published and distributed by Portal Publications Ltd., California, framed.
(Dimensions: 92 x 61.5cm overall) **£50-80**

166



PETER MAX (AMERICAN 1937-) FOR KING FEATURES SYNDICATE TWO "THE YELLOW SUBMARINE" OFF-SET LITHOGRAPHS Issued in 1968 as promotional stationery paper in the U.S. market for The Beatles' fourth feature film "The Yellow Submarine", bearing copyright marks for "KFS-Suba" (King Features Syndicate who co-produced the film).

(Dimensions: 25.7 x 21cm (framed 35 x 29.5cm))

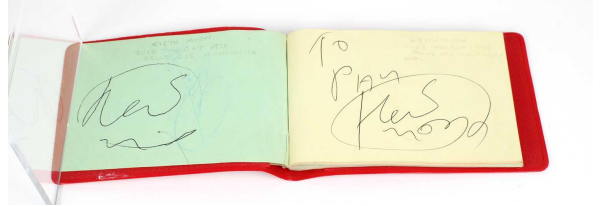
Both were purchased from Pedlars of Kincardineshire in 2012 and are accompanied by certificates. **£150-250**

167



THE BEATLES INTEREST TICKET STUB FOR A 1963 PERFORMANCE IN ARDWICK, MANCHESTER Held Wednesday 20th November at the A.B.C. Cinema, accompanied by a newspaper article covering the concert, a "The Beatles Show" Programme and the recollections of the attendee.
All obtained by the original attendee and vendor. **£60-100**

168



BRITISH ROCK MUSIC THE WHO AND OTHER AUTOGRAPHS comprising Keith Moon (twice, one personalised), John Entwistle (twice, one personalised) and Roger Daltrey (personalised), obtained by the vendor at a concert at the King's Hall venue, Belle Vue, Manchester, Tuesday 7th October 1975, with her John Smiths Entertainment "Ligger Pass" slip for the event; also, Eric Clapton, also obtained at the King's Hall late 1975/early 1976, and Phil Lynott obtained at the Free Trade Hall venue, again in this time period, all presented in a single autograph album.

All signatures obtained in person by the current vendor who can provide testimony of the circumstances (she wasn't satisfied with Keith Moon's first attempt so insisted that he do a second version); the vendor was photographed with Keith Moon at this event in Manchester and this image was included for the Keith Moon section of the inside artwork of the "The Story of The Who" LP issued in 1976. **£600-1,000**

169



PAUL REED SMITH GUITARS SE ORIANTHI ELECTRIC GUITAR With red sparkle finish and bird inlay fingerboard, with soft case. **£200-300**

Modern Art & Design, 30th May, 2024 11:00

170



IBANEZ SZ520 ELECTRIC GUITAR With through neck construction and quilted maple veneer top, with a soft case. **£100-200**

171



IBANEZ S521 1P-04 ELECTRIC GUITAR With thin edge natural finish Sapele body, serial number I 200205590, with hard case. (Dimensions: The case measures 109cm long) **£100-150**

172



YAMAHA PACIFICA ELECTRIC GUITAR With natural maple finish, serial number QJL273217, in fitted hardcase. **£40-60**

173



THREE ELECTRIC GUITARS AND A BASS GUITAR To include a Yamaha RGX 312, a Tokai Goldstar Sound strat and an Epiphone Les Paul, with altered neck lacking some parts, the bass by Washburn XB-100. **£100-200**

174



TAKAMINE KENNY CHESNEY SIGNATURE STEEL STRING ACOUSTIC GUITAR Model KC70, the maker's label with artist signature and serial number 223, the neck numbered 08110742, with rosewood headstock, fingerboard and bridge, cedar top, sapele back and sides, and pearl and abalone inlay, with maker's hardcase.

(Dimensions: The case measures 110cm long) **£600-800**

175



KIT-FORM SG ELECTRIC GUITAR Complete with pickups and hardware, also a part made SG, two guitar necks, and various pickups and guitar parts. **£80-120**

176



Modern Art & Design, 30th May, 2024 11:00

COLLECTION OF GUITAR EFFECTS UNITS AND STUDIO EQUIPMENT Including a Boss Chorus ensemble CE5, MXR Dyna Comp, CM6 Compressor, VD400 Vintage delay, Daelectro Fab Flange, two G3 Little Bear, Audiostorm Quad Screamer, Beringer Ultra G DI box, Alesis Nano Compressor, Vox stomp lab, Sure and Beringer microphones, Marshall mini stack amp, a microphone stand and various cables etc. **£100-200**

177



SASHA MORGENTHALER SEVEN "SASHA" DOLLS Circa 1960s/70s, comprising one male "Gregor" doll, four girl dolls and two baby dolls, in various outfits. **£200-400**

178



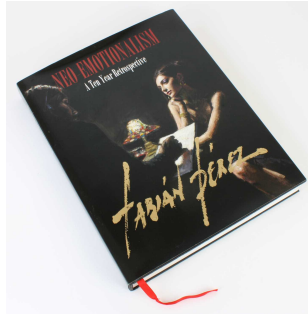
MUHAMMAD ALI: A THIRTY-YEAR JOURNEY BINGHAM (H. L.) Signed on laid down "Best Wishes" card to title page by Muhammad Ali and Howard L. Bingham, pub. Robson Books, London 1993, blue cloth boards with price-clipped dust jacket. **£100-200**

179



FRANCO MARIA RICCI (FMR) FOUR ART REFERENCE BOOKS AND ONE OTHER To include Tarots The Visconti Pack in Bergamo and New York, Italo Calvino 1967. Rene Gruau, Patrick Mauries 1984. Erte, Roland Barthes 1972. Valentino, Andre Leon Talley 1982. Plus Picabia, Maria Lluisa Borrás, Rizzoli 1985. **£80-120**

180



FABIAN PEREZ (ARGENTINIAN 1967-) "NEO-EMOTIONALISM - A TEN YEAR RETROSPECTIVE" Signed in pen by the artist, published in 2013 by Fabian Perez Art Publishing LLC, hardback book with dustcover. (Dimensions: 37.5 x 30 x 4.5cm) **£80-120**

181



MONTBLANC "AGATHA CHRISTIE" LIMITED EDITION MEISTERSTUCK FOUNTAIN PEN No. 14678/30000, .925 silver mounted, the snake head clip with gem-set eyes, two-tone 18K nib no. 4810, cased with outer box. **£600-1,000**

182



Modern Art & Design, 30th May, 2024 11:00

MONTBLANC "PRINCESS GRACE DE MONACO" BALLPOINT/ROLLERBALL PEN
Serial no. MBMDSTM79, with platinum-plated mounts, the clip set with a pear-cut pink topaz. This pen celebrates the life of Grace Kelly (1929-82) who became Princess of Monaco when she married Prince Rainier III in 1956. **£200-400**

183



MONTBLANC "GENERATION" FOUNTAIN PEN With gold-plated mounts and yellow 14K nib. **£80-120**

184



MONTBLANC "MEISTERSTUCK" BALLPOINT/ROLLERBALL PEN With branded two-division leather pouch and a selection of refills and cartridges. **£80-120**

185



DAVID OSCARSON FINE "CELESTIAL" LIMITED EDITION FOUNTAIN PEN No.29/88, silver mounted with Birmingham hallmarks, the guilloche enamel decorated cap and barrel bearing sun and moon motifs respectively, 18K M nib, cased, with outer box, sealed branded pen wipe, handling gloves and a branded leather pouch.
Private collection, North-West of England. **£1,500-2,000**

186



MICHEL PERCHIN FINE "GOTHIC" LIMITED EDITION FOUNTAIN PEN The cap no. 30/250, the barrel no. 199/250, the cap in .925 silver and the barrel .925 silver mounted, two-tone 18K M nib, with branded wooden case and outer box. Private collection, North-West of England. For another example please see Christie's, 20/03/2014:
<https://www.christies.com/en/lot/lot-5774901>
£1,000-1,500

187



MARLEN, ITALY "EGIZIA" LIMITED EDITION FOUNTAIN PEN No. 129/588, inspired by Ancient Egypt, banded in resin with .925 silver mounts, two-tone 14K M nib, piston filling system, cased with booklets and branded outer box.
Private collection, North-West of England. **£300-500**

Modern Art & Design, 30th May, 2024 11:00

188



MARLEN, ITALY "SUNDIAL" LIMITED EDITION FOUNTAIN PEN .925 silver mounted with black resin accents, the barrel with adjustable clip modelled as a gnomon, the cap numbered 19, two-tone 18K nib, cased with booklet and outer box.

The pen, booklet and case excellent, outer box worn. **£400-600**

191



GRIFOS, ITALY STINGRAY-HIDE FOUNTAIN PEN In "Volcano Grey", white 18K nib, in branded wooden case inset with silver cartouche.

Private collection, North-West of England. **£80-120**

189



TIBALDI, FIRENZE "IRIDE" LIMITED EDITION FOUNTAIN PEN One of 1,100 worldwide, in transparent mother-of-pearl red celluloid, yellow 18K "Tibaldi Extra" nib, presented with booklet and boxed Tibaldi ink pot in branded clear crystal display case.

Private collection, North-West of England. **£200-400**

192



MONTEGRAPPA .925 SILVER MOUNTED FOUNTAIN PEN AND PROPELLING PENCIL Both with Greek key detail, the fountain pen with two-tone M nib, each in pouch and in branded wooden case. **£150-250**

193



VISCONTI, FIRENZE "THE FORTUNE DRAGON" LIMITED EDITION FOUNTAIN PEN No. 107/888 worldwide in Vermeil finish, two-tone 18K F nib, in red lacquered case with booklet and Certificate of Control, with outer box.

Private collection, North-West of England. **£400-600**

190



GRIFOS, ITALY "HARLEQUIN" FOUNTAIN PEN In tortoiseshell resin with gilt-metal mounts and .925 silver engine turned grip, two-tone yellow and white metal nib, cased.

Private collection, North-West of England. **£50-80**

Modern Art & Design, 30th May, 2024 11:00

194



CLAUDIO MAZZI FOR VISCONTI, FIRENZE
"THE DRAGON" LIMITED EDITION FOUNTAIN
PEN No. 703/88, from the "Millennium" series,
two-tone 18k M nib, in pictorial case with booklet
and outer box.
Private collection, North-West of England. **£200-
400**

197



CLAUDIO MAZZI FOR VISCONTI, FIRENZE
"RED SYMPHONY" LIMITED EDITION
FOUNTAIN PEN No. 31/205, from "The Mazzi
Collection 2005" series, yellow 14K M nib, in
leather case with and booklet, with outer box.
Private collection, North-West of England. **£200-
400**

195



CLAUDIO MAZZI FOR VISCONTI, FIRENZE
"BLUE SYMPHONY" LIMITED EDITION
FOUNTAIN PEN No. 006/206, "Venice Carnival"
theme from the "Mazzi 2006" series, code
56702, 14K and platinum plated B nib, in leather
case with Identity Card and ink, with outer box.
Private collection, North-West of England. **£200-
400**

198



**DENIS MONTI, NEW ZEALAND ANCIENT
KAURI TIMBER MOUNTED FOUNTAIN PEN**
Crafted in Napier with stainless steel mounts
and two-tone iridium point nib, with certificate,
cased. **£100-200**

196



CLAUDIO MAZZI FOR VISCONTI, FIRENZE
"RUNNING IN THE SPACE" LIMITED EDITION
FOUNTAIN PEN One of 205 of this theme
produced, from "The Mazzi Collection" series of
2005, white 14K M nib, with ink and booklet in
leather case and branded outer box.
Private collection, North-West of England. **£200-
400**

199



Modern Art & Design, 30th May, 2024 11:00

PARKER STERLING SILVER "SNAKE" LIMITED EDITION FOUNTAIN PEN No. 3088/5000, bearing full hallmarks for London 1997, both snake heads with green gem-set eyes, two-tone 18K nib, in associated hardcase and outer box.

The grip section of the barrel comes away with the cap when taken off, there may be a broken piece where this connects with the cartridge; cap itself easily removed from the grip but this is an issue which will benefit from attention; images provided for reference; otherwise no issues to note. **£300-500**

202



PARKER DUOFOLD USA-MADE FOUNTAIN PEN AND PENCIL DUO Circa 1940s, both in matching striped resin colourway with gold-plated mounts, the fountain pen with yellow metal nib, in Parker USA branded hardcase. Private collection, North-West of England. **£80-120**

200



PARKER DUOFOLD "CLOISONNÉ" LIMITED EDITION FOUNTAIN PEN No. 3047/3900, a 2006 reissue of the 1927 original, with booklet, Warranty Card and "Penman" ink bottle, two-tone 18K nib, presented in fitted hardcase, branded outer box and sleeve.

Private collection, North-West of England. **£400-600**

203



PARKER DUOFOLD CENTENNIAL EDITION "MOZAIC" FOUNTAIN PEN In "Black" colourway with platinum-plated accents, white 18K nib.

Private collection, North-West of England. **£80-120**

201



PARKER DUOFOLD "MANDARIN" LIMITED EDITION FOUNTAIN PEN No. 7360, produced 2005 as a reissue of the 1927 original, yellow 18K nib, in branded box with papers.

Private collection, North-West of England. **£300-500**

204



PARKER U.S.A. TWO "VACUMATIC" FOUNTAIN PENS Circa 1930s, both in striped resin with gold-plated mounts, one with blue enamel lozenge motif to clip, both with yellow metal nibs.

Private collection, North-West of England. **£50-80**

Modern Art & Design, 30th May, 2024 11:00

205



PARKER USA "ROYAL CHALLENGER" FOUNTAIN PEN Circa 1937, with "Herringbone" design and "Sword" clip, yellow metal nib. Private collection, North-West of England. **£80-120**

206



PARKER "51" AND "DOUFOLD" FOUNTAIN PENS In turquoise and navy colourways respectively, together with a selection of vacant Parker and other pen boxes. **£50-80**

207



PARKER FOUNTAIN PEN With 18ct gold nib, in pouch. (Dimensions: 13.5cm long) **£50-100**

208



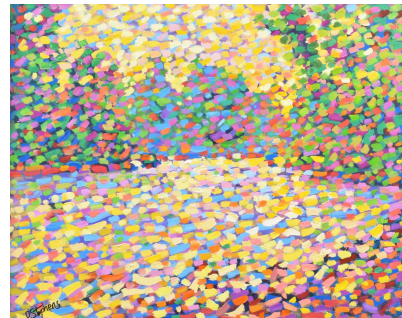
COLLECTION OF FOUNTAIN PENS, BALLPOINT PENS AND PENCILS Including three Sheaffer fountain pens with 14k nibs, single Parker and Waterman's fountain pens each with 14k nib, two JIF Waterman's four-colour ballpoints, a sterling silver pencil and two further pencils including a Parker. **£80-120**

209



COLLECTOR'S PEN DISPLAY CASE AND FURTHER WRITING ACCESSORIES The case with two trays, together with a Marlen advertising tabletop sign, five Marlen pen stands, three silver plate mounted inkwells and a set of Crane's stationery. **£50-80**

210



PAUL STEPHENS (BRITISH 20TH/21ST CENTURY) "ALONG THE RIVER TRENT (TOWARDS EVENING SUNSET)" Signed, titled on verso, oil on board. (Dimensions: 39.5 x 49.5cm (framed framed 51 x 61cm)) **£100-200**

211



Modern Art & Design, 30th May, 2024 11:00

§ JOHN AFFLICK (BRITISH 1967-) "NIGHT LIGHTS" Signed, oil on canvas laid on board. (Dimensions: 59 x 49.5cm (framed 77.5 x 68cm))

Artists' Resale Right ("droit de suite") may apply to this lot. £1,200-1,800

212



§ SANDRA BLOW (BRITISH 1925-2006) "FLOWER MOTIF" Signed, titled and dated 1983 on verso, acrylic on board canvas collage. (Dimensions: 122 x 122cm (framed 125 x 125cm))

Artists' Resale Right ("droit de suite") may apply to this lot. £1,500-2,000

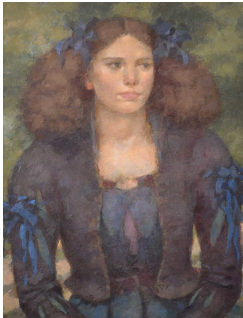
213



PETER ROCKLIN (BRITISH 20TH/21ST CENTURY) "WATCHING THE PARADE" Signed, titled and dated 2011 on verso, oil on panel.

(Dimensions: 101.5 x 101.5cm (framed 105 x 105 x 7.5cm)) **£200-400**

214

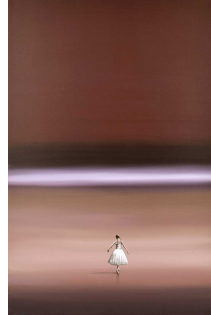


§ CHRIS BENNETT (BRITISH 1957-) "WOMAN IN BLUE" Unsigned, titled and dated 2012 on exhibition label - 'ROI, Mall Galleries, London' verso, acrylic on gesso.

(Dimensions: 44 x 34cm (framed 72.5 x 62.5cm))

Artists' Resale Right ("droit de suite") may apply to this lot. £300-500

215



§ STEVE JOHNSTON (BRITISH 1956-) "DANCER BY THE SEA" Signed and dated 2004 on verso, titled on artist's label, oil and acrylic on canvas.

(Dimensions: 120 x 80cm)

Artists' Resale Right ("droit de suite") may apply to this lot. £200-400

216



§ PETER WILEMAN (BRITISH 1946-) "THE AMITY" Signed, oil on board.

(Dimensions: 29.5 x 39.5cm (framed 45.5 x 55.5))

Artists' Resale Right ("droit de suite") may apply to this lot. £200-400

217



Modern Art & Design, 30th May, 2024 11:00

218

KATIE WILKINS (BRITISH 20TH/21ST CENTURY) PORTRAIT OF A HEREFORD BULL Signed, acrylic on canvas.
(Dimensions: 30.5 x 30.5cm) **£50-100**



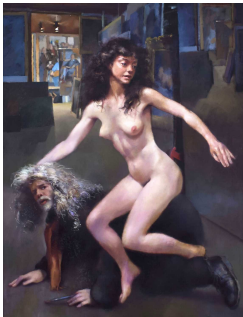
§ GEORGE DOWNS (BRITISH 1901-1983) "DOCKLANDS" Signed, titled and dated 1945 on label verso, oil on canvas.
(Dimensions: 64.5 x 89.5cm (framed 77.5 x 103cm))
Artists' Resale Right ("droit de suite") may apply to this lot. £200-400

219



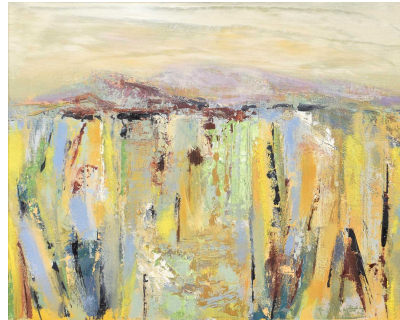
§ JOHN MELVILLE (BRITISH 1902-1986) STREET SCENE Signed, with letter of authenticity on verso, watercolour and crayon.
(Dimensions: 25 x 25.5cm (framed 60 x 60cm))
Artists' Resale Right ("droit de suite") may apply to this lot. £100-200

220



§ † ROBERT OSCAR LENKIEWICZ (BRITISH 1941-2002) "THE PAINTER WITH LOUISE COURTNEILL" Signed and extensively titled on verso - "The Painter with Women, Observations on the Theme of the 'Double', Project 18 'Aristotle and Phyllis' Theme", oil on canvas.
(Dimensions: 174 x 131.5cm (framed 193 x 151cm))
Artists' Resale Right ("droit de suite") may apply to this lot. £3,000-5,000

221



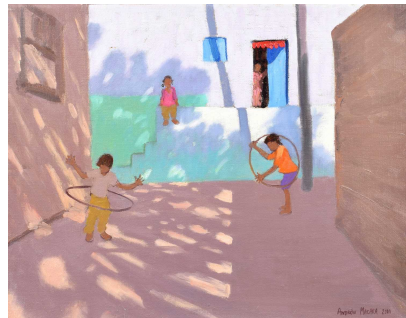
AMI ROBB (BRITISH 21ST CENTURY) "KIRKUDBRIGHT 1" Signed and titled on verso, acrylic on canvas.
(Dimensions: 39.5 x 49.5cm (framed 56 x 66cm)) **£100-200**

222



§ ANDREW MACARA (BRITISH 1944-) SCHOOL CLASSROOM WITH CHILDREN Signed and dated 1985, oil on canvas.
(Dimensions: 77 x 150.5cm)
Artists' Resale Right ("droit de suite") may apply to this lot. £400-600

223



Modern Art & Design, 30th May, 2024 11:00

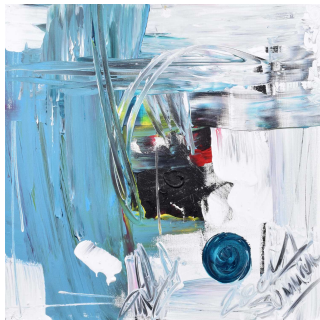
§ ANDREW MACARA (BRITISH 1944-)
"PLAYING HOOPS, INDIA" Signed and dated
 2000, oil on canvas.
 (Dimensions: 35.5 x 45.5cm)
**Artists' Resale Right ("droit de suite") may apply
 to this lot. £200-400**

224



§ HAROLD GASTER (BRITISH 1906-1986)
"WINTER LANDSCAPE" Signed, titled on verso,
 oil on canvas.
 (Dimensions: 34.5 x 44.5cm (framed 52.5 x
 62.5cm))
**Artists' Resale Right ("droit de suite") may apply
 to this lot. £200-400**

225



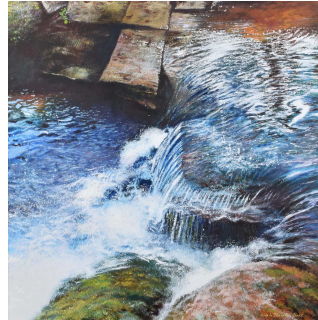
**§ MARTYN DEMPSEY (BRITISH 20TH/21ST
 CENTURY) ABSTRACT** Signed and dated
 2001, acrylic on canvas.
 (Dimensions: 50 x 50cm)
**Artists' Resale Right ("droit de suite") may apply
 to this lot. £80-120**

226



**§ LHOUETTE (BRITISH 1985-) "WALT DISNEY
 - COLOUR CRATE"** Signed, titled and with
 original stamp of authenticity on verso, mixed
 media on board.
 (Dimensions: 38 x 38cm (framed 54 x 54cm))
**Artists' Resale Right ("droit de suite") may apply
 to this lot. £200-400**

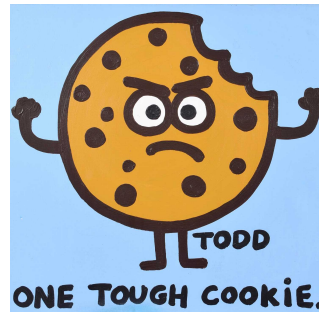
227



**§ CRISPIN THORNTON JONES (BRITISH
 20TH/21ST CENTURY) "BRIGHT WATER"**
 Signed and dated '05, titled on a note from the
 artist attached verso, oil on canvas.
 (Dimensions: 87.5 x 87.5cm (framed 111 x
 111cm))

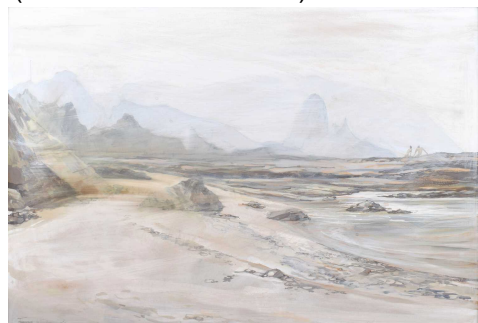
**Artists' Resale Right ("droit de suite") may apply
 to this lot. £100-200**

228



**TODD GOLDMAN (AMERICAN 20TH/21ST
 CENTURY) "ONE TOUGH COOKIE"** Signed,
 titled on verso, acrylic on canvas.
 (Dimensions: 61 x 61cm) **£80-120**

229



Modern Art & Design, 30th May, 2024 11:00

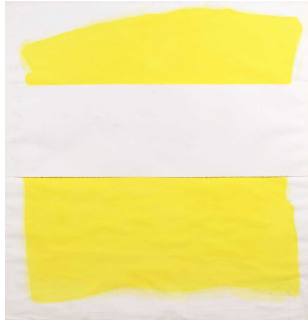
§ FRANCES WINDER (BRITISH 20TH/21ST CENTURY) BEACH SCENE WITH FIGURES

Signed, gouache.

(Dimensions: 53 x 78.5cm (framed 62 x 87.5cm))

Artists' Resale Right ("droit de suite") may apply to this lot. £80-120

230



§ SANDRA BLOW (BRITISH 1925-2006)

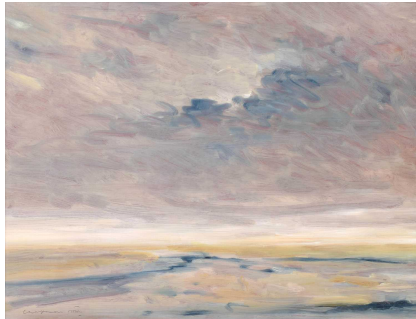
ABSTRACT Signed and dated '93, acrylic and collage on paper.

(Dimensions: 125.5 x 120.5cm (framed 130 x 125cm))

From the Estate of the Artist.

Artists' Resale Right ("droit de suite") may apply to this lot. £1,000-1,500

231



§ MICHAEL CHAPMAN (BRITISH 1933-)

"GREY DAY AT HOLKHAM BEACH WITH DARK WATER" Signed and dated MMVIII, titled on verso, oil on board.

(Dimensions: 45 x 60cm (framed 63.5 x 77.5cm))

Artists' Resale Right ("droit de suite") may apply to this lot. £150-250

232



§ ANDREW KING (BRITISH 1956-) "MORNING LIGHT, SENNAN" Signed, titled and dated 2012 on artist's label verso, oil on board.

(Dimensions: 28 x 35cm (framed 41 x 47.5cm))

Artists' Resale Right ("droit de suite") may apply to this lot. £150-250

233



§ PADRAIG MACMIADHACHAIN (IRISH 1929-2017) "THE WIND AMONG THE TALL ONES"

Signed and dated '61, titled and inscribed 'Krakow, Poland' on verso, oil on canvas.

(Dimensions: 60.5 x 91cm (71.5 x 102cm))

Artists' Resale Right ("droit de suite") may apply to this lot. £500-700

234



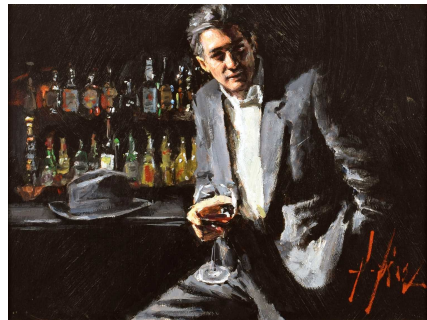
§ DANNY CAWLEY (BRITISH 1976-)

"WESTBOUND NO. 3" Signed, titled and dated 2007 on verso, acrylic on canvas.

(Dimensions: 101.5 x 76.5cm)

Artists' Resale Right ("droit de suite") may apply to this lot. £50-100

235



Modern Art & Design, 30th May, 2024 11:00

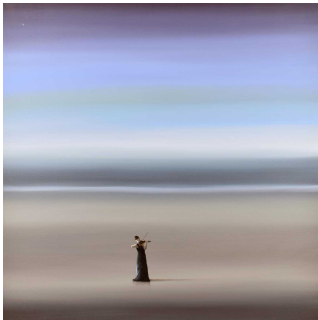
FABIAN PEREZ (ARGENTINIAN 1967-)
"BLACK SUIT AND RED WINE" Signed, titled
 on verso, oil on canvas.
 (Dimensions: 29 x 39.5cm (framed 64 x
 74.5cm))
 DeMontfort Fine Art. **£4,000-6,000**

236



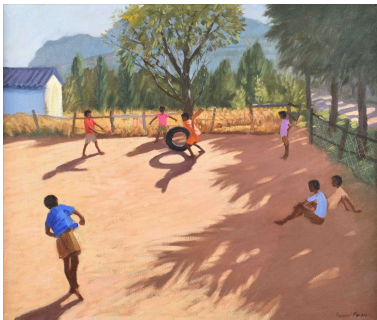
FABIAN PEREZ (ARGENTINIAN 1967-) **"SABA
 AT LAS BRUJAS"** Signed, titled on verso, oil on
 canvas.
 (Dimensions: 21.5 x 29.5cm (framed 57 x
 64.5cm))
 DeMontfort Fine Art. **£3,000-5,000**

237



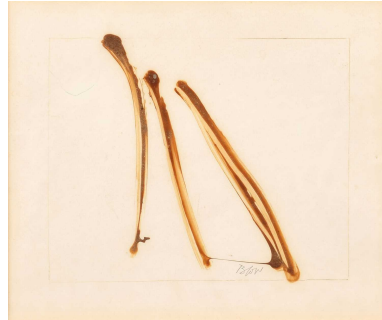
§ STEVE JOHNSTON (BRITISH 1956-)
"WOMAN PLAYING VIOLIN" Signed and dated
 2004 on verso, titled on artist's label, oil and
 acrylic on canvas.
 (Dimensions: 100 x 100cm)
**Artists' Resale Right ("droit de suite") may apply
 to this lot. £200-400**

238



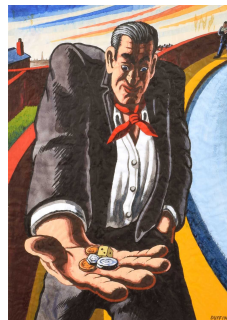
§ ANDREW MACARA (BRITISH 1944-)
"CRICKET - SOUTH AFRICA" Signed, titled on
 verso, oil on canvas.
 (Dimensions: 62 x 74.5cm (framed 86.5 x
 99.5cm))
**Artists' Resale Right ("droit de suite") may apply
 to this lot. £600-800**

239



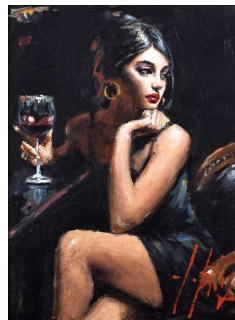
§ SANDRA BLOW (BRITISH 1925-2006)
UNTITLED Signed, mixed media.
 (Dimensions: 17.5 x 21cm (framed 33.5 x
 35.5cm))
 Stephen Lacey Gallery
**Artists' Resale Right ("droit de suite") may apply
 to this lot. £200-400**

240



§ JOHN DUFFIN (BRITISH 1965-) **"JUST A
 LUCKY GUY"** Signed, titled and dated 1997 on
 certificate of authenticity - 'The Art Supermarket
 at Harvey Nichols' verso, acrylic and
 watercolour.
 (Dimensions: 41 x 29cm (framed 50.5 x 40cm))
**Artists' Resale Right ("droit de suite") may apply
 to this lot. £100-200**

241



Modern Art & Design, 30th May, 2024 11:00

FABIAN PEREZ (ARGENTINIAN 1967-) "SABA WITH A GLASS OF RED WINE" Signed, titled on verso, oil on canvas.
(Dimensions: 39.5 x 29.5cm (framed 74.5 x 64.5cm))
DeMontfort Fine Art. **£4,000-6,000**

242



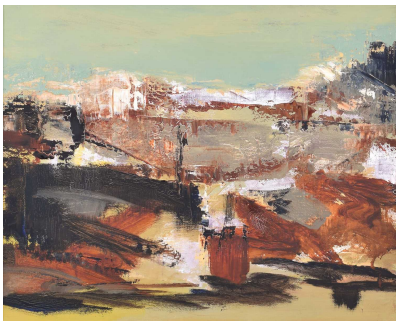
§ ANDREW KING (BRITISH 1956-) "TOWARDS BLYTHBURGH, EVENING LIGHT" Signed, titled and dated 2010 on artist's label verso, oil on board.
(Dimensions: 28.5 x 40cm (framed 43.5 x 55cm))
Artists' Resale Right ("droit de suite") may apply to this lot. £100-200

243



§ RICHARD DACK (BRITISH 1944-) "HERITAGE TRAWLER 'MINCARLO'" Signed, titled on verso, oil on board.
Built in Lowestoft in 1965. This is the last surviving sidewinder trawler.
(Dimensions: 28.5 x 39cm (framed 46.5 x 57cm))
Artists' Resale Right ("droit de suite") may apply to this lot. £100-200

244



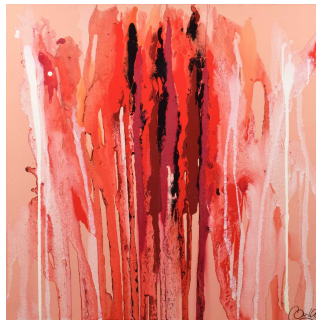
§ AMI ROBB (BRITISH 21ST CENTURY) "KIRKCUDBRIGHT 2" Signed and titled on verso, acrylic on canvas.
(Dimensions: 39.5 x 50cm (framed 56 x 66.5cm))
Artists' Resale Right ("droit de suite") may apply to this lot. £100-200

245



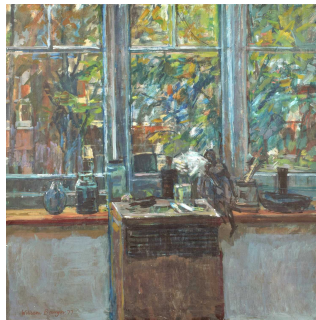
§ ANDREW KING (BRITISH 1956-) "SUNLIT CANAL, CANAREGGIO" Signed, titled and dated 2011 on artist's label verso, oil on board.
(Dimensions: 49 x 28cm (framed 74 x 52.5cm))
Artists' Resale Right ("droit de suite") may apply to this lot. £150-250

246



§ DANNY CAWLEY (BRITISH 1976-) "THE AUTUMN WALK" Signed, titled and dated 2008 on verso, acrylic on canvas.
(Dimensions: 91.5 x 91.5cm)
Artists' Resale Right ("droit de suite") may apply to this lot. £50-100

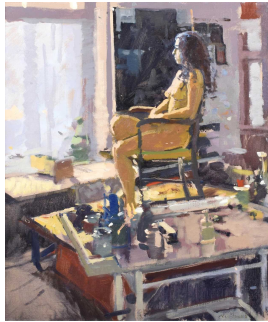
247



Modern Art & Design, 30th May, 2024 11:00

§ WILLIAM BOWYER R.A. (BRITISH 1926-2015) "BY A WINDOW" Signed and dated '77, oil on canvas.
(Dimensions: 60.5 x 61cm)
Artists' Resale Right ("droit de suite") may apply to this lot. £400-600

248



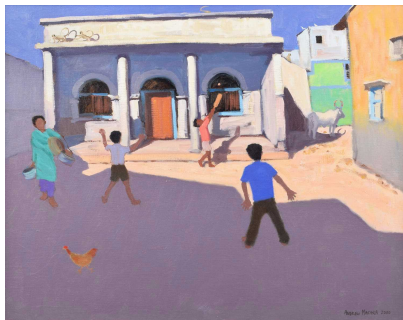
§ KEN HOWARD R.A. (BRITISH 1932-2022) "PAULA AT ORIEL" Signed, titled on verso, oil on canvas.
(Dimensions: 60 x 50cm (framed 81 x 70.5cm))
Artists' Resale Right ("droit de suite") may apply to this lot. £1,500-2,000

249



§ GARY BUNT (BRITISH 1957-) "CELL BLOCK H" Signed, titled and dated 2002 with the artist's handwritten poem on verso - "I hate this bloody weather, I hate the bloody rain, Stuck in here Cell Block H, With the govenor [*sic*] ranting again", oil on canvas.
(Dimensions: 49.5 x 39.5cm (framed 76 x 65.5cm))
Artists' Resale Right ("droit de suite") may apply to this lot. £5,000-7,000

250



§ ANDREW MACARA (BRITISH 1944-) STREET SCENE WITH CHILDREN PLAYING CRICKET Signed and dated 2000, oil on canvas.
(Dimensions: 49 x 62cm (framed 63.5 x 86.5cm))
Artists' Resale Right ("droit de suite") may apply to this lot. £300-500

251



§ PAUL CRITCHLEY (BRITISH 1960-) "EL PUEBLO EN LAS MONTAÑAS" 1995, signed, titled on verso, oil on board, together with a copy of *Paul Critchley*, published by Sammer in which this painting is illustrated (2).
(Dimensions: 180 x 70 x 6.5cm)
* This painting is illustrated on page 83 of *Paul Critchley*, published by Sammer.
Artists' Resale Right ("droit de suite") may apply to this lot. £200-400

252



§ ANDREW KING (BRITISH 1956-) "WHITE SAILS AND CLOUDS, THE ORWELL" Signed, titled and dated 2009 on artist's label verso, oil on board.
(Dimensions: 23.5 x 34cm (framed 37.5 x 48cm))
Artists' Resale Right ("droit de suite") may apply to this lot. £100-200

Modern Art & Design, 30th May, 2024 11:00

253



§ TIMMY MALLET (BRITISH 1955-)
"JACARADA AVENUE" Signed, titled on label
verso, oil on board.
(Dimensions: 24 x 30cm (framed 30 x 36cm))
**Artists' Resale Right ("droit de suite") may apply
to this lot. £100-200**

254



**§ BRIAN STONES (BRITISH 1940-2019) SET
OF SEVEN OP-ART STUDIES** Unsigned,
acrylic on board.
(Dimensions: Each 20.5 x 20.5cm)
Brian Stones trained at Manchester College of
Art and Design and was part of the renowned
and influential Geigy design group working
alongside Karl Gerstner and Victor Vasarely. He
was employed for more than 30 years in the
company as an artistic director; examples of his
work are at the Zurich Design Museum,
exhibited at the 2009 "Great Design Great
Business" show and in the book "Corporate
Diversity Geigy 1940-1970" (source Naomi,
daughter of the artist). **£60-100**

255



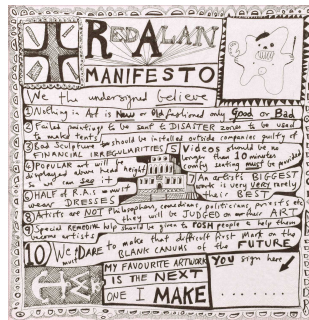
§ TERRY FROST R.A. (BRITISH 1915-2003)
"CURVES" Signed and dated 75/6 on verso,
watercolour and gouache on paper.
(Dimensions: 74 x 52cm (framed 117.5 x
95.5cm))
Sotheby's, 20th Century British And Irish Art,
London, UK, 16 February 2006, Lot 186.
**Artists' Resale Right ("droit de suite") may apply
to this lot. £800-1,200**

256



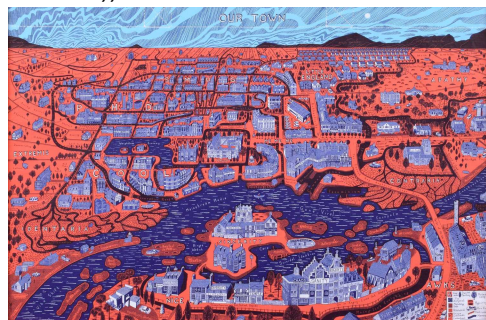
§ DAVID SHRIGLEY (BRITISH 1968-) "I LOVED
YOU FROM THE FIRST MOMENT I SAW YOU"
2020, from a collaboration with London-based
spectacle maker Cubitts to create a glasses
cloth, the cloth was sold to raise money for
Guide Dogs for the Blind Association, textile
made from recycled plastic.
(Dimensions: 21.5 x 13cm (framed 35 x 26cm))
£100-200

257



**§ SIR GRAYSON PERRY O.B.E., R.A.
(BRITISH 1960-)** "RED ALAN MANIFESTO"
Printed on a paper napkin.
(Dimensions: 32.5 x 32.5cm (framed 36.5 x
36.5cm)) **£80-120**

258



Modern Art & Design, 30th May, 2024 11:00

SIR GRAYSON PERRY O.B.E., R.A. (BRITISH 1960-) "OUR TOWN" Printed on polypropylene. In *Our Town*, Grayson Perry displays an imaginary place, where life is lived like in social media; where reactions, judgements and emotions are exposed in everyday life. (Dimensions: 39 x 58.5cm (framed 44 x 63.5cm)) **£100-200**

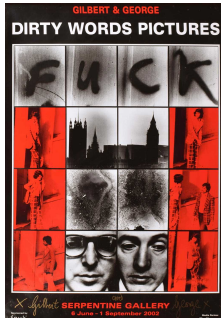
261



§ RICHARD HAMILTON (BRITISH 1922-2011) "POETRY AND POLITICS" Signed, titled and dated '79 in pencil, artist's proof, lithograph. (Dimensions: 50 x 42cm (framed 75.5 x 64.5cm))

Artists' Resale Right ("droit de suite") may apply to this lot. £300-500

259

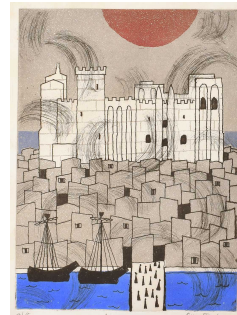


§ GILBERT AND GEORGE (BRITISH 1942/1943-) "THE DIRTY WORDS PICTURES" EXHIBITION POSTER Signed by both Gilbert and George, offset lithograph on paper, designed for the exhibition at Serpentine Gallery 6 June - 1 September 2002, printed by Kunstmuseum Wolfsburg.

(Dimensions: 98 x 68cm (framed 109 x 79cm))

Artists' Resale Right ("droit de suite") may apply to this lot. £300-500

262



§ JULIAN TREVELYAN (BRITISH 1910-1988) "AVIGNON" Signed, titled and numbered 9/65 in pencil in the margin, etching with aquatint. (Dimensions: 50.5 x 37.5cm (framed 80.5 x 60.5cm))

Artists' Resale Right ("droit de suite") may apply to this lot. £400-600

260



§ ANTHONY FROST (BRITISH 1951-) "BLUE NOTES" Signed and dated '97, numbered 19/50, screenprint.

(Dimensions: sheet size 25.5 x 25.5cm (framed 42 x 42cm))

Artists' Resale Right ("droit de suite") may apply to this lot. £100-200

263



Modern Art & Design, 30th May, 2024 11:00

§ PETER SMITH (BRITISH 1967-) "MIRROR, MIRROR ON THE WALL, WHO'S THE FAIREST OF THEM ALL" Signed and numbered 52/150, published Autumn 2015 by Washington Green Fine Art, with numbered certificate of authenticity attached to verso, giclee print on board.

(Dimensions: 60 x 36.5cm (framed 80 x 57cm))

Artists' Resale Right ("droit de suite") may apply to this lot. £100-200

266



§ MR BRAINWASH (FRENCH 1966-) "I'LL BE THERE FOR YOU (FRIENDS FOREVER)" 2021, signed and numbered 23/94 in pencil in the margins, with certificate of authenticity on verso, screenprint on archival paper.

(Dimensions: 56.5 x 57cm (framed 74.5 x 74.5cm))

Artists' Resale Right ("droit de suite") may apply to this lot. £300-500

264

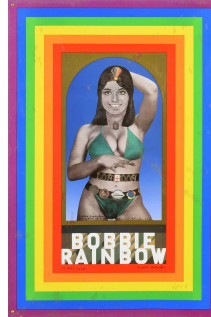


§ MR BRAINWASH (FRENCH 1966-) "STAIRWAY TO LONDON (LED ZEPPELIN)" 2009, signed in pencil in the margin and numbered 79/100, screenprint on archival paper.

(Dimensions: 57.5 x 77cm (framed 72 x 91cm))

Artists' Resale Right ("droit de suite") may apply to this lot. £500-700

267



§ PETER BLAKE C.B.E., R.D.I., R.A. (BRITISH 1932-) "BOBBIE RAINBOW" 2001, signed and numbered 1099/2000 in pen, from the edition of 2000, lithograph on tin, together with a signed copy of *Peter Blake*, The Tate Gallery exhibition book, published for the exhibition of 9 February - 20 March 1983 (2).

(Dimensions: 66 x 44cm (framed 79.5 x 54.5cm)) **£400-600**

265



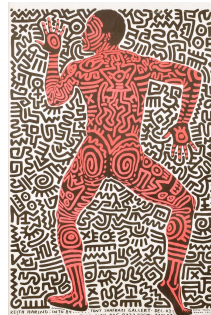
§ TREVOR PRICE (BRITISH 1966-) "SEA DANCE II" Signed and numbered 1/1 in pencil in the margin, monoprint.

(Dimensions: sheet size 49 x 67.5cm (framed 69 x 85.5cm))

The Biscuit Factory, Newcastle-upon-Tyne, 2018.

Artists' Resale Right ("droit de suite") may apply to this lot. £100-200

268

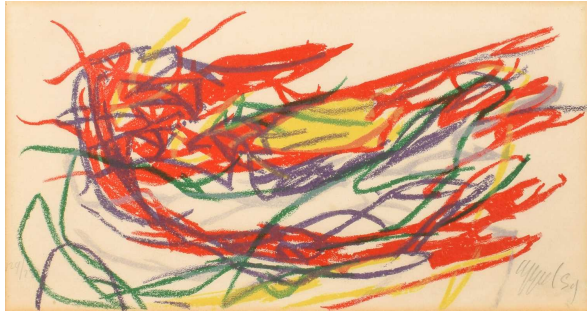


Modern Art & Design, 30th May, 2024 11:00

AFTER KEITH HARING (AMERICAN 1958-1990) "KEITH HARING: INTO 84" EXHIBITION
POSTER Offset lithograph on paper, designed for his solo exhibition at the Tony Shafrazi Gallery 3rd December 1983 - 7th January 1984, featuring choreographer and dancer Bill T. Jones.

(Dimensions: 88 x 58.5cm (framed 94.5 x 63.5cm)) **£200-400**

269



§ KAREL APPEL (DUTCH 1921-2006)
ABSTRACT Signed in pencil and numbered 129/280, inscribed verso 'Voor Fanny van Karel', Amsterdam 1959, colour lithograph.
(Dimensions: 21.5 x 40.5cm (framed 37 x 54.5cm))
Originally gifted by the artist
Artists' Resale Right ("droit de suite") may apply to this lot. £300-500