

Fine Jewellery, Watches & Designer, 28th Nov, 2024 11:00

1



A DIAMOND STAR BROOCH. Set with vari cut diamonds, estimated total diamond weight 3.25cts, length 3.4cm, gross weight 6.4g. **£1,200-2,200**

4



A 9CT GOLD SPLIT PEARL AND DIAMOND BROOCH. Designed as a split pearl crescent and swallow with brilliant cut diamond accent, hallmarks for London, length 2.3cm, gross weight 4.4g. **£60-120**

2



A SILVER GEORG JENSEN BROOCH, NO. 256. Designed by Arno Malinowski, featuring a deer in fronds, maker's marks, stamped 925D Denmark, import marks for London, 1996, length 4.6cm, gross weight 14.9g. **£80-120**

5



A DIAMOND BROOCH. The openwork foliate rose cut diamond drop suspended from a similarly set diamond bar brooch, length 3.4cm, gross weight 7.6g. **£150-250**

3



A GEM-SET BUG BROOCH. With lapis lazuli oval cabochon and split pearl abdomen, ruby head, and rose cut diamond eyes and wings, with detachable brooch fitting, length 4.2cm, gross weight 8.8g. **£200-400**

6



AN EARLY 20TH CENTURY CORAL CAMEO BROOCH. The oval coral cameo depicting a classical bust, within a split pearl openwork surround, stamped 9ct, length 3.4cm, gross weight 10.2g. **£70-90**

Fine Jewellery, Watches & Designer, 28th Nov, 2024 11:00

7



A WWII 'CATERPILLAR CLUB' PIN. Of typical design, awarded to Warrant Officer Morris David Smith, inscribed W/O. M. D. Smith to reverse, length 2cm, gross weight 0.9g. With original presentation box, certificate of membership, and letter dated 24th September 1945 from Leslie L. Irvin, Honorary Secretary of the European Branch, Irving Air Chute.

The Caterpillar Club pin was an unofficial award, founded in 1922, and was presented to Royal Air Force personnel who had 'bailed out' successfully wearing an Irvin parachute made by the Irvin Air Chute Company, the recipient's name was engraved on the reverse.

Morris David Smith was a Warrant Officer, serving in the RNZAF and later 43 Squadron RAF from 1941 onwards. On November 13th 1943, his aircraft, a Spitfire V no. B721 was shot down by an 88mm Flak during a sweep over Frosinone, Italy. He was forced to bail out of the aircraft, sustaining burns to his face and hands from the fall. He was treated for his burns in Italy, and was subsequently captured, ending up in the Stalag Luft IV prisoner-of-war camp. He was part of the forced 86 day 'Death March' from 6th February 1945, marching 600 miles to Fallingbomel (Stalag Luft XIB). Morris David Smith is mentioned in Spitfires Over Sicily by Brian Cull (p 110) and Night Hawk by Roger Darlington (p 91, 98-99). £1,000-2,000

8



A SILVER GEORG JENSEN BROOCH, NO. A107. Of curved and tapered openwork design, maker's marks for Georg Jensen, stamped 925S Denmark, length 7.2cm, gross weight 46g. With maker's box. **£150-250**

9



A SILVER ENAMEL BROOCH BY AXEL HOLMSEN. Together with a silver enamel ring, both bearing maker's mark, stamped 925S, length of brooch 6.7cm, ring size J, gross weight 13.9g. **£50-100**

10



A GEORG JENSEN BROOCH, NO. 250. The square frame with a wheat sheaf diagonally and a bird in each corner, maker's marks, import marks for London, length 3.9cm, gross weight 19.4g. **£150-250**

11



AN EARLY 20TH CENTURY PERIDOT RUBY AND SPLIT PEARL BROOCH. The circular shape peridot collet within an openwork ruby and split pearl scalloped surround, length 2.6cm, gross weight 4.1g. **£100-200**

Fine Jewellery, Watches & Designer, 28th Nov, 2024 11:00

12



AN EARLY 20TH CENTURY ENAMEL AND MOONSTONE BROOCH BY CHILD & CHILD. The blue and green enamel pair of wings suspending an oval moonstone cabochon drop, unmarked, length 3.5cm, gross weight 6.9g. In a fitted Child & Child case, monogrammed and dated V.A. 1907. **£600-800**

15



A SILVER LAPPONIA 'LABYRINTH' BROOCH. Designed by Björn Weckström, designed as a landscape with a figure within, signed, Swedish assay marks, date letters M8, length 4.8cm, gross weight 21.9g. **£120-220**

13



A GEORG JENSEN 'MASTER BROOCH,' NO. 96. Of foliate design in sterling silver, set with amazonite cabochons and suspending drops, fitted with hinged pin stem and a trombone clasp, No. 96, maker's mark 1933-44, Danish import marks, stamped 925S and 96, length 9.6cm, gross weight 59.1g. *Pictured in Georg Jensen: A Tradition of Splendid Silver, by Janet Drucker, p. 95. Drucker explains that Brooch no. 96 is "referred to as a 'master brooch' ...because it is larger than most other brooches and probably took more time to complete."* **£2,500-4,500**

16



A VICTORIAN PORTRAIT MINIATURE BROOCH. The oval painted porcelain miniature, possibly depicting Queen Louise of Prussia, within a claw setting, stamped 9ct, length 4.7cm, gross weight 13.8g. **£100-200**

17

14



Fine Jewellery, Watches & Designer, 28th Nov, 2024 11:00

AN 18CT GOLD EMERALD AND DIAMOND FLORAL BROOCH. Of textured and foliate design, set with circular shape emeralds and single cut diamonds, sponsor's marks for Douglas John Ewing, import marks for Edinburgh, length 6.4cm, gross weight 12.5g. **£450-650**

18



A GEORG JENSEN 'DOVE' BROOCH, NO. 320. Designed by Arno Malinowski for Georg Jensen, maker's marks, stamped 925S, length 4.4cm, gross weight 12.9g. **£100-200**

19



A 9CT GOLD GARRARD ROYAL ENGINEERS BROOCH. The Royal Engineers Grenade collar badge with blue enamel detailing, maker's marks for Garrard, hallmarks for Birmingham, 1990, length 3.3cm, gross weight 5.2g. With maker's case. **£80-120**

20



TWO LEA STEIN 'COROLLE' LADY BROOCHES. Each signed, lengths 5.4 to 5.5cm (2). **£60-120**

21



A SELECTION OF 9 AND 15CT GOLD BROOCHES AND STICK PINS. To include a diamond scarf clip, seven bar brooches, a stickpin, and a paste and diamond Etruscan brooch, four with hallmarks for 9ct gold, one stamped 15, four stamped 9ct, lengths 2.9 to 5.8cm, gross weight 29.1g. **£400-500**

22



A HINGED BANGLE. Of cushion outline, stamped 9k, inner diameter 6.3cm, gross weight 10.3g. **£150-250**

23



A 9CT GOLD BRACELET. Suspending a vari gem set floral pendant, length 18.5cm, gross weight 11.8g. **£150-250**

24



Fine Jewellery, Watches & Designer, 28th Nov, 2024 11:00

AN EARLY 20TH CENTURY AMETHYST AND SPLIT PEARL HINGED BANGLE. The oval shape amethyst within a scrolling split pearl surround, to the polished hinged reverse, inner diameter 5.9cm, gross weight 9.2g. **£250-450**

25



AN EARLY 20TH CENTURY HINGED BANGLE. With knotted motif and fixed curb link chain sides, stamped 15, inner diameter 5.8cm, gross weight 16.4g. **£300-500**

26



A 9CT GOLD RUBY AND DIAMOND HINGED BANGLE. The square shape ruby line within a brilliant cut diamond border, sponsor's marks HJM, hallmarks for Sheffield, inner diameter 6.1cm, gross weight 12.4g. **£300-500**

27



A VICTORIAN OPAL AND DIAMOND HINGED BANGLE. The graduated oval opal cabochon line with rose cut diamond spacers, inner diameter 6.1cm, gross weight 16.1g. **£500-800**

28



AN EARLY 20TH CENTURY LAPIS LAZULI AND DIAMOND PANEL BRACELET. Comprising five square shape lapis lazuli links with brilliant cut diamond pierced foliate panel spacers and push piece clasp, stamped 14KD and Plat. Top, length 18cm, gross weight 24.3g. **£400-600**

29



A SAPPHIRE AND DIAMOND LINE BRACELET. The oval shape sapphire line with brilliant cut diamond duo spacers, length 18cm, gross weight 10.9g. **£400-600**

30



A 9CT GOLD DIAMOND ID BRACELET. Of bi-colour design, with a star-set diamond vacant ID panel, flat curb link chain sides and a lobster clasp, length 19.1cm, gross weight 6g. **£80-120**

Fine Jewellery, Watches & Designer, 28th Nov, 2024 11:00

31



A 9CT GOLD SOVEREIGN BRACELET. Set with five Isle of Man sovereigns dated 1973, with textured cross link settings and push piece clasp, standard marks for 9ct gold, maker's marks OS GAM, length 19.2cm, gross weight 73.8g. With Boodle & Dunthorne case. **£2,500-4,500**

32



AN 18CT GOLD DIAMOND BRACELET BY THEO FENNEL. Designed as a trace link chain with alternating diamond-set and polished links, terminating with a spring clasp, maker's marks for Theo Fennell, hallmarks for London, 2007, length 19.8cm, gross weight 18g. **£2,000-4,000**

33



AN EARLY 20TH CENTURY FRESHWATER PEARL BRACELET. Comprising five freshwater pearls in cage settings, with fancy link chain spacers and a spring clasp, stamped 15ct, Rd. No 402310, length 22.5cm, gross weight 18.3g. **£500-700**

34



A GEORG JENSEN SILVER 'VICTORY' BANGLE, NO. 423. Designed by Ragner R. Jørgensen for Georg Jensen, maker's marks, Danish assay marks, inner diameter 7.2cm, gross weight 42.6g. **£150-250**

35



A CHARM BRACELET. The fancy link chain with lobster clasp and T-bar attachment, suspending seven charms to include a Victorian sovereign, a penguin, and a citrine spinner fob, length 19cm, gross weight 34.4g. **£700-900**

36



A CHARM BRACELET. The fancy link chain with a spring clasp, suspending eleven charms to include a Victorian sovereign, a hummingbird, a cocktail shaker, a daschund and a heart shaped hinged locket, length 19.5cm, gross weight 44.1g. **£800-1,200**

Fine Jewellery, Watches & Designer, 28th Nov, 2024 11:00

37



A 9CT GOLD CHARM BRACELET. The flat curb link chain suspending six charms, to include a Venezuelan map, Connemara marble shamrock and befeater, length 16cm, gross weight 71.4g. In a Boodle & Dunthorne case. **£1,400-2,400**

38



A SUITE OF 9CT GOLD JEWELLERY BY UNOAERRE. Of bi-colour design, to include a necklace with tassel drop and a double chain bracelet, Italian marks, maker's marks for UnoAERre, length of necklace 47cm, length of bracelet 18.9cm, gross weight 42.1g. **£600-800**

39



A ROMAN HOOP EARRING. Length 1.5cm, gross weight 1.5g. **£70-90**

40



A PAIR OF 18CT GOLD EARRINGS. Each designed as a polished trefoil, import marks for Sheffield, length 2.2cm, gross weight 9.2g. **£150-250**

41



A PAIR OF 9CT GOLD OPAL DROP EARRINGS. Each designed as an oval opal cabochon within a scalloped surround, hallmarks for London, length 2.7cm, gross weight 2.7g. **£70-90**

42



A PAIR OF VARI-GEM DROP EARRINGS. Each designed as a heart shape blue topaz within a vari shape sapphire and single cut diamond surround, suspended from a similarly cut diamond bow surmount, length 2.7cm, AF, gross weight 6.1g. **£200-400**

43



A PAIR OF 18CT GOLD EARRINGS. Of pear outline, with grooved and matte detailing, import marks for Sheffield, length 2.5cm, gross weight 9.5g. **£150-250**

Fine Jewellery, Watches & Designer, 28th Nov, 2024 11:00

44



A PAIR OF ART DECO BLACK OPAL AND DIAMOND DROP EARRINGS. Each designed as an oval opal cabochon suspended from a rose cut diamond drop, and vari-cut diamond fan surmounts, length 3.7cm, gross weight 3.1g. **£700-900**

47



A SELECTION OF JADE JEWELLERY. To include a jade dress ring stamped 9k, and a jade pair of earrings with detachable drops, ring size M1/2, length of earrings 5.5cm, gross weight 10.8g. *Jade untested.* **£80-120**

45



A PAIR OF CULTURED PEARL AND DIAMOND EARRINGS. Each designed as a cultured pearl and single cut diamond cluster, stamped 14K, length 3.4cm, gross weight 13.1g. **£100-200**

48



TWO PAIRS OF AMETHYST DROP EARRINGS. To include a pair of amethyst and split pearl earrings, together with one other pair, lengths 3.3 and 4.2cm, gross weight 12.2g. **£150-250**

46



A PAIR OF CULTURED PEARL AND DIAMOND DROP EARRINGS. Each designed as a cultured pearl duo, with single cut diamond spacers, length 3.2cm, gross weight 5.8g. **£350-550**

49



TWO PAIRS OF GEM-SET DROP EARRINGS. To include a pair of lapis lazuli drops together with a pair of blue topaz and synthetic sapphire drop earrings, lengths 2.8 to 4.3cm, gross weight 11.7g. **£200-400**

Fine Jewellery, Watches & Designer, 28th Nov, 2024 11:00

50



A SUITE OF EMERALD JEWELLERY.

Comprising a single stone pendant stamped 18k suspended from an 18ct gold box link chain bearing Italian assay marks, together with a pair of accompanying stud earrings, stamped 18ct, length of pendant 1.7cm, length of chain 49cm, length of studs 0.5cm, gross weight 5.6g. **£250-450**

51



A 9CT GOLD DRESS STUD BY S J ROSE & SON. Fishing interest, with mother of pearl backing and fly detailing, hallmarks for Birmingham, 1967, length 1.4cm, gross weight 1.6g. **£220-320**

52



A 9CT GOLD AMETHYST 'HEDGEHOG' PENDANT BY DEAKIN & FRANCIS. The amethyst carving suspended from a trace link chain stamped 9c, length of pendant 2.5cm, length of chain 56cm, gross weight 6g. With Boodle & Dunthorne box. **£200-400**

53



AN EARLY 20TH CENTURY NOVELTY CHARM/PENDANT. Designed as a chicken within an egg, length 2.5cm, gross weight 2.3g. **£40-60**

54



AN ANTIQUE CORAL PENDANT. The floral pendant suspending a coral drop, unmarked, length 5.3cm, gross weight 3.1g. **£350-450**

55



A VARI-HUE SAPPHIRE PENDANT. The square shape sapphire line graduating in colour in a rainbow scheme, with polished bar spacers, suspended from an 18ct gold flat curb link chain, pendant with maker's marks RBSJ, stamped 18k and 0.91 (ct), chain with Italian assay marks, length of pendant 1.9cm, length of chain 39cm, gross weight 5.8g. **£200-400**

Fine Jewellery, Watches & Designer, 28th Nov, 2024 11:00

56



A 9CT GOLD ST CHRISTOPHER MEDALLION BY P. VINCZE. Together with two chains (both AF) medallion signed, with hallmarks for London, 1965, gross weight 12.9g. **£150-250**

59



A LALIQUE 'RED HEART' PENDANT. Signed, length 3.8cm. **£60-120**

57



AN 18CT GOLD RUBY AND DIAMOND PENDANT. Of bi-colour design, the circular shape ruby within a brilliant and baguette cut diamond surround, suspended from a 9ct gold fancy link chain, length of pendant 2cm, length of chain 55cm, gross weight 8g. **£200-400**

60



AN 18CT GOLD DIAMOND 'LOVESTRUCK' LARIAT NECKLACE BY LINKS OF LONDON. Designed with three vari-length chains, each suspending a planished or pave set diamond heart, terminated and fastened with a clip fitting, maker's marks for Links of London, hallmarks for London, total length 49cm, gross weight 14.6g. With maker's box. **£300-400**

58



A DIAMOND HEART PENDANT. The pear cut diamond within a brilliant cut diamond openwork heart shape surround, suspended from a tapered surmount, estimated total diamond weight 0.70ct, marks to surmount, length 2.7cm, gross weight 3.4g. **£400-600**

61



AN 14CT GOLD OPAL TRIPLET PENDANT. The freeform opal triplet within a rubover setting and grooved surmount, hallmarks for Birmingham, length 2.7cm, gross weight 5.8g. **£100-200**

Fine Jewellery, Watches & Designer, 28th Nov, 2024 11:00

62



A PALOMA PICASSO FOR TIFFANY & CO. 'GRAFFITI X' DIAMOND PENDANT. The stylised cross with brilliant cut diamond accents, suspended from an integral trace link chain, signed Paloma Picasso, stamped T&Co and 750, chain with French assay marks, length 40cm, gross weight 2.8g. In maker's box. **£400-600**

65



AN 18CT GOLD DIAMOND 'AMPOULE' NECKLACE BY THEO FENNEL. Designed as a pave-set diamond ampoule, encased within textured wings, and brilliant cut diamond stopper, suspended from an integral trace link chain, signed, maker's marks for Theo Fennell, hallmarks for London, 2007, length of necklace 48cm, length of drop 6.5cm, gross weight 39.7g. **£2,500-4,500**

63



A DIAMOND PENDANT. A diamond pendant, designed as a heart shaped padlock, set with brilliant cut diamonds, signed European Jewellery, length 3.7cm, gross weight 12.7g. **£750-950**

66



A SYNTHETIC RED SPINEL AND SPLIT PEARL PENDANT. Of openwork design, the hexagonal synthetic red spinel within a split pearl surround, suspended from a similarly set tapered surmount, length 5cm, gross weight 7.2g. **£150-250**

64



AN EARLY 20TH CENTURY ART NOUVEAU PENDANT. The oval opal cabochon within an openwork sinuous surround, suspending an oval shape garnet drop, stamped 9ct, length 4.5cm, gross weight 2.4g. **£50-100**

67



AN EARLY 20TH CENTURY DIAMOND PENDANT. Of openwork design, the vari cut diamond quatrefoil within a circular surround, suspended from a later fancy link chain, stamped 585, length of pendant 3.2cm, length of chain 44cm, gross weight 5.6g, **£150-250**

Fine Jewellery, Watches & Designer, 28th Nov, 2024 11:00

68



AN EMERALD AND DIAMOND PENDANT. The calibre cut emerald cluster within a brilliant cut diamond surround and surmount, stamped 750, suspended from a 14ct gold snake link chain, length of pendant 2.2cm, length of chain 47cm, gross weight 7.2g. **£400-600**

71



A 9CT GOLD GEM-SET FLORAL NECKLACE BY CROPP & FARR. Of bi-colour design, the floral spray set with circular shape sapphires and seed pearls, suspended from a rope link chain, maker's marks for Cropp & Farr, hallmarks for London, 1989, length of pendant 3.8cm, length of chain 42cm, gross weight 8.6g. **£200-400**

69



AN AQUAMARINE, DIAMOND AND ENAMEL PENDANT, CIRCLE OF ARTHUR & GEORGIE GASKIN. The oval shape aquamarine within a wirework setting adorned with blue enamel leaves, seed pearls and a rose cut diamond and blue enamel flower, unmarked, suspended from a later trace link chain, stamped Sterling and Germany, length of pendant 3.9cm, length of chain 48cm, gross weight 8.1g. **£700-900**

72



AN EMERALD AND DIAMOND PENDANT. The pear shape emerald weighing approx. 1.80cts suspended from a brilliant cut diamond floral cluster and similarly cut diamond tapered surmount, estimated total diamond weight 1ct, suspended from an 18ct gold flat curb link chain, length of pendant 3.3cm, length of chain 45cm, gross weight 9.2g. **£800-1,200**

70



AN EARLY 20TH CENTURY AQUAMARINE AND SPLIT PEARL NECKLACE. Designed as three circular and oval shape aquamarine drops suspended within a split pearl hoop, with later cultured pearl drop and trace link chain sides, stamped 9c, length 46cm, gross weight 3.8g. **£90-140**

73



AN OPAL NECKLACE. The oval opal cabochon drop with openwork bar, suspended from a similarly set opal setting and trace link chain sides, stamped 9 and GERMANY to chain, length 40cm, gross weight 4.4g. **£150-250**

Fine Jewellery, Watches & Designer, 28th Nov, 2024 11:00

74



A DIAMOND NECKLACE BY LARRY. Of bi-colour design, with baguette-cut diamond and brilliant cut diamond cluster, to an integral box link chain, estimated total diamond weight 1.45cts, signed LARRY, stamped 750, length of pendant 2.2cm, length of chain 41cm, gross weight 9.3g. **£700-900**

77



A GEM-SET NECKLACE BY TOUS. Set with faceted and polished gemstones to include tourmaline, quartz, cultured pearl, iolite, etc with wirework settings and a spring clasp, signed Tous, stamped 750, length 40cm, gross weight 10.8g. **£100-200**

75



A JADE NECKLACE. Comprising five floral jade panels within textured settings, and fancy leaf link chain spacers, necklace stamped 14K, replacement clasp stamped 375, length 41.5cm, gross weight 17.7g. *Jade untested.* **£150-250**

78



AN EMERALD AND DIAMOND NECKLACE. The baguette cut diamond and emerald curved and scalloped panel with fancy link chain sides and push piece clasp, length 39cm, gross weight 27g. **£1,500-2,500**

76



A MASONIC BALL PENDANT. Of typical design, maker's marks LJ, length when unfurled 4.8cm, gross weight 7.9g. **£120-220**

79



A SUITE OF MALACHITE JEWELLERY. The necklace with an oval malachite cabochon drop, suspended from a series of textured vari shape links, to the hook clasp, necklace with maker's mark OM or WO, stamped 333, together with a pair of accompanying drop earrings, each stamped 9ct, length of necklace 46cm, length of earrings 3.5cm, gross weight 53.4g. *Purchased from the Goldsmiths Fair.* **£1,000-2,000**

Fine Jewellery, Watches & Designer, 28th Nov, 2024 11:00

80



A 9CT GOLD ALBERT CHAIN. The trace link chain with lobster and spring clasps, suspending a T-bar attachment and a CEMS 'All in one' fob, length 44cm, gross weight 38.9g. **£350-550**

81



A SAPPHIRE AND DIAMOND NECKLACE. The pear shape sapphire and brilliant cut diamond cluster suspended from an integral fancy link chain, estimated total diamond weight 0.75ct, stamped 750, length 43cm, gross weight 20g. **£700-900**

82



A SELECTION OF 1950S SILVER GEORG JENSEN 'TULIP' JEWELLERY. Designed by Harald Nielsen, comprising a no. 66 Tulip necklace with push piece clasp, maker's marks for Georg Jensen, hallmarks for London, 1954, a pair of later fixed post earrings constructed with two tulip links, and a single link with clasp for a no. 93 Tulip bracelet, hallmarks for London, 1955, length of necklace 48.5cm, length of earrings 2.6cm, length of clasp and link 5.5cm, gross weight 105.5g. **£700-900**

83



AN EARLY 20TH CENTURY FRESHWATER PEARL AND TURQUOISE LONGUARD CHAIN. The freshwater pearl and freeform turquoise with cage settings and trace link chain spacers, terminating with a spring clasp, stamped 9c, length 122cm, gross weight 15.3g. **£300-500**

84



A CHAIN NECKLACE. The faceted belcher link chain with a loose spring clasp, unmarked, length 98cm, gross weight 19.7g. **£200-300**

85



A 9CT GOLD CHAIN NECKLACE. The belcher link chain with a spring clasp, marks worn, 375 standard mark to link visible, length 66cm, gross weight 45.6g. **£600-700**

86



Fine Jewellery, Watches & Designer, 28th Nov, 2024 11:00

87

A STRAND OF ANTIQUE ETCHED CARNELIAN BEADS. Possibly Indus Valley, gross weight 16.4g. **£250-450**



88

THREE CULTURED PEARL NECKLACES. To include a cultured pearl and lapis lazuli necklace, an amethyst and cultured pearl necklace suspending a triangular amethyst pendant stamped 750, and one other cultured pearl necklace, clasps stamped 9k, two AF, lengths 42 to 46cm. **£70-90**



89

A CHERRY BAKELITE NECKLACE. The graduated cherry bakelite beads with a screw clasp, length 108cm, gross weight 75.5g. **£350-550**



A CHERRY AMBER BEAD NECKLACE. Designed as a series of graduated cherry amber beads, largest dimensions 29 x 23mm, length 84cm, gross weight 111g. **£600-800**

90



A 1980S SILVER COLLAR NECKLACE. Of textured, open design, EC, London, 1988, gross weight 219g. *Purchased from Liberty & Co in the 1990s.* **£100-200**

91



A SELECTION OF ANTIQUE BEADS. Assorted, gross weight 2.99g. **£100-200**

92



A GEORGIAN GARNET AND SPLIT PEARL DRESS RING. The garnet and split pearl cluster with tapered foliate shoulders, ring size O, gross weight 3.1g. **£50-100**

93



Fine Jewellery, Watches & Designer, 28th Nov, 2024 11:00

94

A RUBY AND DIAMOND CLUSTER RING. The brilliant cut diamond within a circular shape ruby surround, stamped 18ct, ring size K1/2, gross weight 4.4g. **£150-250**



95

AN 18CT GOLD DIAMOND SEVEN STONE RING BY MAPPIN & WEBB. The brilliant cut diamond line with tapered shoulders, total diamond weight 1.15ct, stamped to band, maker's marks for Mappin & Webb, hallmarks for London, 1983, ring size O, gross weight 3.1g. **£300-500**



96

A SYNTHETIC RUBY AND DIAMOND CLUSTER RING. The cushion shape synthetic ruby within a vari-cut diamond surround, ring size N, gross weight 5.8g. **£250-450**



A DIAMOND BAND RING BY BOODLE & DUNTHORNE. Set with seven brilliant cut diamonds in shared claw settings, estimated total diamond weight 1.05ct, estimated colour I-J, estimated clarity SI, maker's marks B&D, stamped 18ct, ring size O, gross weight 4.5g. **£350-550**

97



98

AN 18CT GOLD RUBY AND DIAMOND CLUSTER RING. Designed as a brilliant cut diamond and marquise shape ruby cluster, import marks for Sheffield, ring size N1/2, gross weight 6.8g. **£500-700**



99

AN 18CT GOLD DIAMOND DRESS RING. The marquise cut diamond line in claw settings, stamped 18k, ring size O, gross weight 5.3g. **£300-500**



A SAPPHIRE AND DIAMOND DRESS RING. The rectangular shape pink sapphire weighing approx. 1ct with baguette cut diamond shoulders, estimated total diamond weight 0.15ct, stamped PLAT, ring size N1/2, gross weight 3.5g. **£700-900**

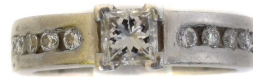
Fine Jewellery, Watches & Designer, 28th Nov, 2024 11:00

100



A 9CT GOLD RUBY AND DIAMOND DRESS RING. The circular shape ruby duo within a brilliant cut diamond 'infinity' surround, sponsor's marks REM, hallmarks for Birmingham, ring size Q, gross weight 3.3g. **£100-200**

103



A PLATINUM DIAMOND DRESS RING. The princess cut diamond weighing approx. 0.35ct with brilliant cut diamond shoulders, estimated colour I-J, estimated clarity SI2-P1, hallmarks for Edinburgh, ring size I, gross weight 7.4g. **£200-400**

101



AN 18CT GOLD DIAMOND BAND RING. The brilliant cut diamond line within a channel setting, estimated total diamond weight 0.35ct, hallmarks for London, ring size L1/2, gross weight 4.6g. **£220-420**

104



A RUBY AND DIAMOND CLUSTER RING. The marquise shape ruby trio within a vari-cut diamond surround, maker's marks GY, stamped 750, ring size M, gross weight 3.5g. **£220-420**

102



A RUBY AND DIAMOND DRESS RING. The single cut diamond and ruby cluster prong set to the polished band, stamped 18k, ring size K1/2, gross weight 7.4g. **£350-550**

105



A DIAMOND THREE STONE RING. The brilliant cut diamond line with tapered shoulders, estimated total diamond weight 1.05cts, estimated colour K-L, estimated clarity SI2-P1, stamped 18ct & Plat, ring size N, gross weight 3.2g. **£300-500**

Fine Jewellery, Watches & Designer, 28th Nov, 2024 11:00

106



AN EARLY 20TH CENTURY 18CT GOLD RUBY AND DIAMOND DRESS RING. The cushion shape ruby line with old cut diamond spacers, hallmarks for Birmingham, 1912, sponsor's marks M.E for Michael Emanuel, ring size N, gross weight 4g. **£300-500**

109



A DIAMOND CLUSTER RING. The brilliant cut diamond within a single cut diamond surround, estimated total diamond weight 0.45ct, stamped 18ct & Plat, ring size N1/2, gross weight 2.9g. **£250-450**

107



A DIAMOND CLUSTER RING. The brilliant cut diamond within a similarly cut diamond surround and shoulders, estimated total diamond weight 0.90ct, stamped 18ct, ring size N, gross weight 2.6g. **£960-1,060**

110



AN OPAL AND RUBY CLUSTER RING. The oval opal cabochon within a circular shape ruby surround, ring size K1/2, gross weight 5.8g. **£120-220**

108



A CORAL DRESS RING. Of floral design, the coral carving within a foliate setting, stamped 14K, ring size P, gross weight 7.2g. **£100-200**

111



A DIAMOND FIVE STONE RING. The old cut diamond line with tapered shoulders, estimated total diamond weight 0.60ct, ring size N1/2, gross weight 2.4g. **£150-250**

112



Fine Jewellery, Watches & Designer, 28th Nov, 2024 11:00

113

A DIAMOND AND GEM-SET DRESS RING. Of floral design, with pear shape garnet, blue topaz, peridot and diamond floral terminals ,stamped 750, ring size K, gross weight 2.7g. **£150-250**



114

A SOUTH EAST ASIAN MAJAPAHIT WIRE WRAPPED RING. Java, 3rd-8th century AD, gross weight 13.6g. **£800-1,200**



115

A SAPPHIRE AND DIAMOND CLUSTER RING. The oval shape yellow sapphire weighing approx. 1ct within a brilliant cut diamond surround and similarly cut diamond shoulders, estimated total diamond weight 0.45ct, stamped PLAT, ring size approx. M, gross weight 3.9g. **£750-950**



116

A DIAMOND SINGLE STONE RING. The Barion cut diamond weighing approx. 0.80ct within a partial rub-over setting, to the textured and polished band, estimated colour J-K, estimated clarity VS, stamped 750, ring size K1/2, gross weight 4.8g.

The 'Barion' cut was developed in the 1970s in South Africa by Basil Watermeyer. The name was formed by merging his own name, with that of his wife Marion's, resulting in 'Barion.' The Barion cut is a mixed cut, featuring triangular and kite shaped facets as a modification or alternative to more standardised cuts - this complex cut was never trademarked and so still used to this day, resulting in a preferable colour and yield from the rough material.

Our vendor was personal acquaintances with both Basil and Marion Watermeyer in the 1970s-80s, and so acquired this stone from them to be set in this wonderful band setting. **£500-700**



117

A SAPPHIRE AND DIAMOND DRESS RING. The oval shape yellow sapphire weighing approx. 1.20ct with baguette cut diamond shoulders, estimated total diamond weight 0.25ct, stamped PLAT, ring size N1/2, gross weight 4.3g. **£650-850**



A LATE 17TH CENTURY POSY RING. Circa 1680-1700, with inscription 'a friend's gift' to interior, maker's marks TS, ring size C1/2, gross weight 1.3g. **£500-800**

Fine Jewellery, Watches & Designer, 28th Nov, 2024 11:00

118



A DIAMOND CLUSTER RING. The brilliant cut diamond within a similarly cut diamond tiered surround, total diamond weight 0.80ct, stamped to band, stamped 18k, ring size J, gross weight 3.2g. **£250-450**

121



A LATE VICTORIAN 15CT GOLD BUCKLE RING. Of typical design, set with turquoise cabochons and split pearls, hallmarks for Henry Hyde & Sons, Birmingham, 1875, ring size L, gross weight 2.1g. **£50-100**

119



AN 18CT GOLD DIAMOND SEVEN STONE RING. The princess cut diamond line with polished shoulders, estimated total diamond weight 0.70ct, import marks for London, ring size N, gross weight 3.1g. **£200-400**

122



A LATE VICTORIAN SPLIT PEARL AND TURQUOISE DRESS RING. The split pearl and turquoise cabochon lines with scrolling shoulders, hallmarks for Birmingham, 1872, ring size M, gross weight 1.2g. **£50-100**

120



A DIAMOND SINGLE STONE RING. The old cut diamond weighing approx. 2.60cts within a ten claw setting, estimated colour L-M, estimated clarity P2, ring size S, gross weight 10.7g. **£2,000-4,000**

123



A PERIDOT AND DIAMOND CLUSTER RING. The oval shape peridot weighing approx. 1.70cts within a brilliant cut diamond surround, estimated total diamond weight 0.50ct, stamped PLAT, ring size N, gross weight 4.7g. **£750-950**

Fine Jewellery, Watches & Designer, 28th Nov, 2024 11:00

124



A JADE DRESS RING. The carved jade panel depicting gourds, ring size Q, gross weight 8g. *Jade untested for treatments.* **£100-200**

127



AN 18CT GOLD EMERALD AND DIAMOND DRESS RING. The emerald cut emerald weighing approx. 2.20cts with baguette cut diamond sides, sponsor's marks EF, hallmarks for London, ring size P, gross weight 4.7g. **£500-700**

125



AN EMERALD AND DIAMOND DRESS RING. The emerald cut emerald weighing approx. 0.90ct with baguette cut diamond shoulders, stamped 750, ring size L, gross weight 3.6g. **£200-400**

128



A 9CT GOLD DIAMOND FIVE STONE RING. The circular cut diamond line with tapered shoulders, estimated total diamond weight 0.85ct, hallmarks for London, ring size L1/2, gross weight 2g. **£120-220**

126



A DIAMOND THREE STONE RING. The brilliant cut diamond line with tapered shoulders, estimated total diamond weight 1.40cts, estimated colour K-L, estimated clarity SI2-P1, stamped PALL, ring size O1/2, gross weight 2.6g. **£350-550**

129



A SAPPHIRE AND DIAMOND CLUSTER RING. The circular shape green sapphire weighing approx. 1.40cts within a brilliant cut diamond surround, stamped 18ct, maker's marks RF&S, ring size N1/2, gross weight 6.7g. **£500-800**

Fine Jewellery, Watches & Designer, 28th Nov, 2024 11:00

130



AN EMERALD AND DIAMOND DRESS RING. The square shape emerald within a brilliant cut diamond surround and baguette cut diamond shoulders, stamped PLAT, ring size M, gross weight 3.3g. **£600-650**

133



AN AQUAMARINE DRESS RING. The emerald cut aquamarine weighing approx. 4.30cts with scrolling and tapered shoulders, ring size L1/2, gross weight 4.8g. **£200-400**

131



AN EMERALD AND DIAMOND CLUSTER RING. The emerald cut emerald weighing approx. 1.50cts within a vari size single cut diamond surround, ring size O1/2, gross weight 7.1g. **£400-600**

134



AN AQUAMARINE AND DIAMOND THREE STONE RING. The emerald cut aquamarine weighing approx. 2cts with brilliant cut diamond sides, estimated total diamond weight 0.30ct, stamped 18ct, ring size T, gross weight 3.8g. **£220-420**

132



AN 18CT GOLD DIAMOND THREE STONE RING BY BOODLES. The brilliant cut diamond line with tapered shoulders, total diamond weight 0.32ct, stamped to band, signed Boodles, hallmarks for London, 1987, ring size K1/2, gross weight 2.6g. **£450-650**

135



A DIAMOND FIVE STONE RING. The brilliant cut diamond line with tapered shoulders, estimated total diamond weight 1.80cts, estimated colour K-M, estimated clarity SI2-P1, stamped 18ct & Plat, ring size L, gross weight 4.3g. **£500-700**

Fine Jewellery, Watches & Designer, 28th Nov, 2024 11:00

136



AN AQUAMARINE AND DIAMOND CLUSTER RING. The square shape aquamarine within a baguette and brilliant cut diamond surround, stamped PLAT, ring size O, gross weight 3.4g. **£600-800**

139



A DIAMOND BAND RING. The brilliant cut diamond line with tapered shoulders, estimated total diamond weight 0.70ct, stamped 750, ring size K, gross weight 5.5g. **£300-500**

137



A 1970S 18CT GOLD SAPPHIRE AND DIAMOND DRESS RING. The circular shape sapphire duo and single cut diamond line within an oval openwork setting, sponsor's marks VA, import marks for London, 1972. ring size N1/2, gross weight 4.8g. **£150-250**

140



AN 18CT GOLD SAPPHIRE AND DIAMOND CLUSTER RING BY BOODLES. The oval shape sapphire within a brilliant cut diamond surround, total diamond weight 0.24ct, stamped to band, signed Boodles, hallmarks for London, ring size K, gross weight 3.4g. With maker's box. **£400-600**

138



A SAPPHIRE SINGLE STONE RING. The oval shape sapphire weighing approx. 0.75ct with tapered shoulders, stamped 22, ring size M1/2, gross weight 3g. **£150-250**

141



A DIAMOND THREE STONE RING. The brilliant cut diamond line with tapered shoulders, estimated total diamond weight 1.10cts, estimated colour K-L, estimated clarity P1-P2, stamped 18ct & Plat, ring size M1/2, gross weight 3.7g. **£350-550**

Fine Jewellery, Watches & Designer, 28th Nov, 2024 11:00

142



AN 18CT GOLD SAPPHIRE AND DIAMOND CLUSTER RING BY CROPP & FARR. The circular shape sapphire within a brilliant and baguette cut diamond surround, maker's marks for Cropp & Farr, hallmarks for London, 1988, ring size P, gross weight 2.8g.
This ring is to be sold for charity - proceeds will go to the LOROS charity, providing hospice care for Leicester/Leicestershire & Rutland. £150-250

145



A GEM SET DRESS RING. Of tapered design, the circular shape sapphire within a brilliant cut diamond partial surround, ring size O1/2, gross weight 10.3g. **£700-900**

146



AN AMETHYST DRESS RING. The cushion shape amethyst within a rubover setting, to the later split shoulders, possible conversion piece, ring size S1/2, gross weight 5.8g. **£60-120**

147



A GEORGIAN SPLIT PEARL CLUSTER RING. Together with a Georgian enamel and split pearl ouroboros mourning brooch, inscription dated 1814, ring size L1/2, length of brooch 1.5cm, gross weight 5.1g. **£80-120**

148



A TANZANITE AND DIAMOND CLUSTER RING. The emerald cut tanzanite weighing approx. 1.20cts within a brilliant and baguette cut diamond surround, estimated total diamond weight 0.60ct, ring size N1/2, gross weight 5.5g. **£1,100-1,400**

143



A DIAMOND BAND RING. The single cut diamond line with tapered shoulders, stamped 18ct, ring size L1/2, gross weight 3.5g. **£120-220**

144



Fine Jewellery, Watches & Designer, 28th Nov, 2024 11:00

AN AMETHYST AND DIAMOND CLUSTER RING. The oval shape amethyst within a brilliant cut diamond surround, estimated total diamond weight 0.70ct, stamped 18ct, ring size I, gross weight 6.7g. **£500-700**

152



A DIAMOND DRESS RING. The brilliant cut diamond within a similarly cut diamond openwork surround, estimated total diamond weight 0.65ct, stamped PLAT, ring size N, gross weight 4g. **£800-1,200**

153



A 14CT GOLD AMETHYST SINGLE STONE RING. The oval amethyst cabochon with tapered shoulders, USSR assay marks, ring size O1/2, gross weight 7.1g. **£60-120**

154



A DIAMOND SINGLE STONE RING. The brilliant cut diamond weighing approx. 0.35ct within an eight claw setting, estimated colour L-M, estimated clarity SI, stamped 18ct&Plat, ring size L1/2, gross weight 2.6g. **£100-150**

A PLATINUM DIAMOND BAND RING. The brilliant cut diamond line within a channel setting, estimated total diamond weight 0.20ct, hallmarks for Edinburgh, ring size I1/2, gross weight 4.2g. **£100-200**

150



AN AMETHYST AND SPLIT PEARL DRESS RING. The oval shape amethyst within a foliate split pearl surround, stamped 9ct, ring size O1/2, AF, gross weight 5.4g. **£80-120**

151



AN AMETHYST AND DIAMOND CLUSTER RING. The impressive oval shape amethyst weighing approx. 21cts within a brilliant cut diamond surround, estimated total diamond weight 1.45cts, ring size Q, gross weight 16.7g. **£500-700**

149



150

151

Fine Jewellery, Watches & Designer, 28th Nov, 2024 11:00

155



AN AMETHYST AND DIAMOND DRESS RING.

The emerald cut amethyst weighing approx. 2.20cts with stepped brilliant cut diamond shoulders, estimated total diamond weight 0.15ct, stamped PLAT, ring size N1/2, gross weight 4.2g. **£500-700**

158



A SELECTION OF CORAL JEWELLERY. To include a carved coral pendant stamped 14k suspended from a 9ct gold chain, two pairs of carved coral earrings, and a carved coral brooch in a silver setting (4). **£100-200**

156



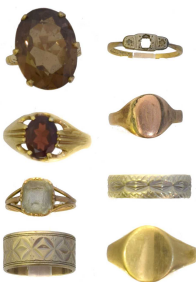
A CARNELIAN INTAGLIO RING. The oval intaglio depicting a classical bust, within a yellow metal setting, ring size K, gross weight 5.5g. **£250-450**

159



A PAIR OF GOLD PLATED MONTBLANC 'BAR' CUFFLINKS. Signed, length 2cm. With maker's pouch. **£50-70**

157



A SELECTION OF DRESS RINGS. To include two signet rings, two band rings, and four gem-set rings, five with hallmarks for 9ct gold, one stamped 9ct, two unmarked, ring sizes L to T1/2, gross weight 27.9g (8). **£400-450**

160



A PAIR OF 9CT GOLD CUFFLINKS. Each designed as a polished and engine turned rectangular panel with chain spacer, hallmarks for Birmingham, length 1.8cm, gross weight 6.8g. In a Boodle & Dunthorne case. **£100-200**

161



Fine Jewellery, Watches & Designer, 28th Nov, 2024 11:00

162

A PAIR OF AMETHYST CUFFLINKS. Each designed as an oval shape amethyst within a polished surround, stamped 14K, length 2.4cm, gross weight 12.7g. **£300-500**



A PAIR OF EARLY 20TH CENTURY CUFFLINKS. With 'Finem Respice' engraving, H & Co., stamped 15ct, gross weight 9g. **£150-250**

163



A PAIR OF JADE CUFFLINKS. Each designed as a circular jade carving, set atop a scrolling and textured rectangular panel, stamped 14k, length 2.5cm, gross weight 10g. **£300-500**

164



A PAIR OF 1920S 18CT GOLD CUFFLINKS. With engine turned design, sponsor's marks JH for James Harrison, Birmingham, 1925, length 1.8cm, gross weight 5g. **£150-200**

165



A PAIR OF EARLY 20TH CENTURY DRESS STUDS. Of oversized design, with floral engraving, maker's marks G.B, stamped 18ct, length 2.2cm, gross weight 9.2g. With a fitted case by Cook & Burchett, 72, 73 & 130 Oxford St. **£150-250**

166



A PAIR OF EARLY 20TH CENTURY CUFFLINKS. Hunting/equestrian interest - with bugle and riding crop terminals, length 2.4cm, gross weight 5.2g. In a *Charles Packer & Co Ltd. 76 & 78 Regent St London* fitted case. **£180-220**

167



A PAIR OF EARLY 20TH CENTURY ESSEX CRYSTAL CUFFLINKS. Hunting interest, with panels displaying horses and huntsmen jumping over hedges, water jumps, fence and five-bar gate, stamped 18, length 1.7cm, gross weight 9.8g. In an *R.F. Beard Ltd Promenade Cheltenham* fitted case. **£650-750**

Fine Jewellery, Watches & Designer, 28th Nov, 2024 11:00

168



A PAIR OF 18CT GOLD CUFFLINKS BY ASPREY. Each designed as a pair of oval shape panels with chain spacers, Asprey & Co, London, 1997, length 1.9cm, gross weight 18.3g. With case. **£650-850**

A LATE 19TH/EARLY 20TH CENTURY GEM-SET PARASOL HANDLE TERMINAL BY CHILD & CHILD. Of tapered form, the butterscotch amber handle encased within white metal mounts, set with round and oval gemstones to include cat's eye chrysoberyl, star pink sapphire, sapphire, turquoise, garnet, etc, with fancy belcher link chain handle, maker's sunflower mark together with registered 'wc hc' shield sponsor's mark, one gem deficient, length 5.6cm, gross weight 50.2g. Together with an early 20th century Brigg & Sons 9ct gold mounted silk parasol, bearing hallmarks for Charles Cooke, London, 1898. **£200-400**

172



AN EARLY 20TH CENTURY 9CT GOLD THIMBLE BY CHARLES HORNER. With monogrammed cartouche to front, hallmarks for Charles Horner, Chester, 1915, gross weight 4.3g. **£50-100**

169



A SELECTION OF CUFFLINKS. To include two pairs of 9ct gold cufflinks, and a cased set of unmarked yellow metal dress studs, gross weight of hallmarked items 9.4g. **£100-200**

173



A 9CT GOLD CALIBRI MONOPOL LIGHTER. With sponsor's and fineness marks to sleeve, monogrammed EP. **£200-400**

170



A SELECTION OF JEWELLERY. To include a cased set of dress studs, two sets of mother of pearl buttons, and a Georgian garnet and pearl mourning brooch. **£180-280**

174



171



Fine Jewellery, Watches & Designer, 28th Nov, 2024 11:00

A GEORG JENSEN SILVER BELT BUCKLE, NO. 112. Designed by Lene Munthe for Georg Jensen, with grooved detailing, maker's marks, stamped 925S Denmark, length 4.8cm, gross weight 26.7g. **£80-120**

175



A SILVER GILT ENAMEL BOOKMARK BY DAVID ANDERSEN. With green and brown enamel lion terminal, signed David-Andersen, stamped Norway Sterling, length 7.3cm, gross weight 5.6g. **£50-100**

176



A 9CT GOLD PROPELLING PENCIL BY SAMPSON MORDAN & CO. With an engine turned finish and vacant cartouche, maker's marks SM&Co, hallmarks for London, 1937, length 11.8cm, gross weight 26.8g. **£250-450**

177



A MECHANICAL PENCIL BY W.S. HICKS. Engine turned, with scrolling surmount, signed W.S. Hicks, New York, length 8.5 to 14.5cm, gross weight 36.2g. **£250-350**

178



A CARTIER GOLD PLATED 'TRINITY' PEN. Red, with Trinity detailing, signed Cartier Paris, with accompanying felt tip refill. **£50-100**

179



A SILVER GILT POMANDER. Possibly Danish, of spherical form, with one central compartment and eight segments inscribed for '1. Canel, 2. Moscat....., 4. Schlag, 5. Rufen, 6. Rosen, 7. Lauendel, 8. Citronen' dimensions 4.6 x 3.1 x 3.1cm. **£80-120**

180



A BURBERRY HANDBAG. The maker's nova check canvas with smooth black leather single handle and silver-tone hardware. (Dimensions: 30.5 x 26 x 10.5cm) **£50-100**

181



Fine Jewellery, Watches & Designer, 28th Nov, 2024 11:00

182

CAMROSE & KROSS - JBK JUST LIKE JACUQUELINE KENNEDY JEWELLERY. To include an imitation pearl necklace, a bracelet and a bangle, two boxed, with certs. **£50-100**



183

CAMROSE & KROSS - JBK JUST LIKE JACUQUELINE KENNEDY JEWELLERY. To include a bracelet, pair of earrings, and a fringe necklace. With maker's boxes and certs. **£50-100**



184

CAMROSE & KROSS - JBK JUST LIKE JACUQUELINE KENNEDY JEWELLERY. To include two pairs of earrings, a bangle and a brooch, cased, with certs. **£50-100**



CAMROSE & KROSS - JBK JUST LIKE JACUQUELINE KENNEDY JEWELLERY. To include two pairs of earrings and two bracelets, cased, with certs. **£50-100**

185



A PAIR OF CHANEL STUD EARRINGS. No. 122K, each designed as a paste and polished CC, length 1.3cm. **£300-500**

186



A CHRISTIAN DIOR PASTE NECKLACE. The colourless paste set triple link with flat curb link chain sides and spring clasp with maker's logo terminal, signed, length 40 - 45.5cm. **£50-100**

187



A SELECTION OF GEORG JENSEN ITEMS. To include a Georg Jensen 'Space' keyring in makers box, together with two leather bound notebooks, all in original wrapping, unopened (3). **£50-100**

188



Fine Jewellery, Watches & Designer, 28th Nov, 2024 11:00

A GUCCI QUARTZ WRISTWATCH, REF. 7900P. The signed square black dial with roman numeral markers, quartz movement within a stainless steel case, with leather strap and maker's folding clasp, case diameter 19mm. **£50-100**

192



A PAIR OF GUCCI LOAFERS. Tan smooth leather, with white metal accents, size 37. **£40-60**

193



A HERMÈS 'CHARMES DES PLAGES NORMANDES' COTTON SCARF. Designed by Loïc Dubigeon circa 1999, the vari hue scarf depicting seaside scenes, dimensions 66 x 68cm, signed Hermès. **£70-90**

194



A HERMÈS "COLLIERS DE CHIENS" SILK SCARF BY VIRGINE JAMI. Circa 2013, the vari-shade pattern depicting collars, dimensions 125 x 125cm, signed Hermès. (Dimensions: 125 x 125cm) **£100-200**

195



189



A GUCCI QUARTZ WRISTWATCH, REF. 9000L. The signed gold tone dial with baton markers and date aperture to 6, quartz movement within a gold plated and stainless steel case and fancy link bracelet with folding clasp, case diameter 25mm. With maker's case and spare links. **£80-120**

190



TWO PAIRS OF GUCCI HEELS. The smooth cream and black leather heels with gold tone accents, size 36 1/2. **£50-100**

191



A GUCCI 'TIGER HEAD' SHOULDER BAG. The beige suede and tan leather exterior with gold tone hardware and tiger head clasp, AF - clasp broken. (Dimensions: 28 x 16 x 3cm) **£60-120**

Fine Jewellery, Watches & Designer, 28th Nov, 2024 11:00

A HERMÈS 'LES OISEAUX DES ILES' SILK SCARF. Designed by Charles Pittner in 2007/2008 the cream and yellow ground depicting exotic birds, 70 x 70cm, signed Hermès. With maker's box.
(Dimensions: 70 x 70cm) **£90-140**

196



A HERMÈS 'PASSEMENTERIE' SILK SCARF. Designed by Francoise Heron, the black ground with vari-shade tassels, dimensions 88 x 88cm, signed Hermès.
(Dimensions: 88 x 88cm) **£80-120**

197



A HERMÈS 'TENDRESSE FELINE' SILK SCARF. The black and white ground depicting vari hue big cats and animals, 87 x 87cm, signed Hermès. In maker's box.
(Dimensions: 87 x 87cm) **£90-140**

198



A MULBERRY DARIA HOBO HANDBAG. The maker's oak grained leather exterior with gold tone hardware and plaited strap.
(Dimensions: 40 x 30 x 10cm) **£50-100**

199



A MULBERRY BOWLER BAG. The lizard skin exterior with gold tone accents and maker's check interior, dimensions 23 x 18 x 15cm. **£150-250**

200



A PUCCI TOP AND MISSONI CARDIGAN. Size UK 12 (2). **£50-100**

201



A SELECTION OF PIERRE CARDIN JEWELLERY. To include a necklace, together with a silver band ring, signed, length of necklace 46cm, ring size U, gross weight of ring 14.2g. **£60-120**

202



Fine Jewellery, Watches & Designer, 28th Nov, 2024 11:00

A PAIR OF PRADA GENTS SHOES. The speckled suede Prada shoes with dust bags and box, unworn (size 10 1/2) together with a pair of Zegna Sport suede boots, with dust bags and box (size 11). **£60-120**

203



A GEM-SET COCKTAIL WATCH. The rectangular dial with Arabic markers and inner chapter ring, 15 jewel manual wind movement signed Gothic Watches, within an unmarked white metal case set with triangular shape sapphires and single cut diamonds, case diameter 14mm, with later leather strap. **£70-90**

204



AN EARLY 20TH CENTURY FRENCH PLATINUM COCKTAIL WATCH. The tonneau shape dial with arabic markers and inner chapter ring, manual wind movement within a platinum case bearing French assay marks set with old cut diamonds and onyx panels, with a later 18ct gold mesh strap bearing Swiss assay marks, case diameter 10mm, gross weight 21g. **£500-800**

205



AN ART DECO DIAMOND COCKTAIL WATCH.

The rectangular dial with Arabic markers and inner chapter ring, unsigned manual wind movement within an unmarked white metal case, likely platinum, set with single and baguette cut diamonds, case diameter 10mm. **£300-500**

206



A 1930S 9CT GOLD JUMP HOUR MANUAL WIND WRISTWATCH.

With hour and minute windows, 15 jewel manual wind movement bearing Ebauches SA TR shield logo for Valjoux within a 9ct gold case bearing import marks for GR, Edinburgh, 1932, numbered 2041, case diameter 11mm, with later brown leather strap. **£100-200**

207



A 1970S 9CT GOLD AVIA MATIC INCABLOC AUTOMATIC WRISTWATCH.

The signed dial with baton markers and date aperture to 3, 25 jewel cal. 2742 ETA automatic movement within a 9ct gold case bearing hallmarks for London, 1970, case diameter 32mm, with unassociated leather strap. **£100-200**

208



Fine Jewellery, Watches & Designer, 28th Nov, 2024 11:00

AN 18CT GOLD BAUME & MERCIER QUARTZ WRISTWATCH, REF. 15205. The signed white dial with roman numeral markers, inner chapter ring and date aperture to 3, ETA 8 jewel quartz movement E64111 signed and numbered Baume et Mercier BM1164111 within an 18ct gold case bearing Swiss assay marks, numbered 15205 and 1823837, case diameter 32mm, with later unassociated black leather strap. **£300-500**

211



A 1970S 9CT GOLD BUECHE GIROD MANUAL WIND WRISTWATCH. The signed square shape dial with baton markers, signed 17 jewel manual wind movement within a 9ct gold case and textured tri-colour bracelet by Roy King, bearing sponsor's marks RCK and hallmarks for London, 1973, case diameter 15mm, length 16.6cm, gross weight 32.7g. **£500-800**

209



A BREITLING CHRONOMETER PREMIER AUTOMATIC WRISTWATCH, REF. A45340. The signed black dial with baton markers, outer chapter ring, day and date aperture to 6 and 12, automatic movement within a stainless steel case numbered A45340, with bracelet and folding clasp, case diameter 40mm. With maker's box, spare links, tags, booklets and international warranty card. **£1,500-2,500**

212



A CARTIER SANTOS GALBEE QUARTZ WRISTWATCH, REF. 1567. The signed dial with roman numeral markers, inner chapter ring and blued steel hands, quartz movement within a stainless steel and 18ct gold case numbered BB066715 with maker's bracelet and folding clasp, case diameter 24mm. With maker's box. **£700-900**

210



A 1970S 9CT GOLD BUECHE GIROD MANUAL WIND WRISTWATCH. The signed circular tiger's eye dial with tapered hands, signed cal. 2512 17 jewel manual wind movement within a 9ct gold case bearing hallmarks for London, 1975, sponsor's marks RCK for Roy King, to the tapered and textured bracelet with folding clasp, length 16.6cm, case diameter 24mm, gross weight 38.4g. **£600-800**

213



AN EBEL SPORT CLASSIQUE QUARTZ WRISTWATCH, REF. 1057901. The signed dial with baton markers, quartz movement within a stainless steel and gold plated case numbered 181022542, to the brown leather strap with maker's folding clasp, case diameter 23mm. With maker's box and booklets. **£120-220**

Fine Jewellery, Watches & Designer, 28th Nov, 2024 11:00

214



A 1960S 9CT GOLD GARRARD MANUAL WIND WRISTWATCH. The signed dial with baton markers, tapered hands and subsidiary seconds dial to 6, cal. 1120 ETA 17 jewel manual wind movement within a 9ct gold case bearing hallmarks for London, 1965, numbered 20147, with black leather strap, case diameter 32mm. **£200-400**

215



A 1950S STAINLESS STEEL GIRARD-PERREGAUX MANUAL WIND WRISTWATCH. The signed dial with baton markers and outer chapter ring, signed 17 jewel manual wind movement numbered 2009646 within a stainless steel case numbered 72761490, with maker's black leather strap and signed buckle, case diameter 34mm. With box. **£100-200**

216

A 1960S GIRARD-PERREGAUX 'GYROMATIC' AUTOMATIC WRISTWATCH. The signed dial with baton markers, outer minutes track and date aperture to 3, 25 jewels signed automatic movement numbered 3209278 within a stainless steel case, with unassociated leather strap, case diameter 34mm. **£100-200**

217



218



A 1970S HEUER CARRERA WRISTWATCH, REF. 73653 S (FIRST EDITION). Circa 1970, with first execution silver dial with baton numerals, black subsidiary dials to 3, 6, and 9, tachymeter outer track, pushers to 2 and 4, Valjoux 7736 manual wind movement within a stainless steel case, stamped 156936 and 73653 to case, case diameter 39mm, stainless steel bracelet. With original Heuer case. **£3,000-5,000**

219



A JAEGER-LECOULTRE REVERSO DUETTO WRISTWATCH, REF. 266.544. The signed rectangular silvered dial with Arabic hour markers and inner chapter ring, flipping to reveal a mother of pearl signed dial with diamond partial bezel, cal 844 mechanical movement within an 18ct gold, diamond and stainless steel case numbered 1967797, case width 20mm, to the fancy link bi-colour bracelet with maker's folding clasp. With box, papers and spare links. **£2,500-4,500**

Fine Jewellery, Watches & Designer, 28th Nov, 2024 11:00

220



A 1940S JW BENSON 'TANK' MANUAL WIND WRISTWATCH, REF. 99772. The signed dial with baton and arabic markers, outer chapter ring and subsidiary dial to 6, signed 15 jewel manual wind movement within a 9ct gold case bearing hallmarks for Birmingham, 1946, numbered 102739, with unassociated leather strap, case diameter 23mm. **£120-220**

221



A LACO BY LACHER AUTOMATIC PILOT'S WRISTWATCH. Limited edition no. 0402/1000, the signed black dial with luminescent outer seconds track, inner hours track, and date aperture to 3, exhibition case back revealing a signed 25 jewel automatic movement, within a matte stainless steel case inscribed Deutsche Post, Limitierte Edition, to the maker's black leather strap with signed stainless steel buckle, case diameter 35mm. **£150-250**

222



A 1970S 9CT GOLD LONGINES MANUAL WIND WRISTWATCH. The signed dial with baton markers, signed cal. 5602 17 jewel manual wind movement numbered 54119391 within a 9ct gold case bearing hallmarks for London, 1979, numbered 16090, to the integral bracelet with maker's logo folding clasp, case diameter 18mm, length 17cm, gross weight 27.9g. **£200-400**

223



A 9CT GOLD LONGINES MANUAL WIND WRISTWATCH. The signed dial with Arabic markers and outer minutes track, manual wind movement within a 9ct gold case and textured link bracelet bearing hallmarks for London, length of bracelet 18.3cm, case diameter 21mm, gross weight 25.1g. **£350-450**

224



A 9CT GOLD LONGINES QUARTZ WRISTWATCH. The white octagonal signed dial with roman numeral markers and inner chapter ring, 6 jewel ETA quartz movement within a 9ct gold case bearing hallmarks for Birmingham, 1991, with fancy link bracelet and folding clasp, case diameter 17mm, length 17.5cm, gross weight 26g. With maker's case. **£300-500**

Fine Jewellery, Watches & Designer, 28th Nov, 2024 11:00

225



A WWII LONGINES WEEMS AIR MINISTRY RAF PILOT/NAVIGATORS MANUAL WIND WRISTWATCH. Circa 1940, the signed circular dial with luminous arabic markers, outer chapter ring, luminous hands, and rotating bezel, signed cal. 12.68N 15 jewel manual wind movement numbered 6008088 within a stainless steel case numbered 21706 205 to the inside, no inscription to case back, second crown deficient, with later leather strap, case diameter 33mm. **£1,500-2,500**

226



A 9CT GOLD LONGINES MANUAL WIND WRISTWATCH. The signed dial with baton markers, manual wind movement within a 9ct gold case with integral textured bracelet bearing hallmarks for London, length 18.8cm, case diameter 18mm, gross weight 48.4g. **£700-900**

227



A 1970S 9CT GOLD MARVIN MANUAL WIND WRISTWATCH. The signed dial with baton markers and outer minutes track, signed 17 jewel manual wind movement within a 9ct gold case bearing hallmarks for London, 1974, numbered 033, case diameter 33mm, with later leather strap. With case. **£100-150**

228



AN OMEGA GENEVE MANUAL WIND WRISTWATCH, REF. 131.022. The signed gold tone cushion shape dial with baton markers, signed cal. 601 17 jewel manual wind movement numbered 31284191 within a stainless steel and gold plated case, case diameter 31mm. **£50-100**

229



A 1960S STAINLESS STEEL OMEGA SEAMASTER GENEVE AUTOMATIC WRISTWATCH, REF. 14774 SC-62. The signed dial with baton markers and outer minutes track, signed cal. 552 24 jewel automatic movement numbered 22984725 within a stainless steel case numbered 14774 SC-62, with leather strap, case diameter 34mm. **£300-500**

230



Fine Jewellery, Watches & Designer, 28th Nov, 2024 11:00

A 1960S OMEGA SEAMASTER AUTOMATIC WRISTWATCH, REF. 166.003. The signed dial with baton markers, outer minutes track and date aperture to 3, signed cal. 562 24 jewel automatic movement numbered 23020838 within a stainless steel and gold plated case numbered 166.003, with leather strap, case diameter 34mm. **£300-500**

233



231



A 1960S 18CT GOLD OMEGA SEAMASTER GENEVE AUTOMATIC WRISTWATCH, REF. 166010-64SC. The signed gold dial with baton markers, outer minutes track and date aperture to 3, signed cal. 562 24 jewel automatic movement numbered 21873295 within an 18ct gold case bearing Swiss assay marks, with leather strap, case diameter 34mm. **£1,000-2,000**

AN OMEGA SEAMASTER AQUA TERRA CO-AXIAL CHROMOMETER AUTOMATIC WRISTWATCH. The signed circular grey dial with tapered baton markers, outer minutes track, tapered hands and date aperture to 3, exhibition case back revealing a signed cal. 8500 co-axial 39 jewel automatic movement numbered 82062234, with maker's bracelet and deployment clasp, case diameter 41mm. **£1,500-2,500**

234



232



A 1950S OMEGA SEAMASTER AUTOMATIC WRISTWATCH REF. 2486 14SC. The signed dial with gold tone baton markers, inner chapter ring and tapered hands, signed cal. 502 20 jewel automatic movement numbered 16714141, within a stainless steel case numbered 2486 14SC, 2848, to the unassociated bracelet and folding clasp, case diameter 34mm. With maker's box. **£350-550**

A 1970S 9CT GOLD OMEGA MANUAL WIND WRISTWATCH, REF. 511.5002. The signed dial with baton markers, signed cal. 620 17 jewel manual wind movement numbered 34380660 within a 9ct gold case bearing hallmarks for London, 1973, length of bracelet 18.3cm, case diameter 19mm. **£300-500**

235



Fine Jewellery, Watches & Designer, 28th Nov, 2024 11:00

A 1930S 9CT GOLD ROLEX MANUAL WIND WRISTWATCH, REF. 2356. The signed rectangular dial with arabic markers, outer chapter ring and subsidiary dial to 6, signed 15 jewel manual wind movement numbered 9156 within a 9ct gold case bearing import marks for Glasgow, 1935, numbered 197C5 and 2356, with unassociated leather strap, case diameter 20mm. **£700-900**

236



A LADIES 1960S 9CT GOLD ROLEX PRECISION MANUAL WIND WRISTWATCH. The signed circular dial with baton markers, signed cal. 1400 18 jewel manual wind movement within a 9ct gold case bearing hallmarks for Chester, 1961, sponsor's marks Britton & Sons, numbered 62977, to the integral fancy link bracelet with crown folding clasp, case diameter 15mm, length of bracelet 17.7cm, gross weight 18g. With maker's box. **£300-500**

237



A 1960S 9CT GOLD ROLEX PRECISION MANUAL WIND WRISTWATCH, REF. 12865. The signed cream dial with Arabic markers and outer minutes track, signed cal. 950 17 jewel manual wind movement within a 9ct gold case bearing hallmarks for Birmingham, 1964, numbered 12865 and 337620, with later leather strap, case diameter 33mm. **£2,000-4,000**

238



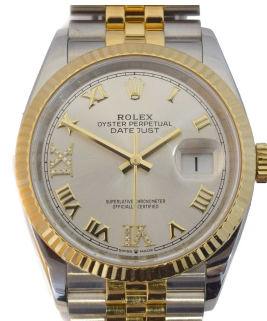
A 1960S STAINLESS STEEL ROLEX OYSTER PERPETUAL AIR KING SUPER PRECISION WRISTWATCH, REF. 5500. Circa 1963, the signed dial with gold tone baton markers and outer minutes track, automatic movement within a stainless steel case to the oyster bracelet and folding clasp, 845880, case diameter 34mm. **£1,500-2,500**

239



A LADIES STEEL AND GOLD ROLEX OYSTER PERPETUAL DATEJUST WRISTWATCH, REF. 69163. Circa 1988, the later black signed dial with diamond hour markers, date aperture to 3, with fluted bezel and jubilee bracelet, serial no. R360569, case diameter 26mm. With box and papers, original white dial with gold Roman numeral markers, polished bezel, spare link and tag. **£1,200-2,200**

240



Fine Jewellery, Watches & Designer, 28th Nov, 2024 11:00

† A STEEL AND GOLD ROLEX OYSTER PERPETUAL DATEJUST 36 WRISTWATCH, REF 126233. Circa 2020, the circular signed silver dial with polished and diamond roman numeral markers, outer minutes track and date aperture to 3, with fluted bezel and jubilee bracelet in gold and oystersteel, model no. 126233, 555Z****, case diameter 36mm. With box, papers, tags, spare links and travel case. **£7,000-9,000**

241



A TAG HEUER PROFESSIONAL 'NIGHT DIVER 1000' QUARTZ WRISTWATCH, REF. 980.113N. The signed luminescent dial with baton and dot markers, outer minutes track and date aperture to 3, quartz movement within a stainless steel case, to the maker's bracelet and folding clasp, case diameter 37mm. **£350-550**

242



A TISSOT STAINLESS STEEL 'T-TREND' QUARTZ WRISTWATCH, REF. L720. The oval signed dial with baton markers, quartz movement within a stainless steel case numbered TK0-BB-65028, to the tapered bracelet with deployment clasp, case diameter 21mm. With box, pouch and papers. **£50-100**

243



A LADIES TUDOR MANUAL WIND WRISTWATCH. The signed rectangular dial with Arabic, dot and baton markers and tapered hands, signed 17 jewel manual wind movement within a stainless steel case numbered 693677 797, with canvas strap and unassociated buckle, case diameter 15mm. **£50-100**

244



A WW2 MK VI MILITARY ISSUE COMPASS BY FRANCIS BARKER & SON LTD. B9790, numbered 5768, case diameter 46mm. **£40-60**

245



A 1920S SILVER TRAVEL CLOCK/POCKET WATCH BY MARVIN. Within a planished silver case, opening to reveal a white dial with Arabic markers, outer minutes track and subsidiary dial to 6, manual wind 15 jewel movement signed Marvin, Breguet HSPG, and Breguet, within a silver case numbered 597284, bearing import marks for Glasgow, 1928, case diameter 40mm, gross weight 53.7g. **£60-80**

Fine Jewellery, Watches & Designer, 28th Nov, 2024 11:00

246



AN 18CT GOLD OPEN FACE POCKET WATCH BY JAMES NELSON, LIVERPOOL. The gilt dial with floral detailing, fleur-de-lis hands and roman numeral marker, key wound movement signed and numbered 3887 within an 18ct gold case bearing hallmarks for Robert Over, Chester, 1862, case diameter 43mm, gross weight 61.1g. With key. **£700-900**

249



A 9CT GOLD VERTEX HALF HUNTER POCKET WATCH. The signed dial with roman numeral markers, outer minutes track and subsidiary dial to 6, hand wound signed 15 jewel movement within a 9ct gold case bearing hallmarks for Birmingham, 1952, numbered 705823, case diameter 48mm, gross weight 97.5g. **£450-650**

247



AN 18CT GOLD DECIMAL CHRONOGRAPH HUNTER POCKET WATCH BY JOHN LECOMBER, LIVERPOOL. The dial inscribed 'Decimal Chronograph Sept 13th 1875' with roman numeral markers, outer tracks to include a 0-300 scale, hand wound movement numbered 12662 within an 18ct gold case bearing hallmarks for BB (likely Benson Brothers) Chester, 1900, case diameter 52mm, gross weight 130.8g. *Glass deficient.* **£1,500-2,500**

250



AN 18CT GOLD FULL HUNTER FOB WATCH BY WALTHAM. The signed dial with roman numeral markers, outer minutes track and subsidiary dial to 6, signed hand wound movement numbered 11430256 within an 18ct gold case bearing Swiss assay marks, numbered 54682, case diameter 33mm, suspended from a 9ct gold brooch, gross weight 34.7g. **£250-450**

A COLLECTION OF WATCH BOOKS AND PUBLICATIONS. To include Patek Philippe (many with original cellophane in place) Rolex, etc (q). **£150-250**

248



251



Fine Jewellery, Watches & Designer, 28th Nov, 2024 11:00

A SELECTION OF WATCH ACCESSORIES. To include an Audemars Piguet box, an Omega box and an Omega travel case. **£50-100**

255



PATEK PHILIPPE - A TRAVEL CASE. In box. **£70-90**

252



BREITLING - A SELECTION OF ACCESSORIES. To include a cased Breitling for Bentley watch display stand, a Breitling rucksack, a Breitling cap, a Breitling CD case, and a Breitling t-shirt by Alpha Industries (5). **£50-100**

256



PATEK PHILIPPE - A LEATHER MINI NOTEBOOK. In maker's box. **£40-80**

253



PATEK PHILIPPE - THREE SILK TIES. In original boxes (3). **£120-220**

257



PATEK PHILIPPE - A LEATHER BOUND NOTEBOOK. With maker's pen. **£50-100**

254



PATEK PHILIPPE - AN EYEGLASS/LOUPE In maker's box. **£50-100**

258



PATEK PHILIPPE - AN EMPTY WATCH BOX. As new. **£200-400**

Fine Jewellery, Watches & Designer, 28th Nov, 2024 11:00

259



ROLEX - A SELECTION OF ACCESSORIES.

To include two branded umbrellas, a silk tie, wallet, dress stud, pen, booklet, accessories, etc. **£150-250**