

Wilson55

AUCTIONEERS & VALUERS

Fine & Classic, 9th Jan, 2025 11:00

1



AN EPNS AND AMBER GLASS BEE HONEY POT BY MAPPIN & WEBB. Realistically modelled with amber glass abdomen, signed, spoon deficient. **£200-400**

2



A GEORGE IV AND LATER SILVER PART CANTEEN. Fiddle and thread pattern, monogrammed H terminals, comprising six dinner forks, six dessert forks, two table spoons, nine dessert spoons, and six teaspoons, assorted marks - most George Whiting, London, 1862, gross weight 53.38ozt. **£500-800**

3



A GEORGE VI SILVER GOBLET. Possibly filled, A L Davenport Ltd, Birmingham, 1937, height 21.2cm, gross weight 7.06ozt. **£100-200**

4



A PAIR OF GEORGE V SILVER ENAMEL PLACE HOLDERS BY SAMPSON MORDAN & CO. With vari hue enamel horseshoe logo, Sampson Mordan & Co., London, 1929, gross weight 2.56ozt. In fitted *Aitchison Edinburgh* case. **£60-120**

5



A GEORGE III MINIATURE CHAMBER STICK. Sponsor's marks JA, diameter 10cm. **£50-100**

6



A GEORGE III SILVER TEAPOT. William Vincent, London, date letter worn, height 10.2cm, gross weight 14.27ozt. **£150-200**

7



Fine & Classic, 9th Jan, 2025 11:00

A GEORGE II SILVER LOVING CUP. Scratch marks 'W.W.M' to front, Thomas Moore II, London, 1758, height 11.5cm, gross weight 9.49ozt. **£150-250**

11



A WILLIAM IV SILVER PART CANTEEN. Fiddle pattern, comprising seven table spoons, eleven dessert spoons, nine dessert forks, thirteen dinner forks and a teaspoon, William Bateman II, London, 1836, gross weight 100.08ozt. **£1,200-2,200**

8



A GEORGE III SILVER INK STAND. John Emes, London, 1802, gross weight of stand 5.51ozt. **£120-220**

12



A LARGE SELECTION OF SILVER AND WHITE METAL FLATWARE. Assorted, various marks, gross weight of HMS items 59.60ozt, gross weight of foreign marked items 6.18ozt. **£800-1,200**

9



A SELECTION OF 18TH CENTURY AND LATER SPOONS. To include a serving spoon by Thomas & William Chawner, and four table spoons, assorted marks, gross weight 11ozt. **£120-220**

13



A SELECTION OF SILVER AND WHITE METAL ITEMS. Assorted, to include napkin rings, cups, vases etc, various marks, gross weight of solid HMS items 8.67ozt, gross weight of foreign marked items 17.09ozt. **£600-700**

10



A GEORGIAN SILVER NUTMEG GRATER. Barrel shaped with engraved detailing, maker's mark only, DF, David Field, gross weight 0.51ozt. **£100-150**

Fine & Classic, 9th Jan, 2025 11:00

14



A SELECTION OF SILVER FLATWARE. Assorted, to include a fish slice, spoons, etc, gross weight 51.63ozt. **£600-800**

15



A SELECTION OF SILVER AND WHITE METAL FLATWARE. Various, to include a set of Chinese export silver spoons by Wing On & Co., an Arts & Crafts spoon, Irish silver, etc. gross weight of solid HMS items 35.1ozt. **£450-650**

16



AN ELIZABETH II SILVER THREE PIECE TEA SET. Douglas Heeley, Sheffield, 1959, gross weight 38.55ozt. **£450-650**

17



A VICTORIAN NOVELTY TOADSTOOL SILVER SHAKER. Edward H Stockwell, London, 1874, gross weight 1.49ozt. **£400-600**

18



A SELECTION OF SILVER AND WHITE METAL ITEMS. To include silver cigarette cases, pots, manicure set, lighter, etc, gross weight of solid HMS items 12.71ozt. **£400-450**

19



A GEORGE IV SILVER CHAMBERSTICK. Robert Garrard I, London, 1803, height 11.7cm, gross weight 11.95ozt. **£300-500**

20



A SELECTION OF ASSORTED SILVER AND WHITE METAL FLATWARE. Gross weight of HMS 21.46ozt. **£300-350**

Fine & Classic, 9th Jan, 2025 11:00

21



A SELECTION OF SILVER. To include a sugar bowl, mug, milk jug, bonbon dish, dressing table items, etc, gross weight of solid HMS items 27.04ozt. **£300-500**

22



A SELECTION OF SILVER AND WHITE METAL ITEMS. To include a silver tea caddy by Ridley & Hayes, sauce boat, milk jug, salts, napkin rings and a bonbon dish, together with an Indian silver handled shoe horn and a base metal novelty golf stopper, gross weight of solid HMS items 23.96ozt. **£300-500**

23



AN ART NOUVEAU SILVER AND PAINTED GLASS FOUR-PIECE DRESSING TABLE SET. With embossed and sinuous silver lids, J Collyer & Co Ltd, Birmingham, 1903-4 (4). **£200-400**

24



A SELECTION OF GEORGE III AND LATER FLATWARE. To include six silver dinner forks and three dessert forks, William Eaton 1820-1, and 1845, gross weight 18.84ozt. **£200-300**

25



AN EDWARD VII SILVER TEAPOT. J Sherwood & Sons, Birmingham, 1905, height 13.3cm, gross weight 14.91ozt. **£200-400**

26



AN ELIZABETH II COMMEMORATIVE SILVER AND SILVER GILT 'THE WESTMINSTER CATHEDRAL GOBLET'. An Elizabeth II commemorative silver and silver gilt 'The Westminster Cathedral Goblet', limited edition 172/1000, Jocelyn Burton, London, 1979, height 20.7cm. weight 11.80ozt - base likely filled **£200-400**

Wilson55

AUCTIONEERS & VALUERS

Fine & Classic, 9th Jan, 2025 11:00

27



AN ELIZABETH II COMMEMORATIVE SILVER AND SILVER GILT 'THE WESTMINSTER CATHEDRAL GOBLET'.

An Elizabeth II commemorative silver and silver gilt 'The Westminster Cathedral Goblet', limited edition 171/1000, Jocelyn Burton, London, 1979, height 20.7cm.

Weight 11.21ozt - likely filled **£200-400**

28



A SELECTION OF SILVER AND WHITE METAL ITEMS. To include a twin handled cup, salts, basket, etc, gross weight of solid HMS items 17.64ozt. **£150-250**

29



A SILVER CRUET SET B&Co, Birmingham, 2005 and London, 1927, gross weight 7.1ozt. **£120-220**

30



A SELECTION OF SILVER. To include a Victorian silver vase (base possibly filled), nine silver teaspoons, napkin rings, etc, gross weight of solid HMS items 10.88ozt. **£120-220**

31



A SELECTION OF SILVER. To include a silver backed dressing table set, a cruet set, milk jug, spoons, etc, gross weight of solid HMS items 12.6ozt. **£120-220**

32



A SELECTION OF SILVER ITEMS. To include cigarette cases, spoons, button hooks, etc, gross weight of solid HMS items 9.99ozt. **£120-220**

33



Buyer's Premium of 25% +VAT on each lot

Fine & Classic, 9th Jan, 2025 11:00

Page 5 of 47

Fine & Classic, 9th Jan, 2025 11:00

A SELECTION OF SILVER PILL BOXES. To include a cased 'The St. James' House Collection' comprising six boxes with lids depicting birds, together with a commemorative Charles and Diana wedding box. **£120-220**

34



AN INDIAN COLONIAL SILVER BOWL, BY DASS AND DUTT. Signed, dimensions 13.2 x 15 x 5.7cm, gross weight 5.66ozt. **£100-150**

35



A VICTORIAN SILVER MOUNTED SWING HANDLED VASE. Charles Thomas Fox & George Fox, London, 1860, height 8.5cm. **£100-150**

36



SIX GEORGE III SILVER DESSERT FORKS. Richard Britton, London, 1820, gross weight 13.31ozt. **£100-200**

37



A SELECTION OF CONTINENTAL SILVER FLATWARE. Various marks, gross weight 16.36ozt. **£100-200**

38



A SELECTION OF SILVER AND WHITE METAL ITEMS. To include a filigree bonbon dish marked 925S, a pair of cased Danish silver and enamel open salts, a pair of Danish silver spoons, and a silver fronted frame, gross weight of solid marked items 8.28ozt. **£100-200**

39



A VICTORIAN SILVER QUICHE. Aaron Hadfield, Sheffield, 1851, gross weight 4.76ozt. **£80-120**

40



Wilson55

AUCTIONEERS & VALUERS

Fine & Classic, 9th Jan, 2025 11:00

A VICTORIAN SILVER FISH SLICE. G.W, probably George White, Glasgow, 1845, gross weight 6.85ozt. **£80-120**

41



AN ELIZABETH II SILVER COMMEMORATIVE GOBLET. Royal Silver Wedding, Mappin & Webb, London, 1972, gross weight 7.19ozt. With fitted case and scroll. **£80-120**

42



A GEORGE V SILVER CRUET SET. William Neale & Son Ltd, Birmingham, 1927, two spoons deficient, gross weight 5.61ozt. **£60-120**

43



A GEORGE III SILVER PAP BOAT. Charles Fox I, London, 1803, gross weight 2.50ozt. **£50-100**

44



A GEORGE III SILVER LOVING CUP James Wilks, London, 1760, height 8.5cm, gross weight 4.02ozt. **£50-100**

45



A CHINESE WHITE METAL MODEL OF A SHIP. The traditional ship, applied with oars, figures and sails and raised on a carved wooden base, within a glazed case, dimensions of case 39 x 33.5 x 17cm. **£50-100**

46



A VICTORIAN SILVER SQUEEZE BOX. With crest and 'Chesis L'Espoir' detailing, Augustus George Piesse, London, 1863, length 9.7cm, gross weight 3ozt. **£50-70**

47



A GEORGIAN SILVER MARROW SCOOP. With engraved crest, marks worn, IC, length 22.4cm, gross weight 2.03ozt. **£50-70**

Fine & Classic, 9th Jan, 2025 11:00

48



A SILVER PLATED SWING HANDLED DISH.
Dimensions 36.5 x 31 x 31cm. **£50-100**

49



THREE CHINESE SILVER SALTS. 90, Wang Hing, gross weight 3.35ozt. **£50-100**

50



A LATE VICTORIAN DOUBLE ENDED CRANBERRY GLASS SCENT BOTTLE. Length 14.8cm, AF. **£40-60**

51



TWO SILVER COMPACTS. One set with a carved faux jade panel and marcasite detailing, Crisford & Norris, Birmingham, 1935, the other engine turned Turner & Simpson, Birmingham, 1925, gross weight 4.5ozt. **£40-60**

52



A TIFFANY & CO SILVER SOUVENIR SPOON. New York, detailed with the Statue of Liberty and the Flatiron building, signed, length 15.5cm, gross weight 1.07ozt. **£40-60**

53



A DANISH SILVER ENAMEL SPOON BY P. HERTZ. Danish marks, .924 silver, signed P. Hertz, gross weight 1.63ozt. **£30-50**

54



Fine & Classic, 9th Jan, 2025 11:00

"THE GARRARD SILVER JUBILEE CLOCK" MANUFACTURED FOR GARRARD BY F. W. ELLIOTT LTD. **"The Garrard Silver Jubilee Clock"**, limited edition no. 214/250, mahogany cased and mounted with sterling silver handle and face-plate both bearing the 1977 Silver Jubilee hallmark, the dial engraved with a Tudor Rose and bearing applied silvered Queen's Cypher above chapter ring set with Roman hour markers, Arabic minute markers and arrow-head half-hour markers, further engraved with the royal residences of Windsor Castle, Buckingham Palace, Holyrood House and Balmoral to each corner, the side frets also featuring the Royal Cypher between Tudor Roses, the 28-day fusee movement striking on bells to produce Westminster, Whittington or Winchester chimes chosen by a selector to the back plate, this inscribed *Specially Commissioned by Garrard The Crown Jewellers from F. W. Elliott Ltd. 214/250* and engraved with further Tudor Rose motifs, raised on stepped base to sterling silver bracket feet, with original key, accompanied by a framed Certificate of Authenticity signed by the Managing Director, booklet, compliments slip and additional related papers.
(Dimensions: 38cm high, 25.5cm wide, 15.5cm deep) **£800-1,200**

55



A LATE 17TH OR EARLY 18TH CENTURY EBONISED BRACKET CLOCK A Late 17th or Early 18th Century Ebonised Bracket Clock, the caddy top with brass handle above fretwork panels to front and both sides, the silvered chapter ring set with Roman numeral hour markers, Arabic minute markers and 'arrow-head' markers on the half hours and half quarters and further featuring faux pendulum aperture and date aperture, signed *Constantin London*, the brass plate set with cherub head spandrels, with triple fusee and twin drum movement striking on a bell and six chimes, the back plate further signed *John Constantin London* against foliate scroll engraved detail and applied pierced mount, the case raised on a moulded and stepped base to bracket feet.
(Dimensions: 38.5cm high (including handle), 25.5cm wide)
For a similar example see Bonhams, Lot 106, 28 June 2011
(<https://www.bonhams.com/auction/18866/lot/106/a-late-17th-century-ebony-veneered-bracket-clock-constantin-london/>) **£2,500-3,500**

56



A VICTORIAN OAK CASED DROP DIAL WALL CLOCK A Victorian Oak Cased Drop Dial Wall Clock, the circular 11.5" dial set with Roman numerals above glazed door, thirty-hour movement, with pendulum.
(Dimensions: 56.5cm long) **£60-100**

57



Fine & Classic, 9th Jan, 2025 11:00

A LATE 19TH CENTURY FRENCH BRASS MANTEL CLOCK OF ARCHITECTURAL FORM

A Late 19th Century French Brass Mantel Clock of Architectural Form, the shaped top set with five cast finials and relief frieze detail above silvered chapter ring set with Roman numerals within cast border, this flanked by twin columns and above panel all featuring further relief detail of birds, deer and dogs against foliate scrolls, the eight-day movement striking on a coil and stamped *AB* with star within oval for Achille Brocot, all raised on a stepped base featuring beaded and repeated foliate detail to bracket feet, with pendulum.

(Dimensions: 39cm high, 25cm wide) **£50-80**

58



A 19TH CENTURY FRENCH ROCOCO REVIVAL MANTEL CLOCK A 19th Century French Rococo Revival Mantel Clock, the cast and bronzed metal case with foliate and scroll detail throughout, the gilt relief decorated dial set with enamelled Roman numeral hour markers, the eight-day movement striking on a bell, the backplate stamped *Roblin A Paris* and further signed *C. F. Thlee in Frankfurt*, with key and pendulum.

(Dimensions: 26cm high) **£50-100**

59



A LATE 19TH CENTURY WALNUT VIENNA-TYPE WALL CLOCK BY GUSTAV BECKER A Late 19th Century Walnut Vienna-Type Wall Clock by Gustav Becker, with architectural pediment above enamelled chapter ring set with Roman numerals, eight-day movement with twin weight and pendulum.

(Dimensions: 133cm high) **£50-80**

60



AN "EDISON AMBEROLA" CYLINDER PHONOGRAPH BY THOMAS A. EDISON INC.

An "Edison Amberola" Cylinder Phonograph by Thomas A. Edison Inc., model BVIII, serial no. 10198, oak cased with gilt *Edison* markings, applied plaque and painted "faux-bois" front metal grille, with winding handle, accompanied by four Edison Blue Amberols.

(Dimensions: 34cm wide, 42cm deep, 59.5cm high (with lid raised))

This series of Amberola machines denoted by a progression of Roman numerals were introduced in 1911 but many were destroyed in a factory fire of 1914; a second series followed but these are generally regarded as lower in quality to the first run in which this machine is included. **£100-200**

61



A BOX SEXTANT BY STANLEY OF LONDON

Box Sextant by Stanley of London, japanned brass with separate telescope, signed *Stanley London*, in original stitched and fitted leather case with instruction leaflet.

(Dimensions: 8.3cm diameter) **£100-200**

62



Fine & Classic, 9th Jan, 2025 11:00

A 19TH CENTURY FIVE-DRAWER TELESCOPE BY DOLLAND OF LONDON A 19th Century Four-Drawer Telescope by Dolland of London, in nickel-plated white metal with stitched leather grip, caps and strap, signed *Dolland London* and no. 5147 beneath engraved device.

(Dimensions: 107cm long when fully extended) **£50-100**

63



A GEORGE III LACQUERED MAHOGANY AND BRASS-MOUNTED OYSTER BUCKET A George III Lacquered Mahogany and Brass-Mounted Oyster Bucket, of navette outline with swing handle, no liner.

(Dimensions: 38.5cm wide, 33cm high excluding handle) **£600-1,000**

64



AN 18TH OR 19TH CENTURY BRONZE PESTLE AND MORTAR An 18th or 19th Century Bronze Pestle and Mortar, the pestle ring turned and knopped, both unmarked.

(Dimensions: The pestle 22cm long, the mortar 10.5cm high) **£40-60**

65



AN EARLY 20TH CENTURY ARTS & CRAFTS-TYPE COPPER AND BRASS PLATTER An Early 20th Century Arts & Crafts-Type Copper and Brass Platter, modelled as a fish, possibly French, the beaten cover enclosing a silvered interior, unmarked.

(Dimensions: 46cm long) **£50-100**

66



NANTWICH INTEREST A RARE AND ORIGINAL "LAMB HOTEL | GARAGE" ADVERTISING SIGN A Rare and Original "Lamb Hotel | Garage" Advertising Sign, early-mid 20th century, stencilled black lettering against white painted ground on wooden board, double-sided with mirrored detail to reverse.

(Dimensions: 52cm high, 73cm wide) Salvaged from a local residence.

The Lamb Hotel, now Chatterton House, on Hospital Street, Nantwich, has been the site of an inn from 1554; the present building was built in 1861 and this sign dates from the early to mid-20th century. **£80-120**

67



Fine & Classic, 9th Jan, 2025 11:00

JAMES POWELL & SONS (WHITEFRIARS) GLASS, BRITISH ARTS AND PARIS 1889 EXPOSITION INTEREST THE MEDALS AWARDED TO HARRY JAMES POWELL CBE
The Medals Awarded to Harry James Powell CBE (British 1853-1922), comprising bronze Paris 1889 Exposition Universelle Medal and rare gilt-metal "Jury" lapel badge (Powell was likely involved in the judging of glass), silver Society of Arts Manufactures and Commerce Medal stamped to edge "Harry Powell, for his Paper on Cut Glass. Session 1905--6." and Commander of the Order of the British Empire Medal by Garrard & Co. Ltd., the latter three each in their original case of issue.

All medals in original condition, Commerce Medal case as follows.

Harry James Powell (British 1853-1922) was the manager and chief glassmaker of his family firm James Powell & Sons where he would play a prominent part in the advancement of British art glass through the Art Nouveau and Arts & Crafts movements.

He was a visionary businessman as well as a glass designer and brought the Powell firm to the forefront of international manufacturers, forging a reputation in Europe and across the Atlantic for the beauty and quality of Powell glass - this reputation was reflected in his selection as a member of the British Jury for the Paris 1889 Exposition Universelle at which, famously, the Eiffel Tower was unveiled.

Powell worked with his son-in-law Herbert Brereton Baker for the War Office and reported to then Minister of Munitions Winston Churchill during WWI to produce specialised glass for the war effort with their contributions particularly noted for the development of submarine mines, earning both of them the CBE, before he retired in 1919. **£600-1,000**

68



SCIENTIFIC HISTORY INTEREST THE MEDALS AWARDED TO HERBERT BRERETON BAKER FRS CBE, HEAD OF CHEMISTRY AT IMPERIAL COLLEGE LONDON
The Awards and Medals Awarded to the Inorganic Chemist Herbert Brereton Baker FRS CBE (British 1862-1935), comprising the Longstaff Medal for Chemical Research awarded in 1912 by the Chemical Society of London, the Commander of the Order of the British Empire Medal by Garrard & Co. Ltd. awarded in 1917, the Davy Medal awarded by the Royal Society in 1923 and the Marcelin Berthelot Centenary Medal awarded in 1927, the first three each in their original case of issue. Herbert Brereton Baker FRS CBE (British 1862-1935) studied at Balliol College, Oxford, before becoming Chemistry Master at Dulwich College and later lectured in inorganic chemistry at Christ Church, Oxford, before graduating to a professorship at Imperial College, London, until retirement.

His most important research focused on the effects of drying on chemicals and the catalytic effect of moisture in chemical reactions and it was due to this research that he was awarded the Davy Medal for 'his researches on the complete drying of gases and liquids'; Baker was appointed as scientific advisor to the War Office during WWI where he worked with his father-in-law, Harry James Powell, scion of the Whitefriars glass firm, reporting to then Minister of Munitions Winston Churchill to test and produce specially resistant contact 'horns' for submarine mines.

Baker had married Muriel Powell, a fellow Oxford chemistry graduate, in 1905, having published a paper with her and they continued their researches together in a home laboratory.

Credits:

https://en.wikipedia.org/wiki/Herbert_Brereton_Baker;

<https://royalsocietypublishing.org/doi/10.1098/rsbm.1935.0015>. **£400-600**

69



Fine & Classic, 9th Jan, 2025 11:00

A LARGE AND IMPRESSIVE OPPOSING PAIR OF BRONZE EQUESTRIAN FIGURE GROUPS ATTRIBUTED TO LOUIS-MARIE MORIS (FRENCH 1818-1883/4) A Large and Impressive Opposing Pair of Bronze Equestrian Figure Groups, circa mid-late 19th century, modelled as two soldiers mounted on horseback each in single combat, the figures all depicted in full armour and both horses caparisoned, each on naturalistically modelled raised oval base and bearing impressed *Moris* signature. (Dimensions: 48cm high, 58cm long, 24cm wide) **£500-800**

70



A PAIR OF 19TH CENTURY FRENCH BRONZE ROCOCO REVIVAL EWERS BY CHARLES LEBLANC A Pair of 19th Century French Bronze Rococo Revival Ewers by Charles Leblanc, with shaped rims and spouts, scrolled foliate S-scroll handles and bands of cast relief detail depicting a hound chasing game against a foliate scroll ground, both with applied lion masks and lower 'wyvern' strap joints with further repeated detail and raised on knopped socle bases, signed *Ch. Leblanc* to interior. (Dimensions: 27.5cm high) **£500-800**

71



A LARGE AND IMPRESSIVE LATE 19TH / EARLY 20TH CENTURY ALLEGORICAL BRONZE FIGURE ATTRIBUTED TO RUDOLF KUCHLER (AUSTRIAN 1867-1954) A Large and Impressive Late 19th / Early 20th Century Allegorical Bronze Figure Attributed to Rudolf Kuchler (Austrian 1867-1954), modelled as a labourer or blacksmith operating a cog or gear with two-tone patination on rectangular base bearing impressed *R. Kuchler* signature, raised on a marble plinth. (Dimensions: 62cm high excluding marble) **£1,500-2,000**

72



A PAIR OF EARLY 20TH CENTURY ART NOUVEAU BRONZE FIGURES AFTER ERNEST RANCOULET A Pair of Early 20th Century Art Nouveau Bronze Figures After Ernest Rancoület, modelled as a female flower picker with basket and male sportsman with rifle, both raised on socle plinths to marble bases, the upper sections naturalistically textured and bearing impressed *Rancoület* signature. (Dimensions: 51cm high) **£800-1,200**

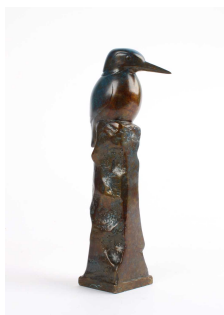
73



FRENCH ART DECO FIGURE AFTER J. D'ARSENES "ROBIN DES BOIS" ("ROBIN HOOD") Early-mid 20th century, patinated and cold-painted bronze alloy with simulated ivory, presented on a shaped rectangular onyx base, unmarked. (Dimensions: 75cm high, 40cm wide) **£800-1,200**

Fine & Classic, 9th Jan, 2025 11:00

74



§ **ELFYN ROBERTS BA (WELSH 1945-)**
"KINGFISHER" "Kingfisher", a cast and patinated bronze sculpture, no. 1/9, modelled perched on an integral shaped and textured column, bearing impressed *ER* monogram.
(Dimensions: 21cm high)

Elfyn Roberts BA grew up on a small farm near Dolgellau in the 1950s and graduated from the Manchester College of Art & Design; after a career in higher education Elfyn has combined the inspiration of his rural childhood with his technical and artistic skills to become a multi-discipline artist, producing paintings and raku ceramics as well as his finely sculpted foundry cast bronzes. **£700-900**

75



§ **ELFYN ROBERTS BA (WELSH 1945-)**
"RUNNING HARE" "Running Hare", a cast and patinated bronze sculpture, no. 1/9, modelled mid-stride on a textured rectangular base, bearing impressed *ER* monogram.
(Dimensions: 15.5cm long, 11cm high)

Elfyn Roberts BA grew up on a small farm near Dolgellau in the 1950s and graduated from the Manchester College of Art & Design; after a career in higher education Elfyn has combined the inspiration of his rural childhood with his technical and artistic skills to become a multi-discipline artist, producing paintings and raku ceramics as well as his finely sculpted foundry cast bronzes. **£1,000-1,500**

76



A BRONZE HORSE FIGURE AFTER P. J. MENE A Bronze Horse Figure After P. J. Mene, mid-late 20th century, modelled four-square in mid-gallop to naturalistically modelled base, the stepped surround bearing impressed *P. J. Mene* signature, raised on marble plinth.
(Dimensions: 41.5cm long, 28cm high) **£200-300**

77



A COLLECTION OF 18TH CENTURY CLEAR DRINKING GLASSES A Collection of 18th Century Clear Drinking Glasses, comprising four wine glasses, two with teardrop stem and one with waisted stem, all on folded foot, an ale glass with knopped stem and an illusion bowl firing glass.
(Dimensions: The tallest 17.7cm high) **£80-120**

78



Fine & Classic, 9th Jan, 2025 11:00

A "JACOBITE" ENGRAVED CLEAR GLASS GOBLET A "Jacobite" Engraved Clear Glass Goblet, the bell shaped bowl engraved with portrait of Prince Charles Edward Stuart within laurel cartouche and flanked by rose buds and stems with thistle and star to the reverse, raised on quadruple 'air dropped' knob stem to spreading circular foot with polished pontil scar. (Dimensions: 15.5cm high) **£80-120**

79



A 19TH CENTURY WEDGWOOD MINIATURE BLACK BASALT TWIN-HANDLED URN A 19th Century Wedgwood Miniature Black Basalt Twin-Handled Urn, decorated with repeated foliate bands and swags with central Classical procession frieze in relief, stamped *Wedgwood* and *H* marks to underside. (Dimensions: 12cm high) **£50-80**

80



A WEDGWOOD BLACK BASALT "HEDGEHOG" CROCUS POT AND STAND A Wedgwood Black Basalt "Hedgehog" Crocus Pot and Stand, both with impressed *Wedgwood Made in England* marks, the stand further impressed *A 75*. (Dimensions: The pot 23.5cm long, 15cm high) **£50-100**

81



A WEDGWOOD GREEN JASPERWARE URN WITH COVER AND LARGE BOWL A Wedgwood Green Jasperware Urn with Cover and Large Bowl, the urn with twin handles and raised on square section base, both decorated with classical friezes and further foliate detail, both bearing impressed *Wedgwood Made in England* mark and *HB* monogram. (Dimensions: The urn 30cm high including cover, the bowl 26cm diameter) **£100-200**

82



LINTHORPE ART POTTERY, MIDDLESBOROUGH PAIR OF TURQUOISE GLAZED VASES Circa 1880-90, shape 1767, baluster form with crimped rims, impressed marks to bases. (Dimensions: 22cm high) **£40-60**

83



Fine & Classic, 9th Jan, 2025 11:00

WILLIAM MOORCROFT LARGE "NATURAL POTTERY" FLAMBE VASE Circa 1933, the shaped 'organic' ribbed body in oxblood, teal and cobalt blue high-fired glaze, impressed *W. Moorcroft Potter to H.M. The Queen and Made in England* marks to base, possibly produced for an exhibition.

(Dimensions: 35cm high, 22.5cm wide)

Purchased from Bunda Antique Gallery, Sydney, who suggest the possibility of exhibition in the associated paperwork.

As per Bunda Fine Antiques accompanying literature:

'The colours and glaze of this vase are achieved by excluding oxygen in the firing process. It is an effect that is extremely difficult to achieve and at the time that Moorcroft was producing these wares there was an enormous amount of waste due to many pieces being broken during the firing process and a great number to which the glaze would not take... Upon release on the to the market they were bought for incredibly high prices. The rarity of this piece can not be underestimated: such a small percentage of pieces survived the firing process that their value is very high... William Moorcroft developed these wares as a response to the drop in popularity of Moorcroft's classic designs... The oxblood wares were very successful and achieved what Moorcroft had intended by providing a torally new product which could compete with any of the deco wares...' **£200-400**

84



WILLIAM MOORCROFT "NATURAL POTTERY" FLAMBE VASE Circa 1933, the 'organic' pinched and ribbed body in oxblood and teal high-fired glaze, impressed *W. Moorcroft Potter to H.M. The Queen and Made in England* marks to base.

(Dimensions: 12cm high, 12.3cm wide)

Purchased from Bunda Antique Gallery, Sydney. As per Bunda Fine Antiques accompanying literature:

'The colours and glaze of this vase are achieved by excluding oxygen in the firing process. It is an effect that is extremely difficult to achieve and at the time that Moorcroft was producing these wares there was an enormous amount of waste due to many pieces being broken during the firing process and a great number to which the glaze would not take... Upon release on the to the market they were bought for incredibly high prices. The rarity of this piece can not be underestimated: such a small percentage of pieces survived the firing process that their value is very high... William Moorcroft developed these wares as a response to the drop in popularity of Moorcroft's classic designs... The oxblood wares were very successful and achieved what Moorcroft had intended by providing a torally new product which could compete with any of the deco wares...' **£80-120**

85



AN EXTENSIVE MINTON "DYNASTY" PATTERN PART TEA, COFFEE AND DINNER SERVICE An Extensive Minton "Dynasty" Pattern Part Tea, Coffee and Dinner Service, of one-hundred and twenty four pieces comprising fourteen 10" plates, six 9" plates, eleven 8" plates, eighteen 6" side plates, three sauce boat stands, large meat platter, two cake plates, twelve teacups, twelve 6" saucers, twelve 5.3" saucers, eight 5" saucers, twin-handled sugar bowl and another sugar bowl, two milk or cream jugs, one coffee pot, six coffee cups, ten twin-handled soup bowls, two tureens, and two oval serving bowls shallow and deep respectively. **£400-600**

Fine & Classic, 9th Jan, 2025 11:00

86



A CHINESE KANGXI PERIOD BLUE AND WHITE GINGER JAR A Chinese Kangxi Period Blue and White Ginger Jar, the shoulders with *ruyi* head border above repeated lotus flowers and stylised *shou* characters with lappet band to foot, double ring mark to base, on later carved and pierced hardwood stand.
(Dimensions: 17.5cm high) **£300-500**

87



A CHINESE BLUE AND WHITE "DRAGON" BOWL QING DYNASTY A Chinese Blue and White "Dragon" Bowl, circa 18th century, the exterior decorated with three stylised three-claw dragons beneath repeated *manji* and above band of lappets to base, the interior with band of waves to rim and a further stylised three-claw dragon to centre, "shop" mark to underside.
(Dimensions: 22cm diameter) **£80-120**

88



A RARE CHINESE CANTON ENAMEL TIBETAN-STYLE "MONK'S CAP" EWER (DUOMUHU, 多穆壶) QING DYNASTY, CIRCA 18TH/19TH CENTURY A Rare Chinese Canton Enamel Tibetan-Style "Monk's Cap" Ewer (*Duomuhu*, 多穆壶), copper-bodied, profusely decorated with peonies, pomegranates and butterflies amongst vines against a stippled blue ground between yellow bands further decorated with lotus flowers and scrolled vines, the spout with partial dragon's head embellished with *ruyi* fungus in yellow to lower section, the handle comprised of metal spheres connected by chain links, unmarked.
(Dimensions: 46.5cm high) **£800-1,200**

89



A COLLECTION OF 18TH CENTURY AND LATER CHINESE IMARI EXPORT "RICE GRAIN" WARE A Collection of 18th Century and Later Chinese Imari Export "Rice Grain" Ware, comprising a set of three larger bowls and one similarly sized single, a set of three stem bowls, a pair of stands and a single stand, a set of eight saucers and a further set of three saucers, two teabowls (these 20th century), a set of six serving spoons and a single spoon (this also 20th century), all inset with rice grains and decorated in underglaze blue with auspicious and Buddhist symbols, stylised patterns and sprays, further embellished in enamels and gilt, variously marked with apocryphal Kangxi or other four-characters marks, some including the stands unmarked. **£150-250**

90



Fine & Classic, 9th Jan, 2025 11:00

A LARGE CHINESE "CRACKED ICE" BALUSTER VASE A Large Chinese "Cracked Ice" Baluster Vase, late Qing, with faux-bronze twin handles and bands, painted in underglaze blue with birds amongst sprays of peonies, chrysanthemum, pomegranates and lillies, four-character seal mark in oracle bone script to base.
(Dimensions: 56cm high) **£100-150**

93



91



A GOOD AND LARGE TIBETAN "PROPHECY OF SHAMBHALA" THANGKA A Good and Large Tibetan "Prophecy of Shambhala" Thangka, circa 18th/19th century, gouache on fabric, depicting the city of Kalapa being successfully defended by its last king, Rudrachakrin, against the barbarian invaders, marking the beginning of the final Golden Age, framed.
(Dimensions: The image 98cm x 89cm) **£300-500**

THREE PIECES OF CHINESE QIANLONG PERIOD NANKING CARGO PORCELAIN Three Pieces of Chinese Qianlong Period Nanking Cargo Porcelain, all circa 1750, comprising a bowl, teabowl and saucer, all decorated with pine trees, the larger with scholar crossing a bridge in garden landscape, the bowl and saucer retaining Christie's *Nanking Cargo* label for lot nos. 2752 and 5519 respectively.
(Dimensions: The larger bowl 18.5cm diameter) **£100-200**

94



92



A TIBETAN BUDDHIST "BHAVACHAKRA" MANDALA THANGKA A Tibetan Buddhist "Bhavachakra" Mandala Thangka, circa late 19th/early 20th century, gouache on fabric, depicting Yama (God of the Underworld) holding the Wheel of Life with the Three Poisons (*kleshas*) to the centre, then *Karma*, the Six Realms of *Samsara*, the Twelve *Nidanas* and, outside of the Wheel, *Nirvana*, set in a silk surround with yellow border on purple ground; bears three Tibetan characters and small detail of a shrine verso.
(Dimensions: The image 45 x 31.8cm, 90 x 56.5cm overall) **£50-80**

A LARGE CHINESE BRONZE AND CHAMPLEVE ENAMEL BOWL OR PLANTER QING DYNASTY A Large Chinese Bronze and Champleve Enamel Bowl or Planter, circa 19th century, decorated with blossoming flower heads amongst scrolled vines, unmarked.
(Dimensions: 24.5cm high, the rim 28cm external diameter) **£100-200**

95



Buyer's Premium of 25% +VAT on each lot

Fine & Classic, 9th Jan, 2025 11:00

96

A SMALL CHINESE FLAMBE GLAZED YUHUCHUNPING QING DYNASTY A Small Chinese Flambe Glazed Yuhuchunping, circa 18th century, predominantly lavender toned with grey splashes and dark red spotting, the interior and base very pale celadon, unmarked.
(Dimensions: 12.5cm high) **£100-200**



TWO CHINESE MINIATURE MONOCHROME BOTTLE VASES QING DYNASTY Two Chinese Miniature Monochrome Bottle Vases, circa 18th century, likely Qianlong period, in green and blue glazes respectively, both unmarked, one bearing old label inscribed *Ch'ien Lung 1736-1795*.

(Dimensions: The slightly taller blue glazed vase 9cm high) **£80-120**

97



A CHINESE BLUE AND WHITE "LONGEVITY" GINGER JAR QING DYNASTY A Chinese Blue and White "Shou" Ginger Jar, circa 19th century, decorated with alternating stylised *shou* characters and panels of calligraphic script against prunus on cracked ice ground, double ring mark to base.

(Dimensions: 16cm high) **£60-100**

98



THREE CHINESE BLUE AND WHITE GINGER JARS Three Chinese Blue and White Ginger Jars, the smallest circa 18th/19th century and decorated with three figures in procession, one mounted on a qilin, the largest circa early 20th century and decorated "double happiness"

characters, the last of similar or later 20th century manufacture and decorated with bird amongst blossoming branches. **£60-100**

99



A CHINESE MINIATURE FAMILLE NOIRE BOTTLE VASE AND GE WARE-TYPE WINE BOWL QING DYNASTY A Chinese Miniature Famille Noire Bottle Vase and Ge Ware-Type Wine Bowl, both circa 18th/19th century, the vase decorated with a bird perched amongst blossoming prunus branches, the bowl with celadon tones to glaze, both unmarked.

(Dimensions: The vase 8.7cm high, the bowl 5.5cm diameter) **£60-100**

100



Fine & Classic, 9th Jan, 2025 11:00

AN 18TH CENTURY CHINESE "BOYS" PLATE
QING DYNASTY An 18th Century Chinese "Boys" Plate, decorated in underglaze blue with five boys playing a game of cups and balls against a patterned border with repeating bats and cash symbols, unmarked.
(Dimensions: 22cm diameter) **£50-80**

101



A MID-LATE 19TH CENTURY CHINESE "ROSE MEDALLION" VASE AND SAUCER
A Mid-Late 19th Century Chinese "Rose Medallion" Vase and Saucer, the vase of inverted form with twin moulded gilt Dog of Fo mask and rings to shoulders and typically decorated with figures and birds amongst blossoming branches, the saucer decorated in polychrome enamels with a folklore scene (possibly taken from the "Journey to the West") and bearing the presentation inscription *Dr D Young with Tang. Kah. Sheong's best compliments*, both unmarked.
(Dimensions: The vase 23.2cm high, the saucer 14.5cm diameter) **£50-80**

102



A SMALL CHINESE YELLOW GLAZED MONOCHROME BOTTLE VASE QING DYNASTY A Small Chinese Yellow Glazed Monochrome Bottle Vase, circa 18th/19th century, unmarked.
(Dimensions: 13.5cm high) **£50-80**

103



A JAPANESE EDO/MEIJI PERIOD MAKI-E LACQUER FOUR-CASE INRO A Japanese Edo/Meiji Period Maki-e Lacquer Four-Case Inro, 19th century, decorated in gold, silver and copper tones with pagoda, rooftops, pine trees and further stylised detail against *nashiji* gold ground repeated to interior, with original red cord and tassel, unmarked. **£300-500**

104



A LARGE JAPANESE "ARTS & CRAFTS" COPPER DOCUMENT BOX BY THE ANDO COMPANY A Large Japanese "Arts & Crafts" Copper Document Box by the Ando Company, early 20th century, with patinated finish and enamel detail of a lion dog (*komainu*) within border and floral motifs in relief to the cover, the interior with fabric lining, all corners with riveted detail and bearing Ando Company emblem with further three character mark to base.
(Dimensions: 33.5cm long, 26cm wide) **£100-200**

105



Fine & Classic, 9th Jan, 2025 11:00

A SMALL JAPANESE BRONZE AND MIXED METAL INLAID TRINKET BOX AND A LACQUERWARE BOX A Small Japanese Bronze and Mixed Metal Inlaid Trinket Box, circa mid-20th century, the cover decorated with pagoda and *torii* gate before Mt. Fuji, marked *K24*, together with a lacquerware box, the fitted cover decorated with three stylised cranes. (Dimensions: The smaller box 6cm wide) **£50-80**

108



A PAIR OF JAPANESE BLUE AND WHITE "CRACKED ICE" VASES A Pair of Japanese Blue and White "Cracked Ice" Vases, circa late 19th/early 20th century, of ovoid form and decorated in the Chinese taste with prunus or cherry blossom on "cracked ice" ground, unmarked. (Dimensions: 21cm high) **£50-80**

106



A JAPANESE MEIJI PERIOD BRONZE AND MIXED METAL VASE BY K. KURODA OF KYOTO A Japanese Meiji Period Bronze and Mixed Metal Vase by K. Kuroda of Kyoto, circa 1900, featuring a rooster perched on a blossoming cherry blossom tree in gold, silver and copper, signed *Kyoto Kuroda zou* (京都黒田造) to base with further three character mark to lower body, this possibly for either workshop artist Mitsunobo or Mitsutoshi. (Dimensions: 15.5cm high) **£80-120**

109



A JAPANESE SATSUMA GOURD VASE AND CIRCULAR BOX WITH COVER A Japanese Satsuma Gourd Vase and Circular Box with Cover, late Meiji/Taisho, both decorated with figures, the vase with further floral sprays, the box with floral sprays to body and cover interior, single character to vase base, otherwise unmarked. (Dimensions: The vase 12cm high, the box 9cm diameter) **£40-60**

107



A GROUP OF FIVE JAPANESE WOODBLOCK PRINTS A Group of Five Japanese Woodblock Prints, comprising *The Tale of Kode Kashiwa, Volume 12: Danjo Niki and Arashi Otonosuke* after Utagawa Kunisada (or Toyokuni III), three first edition Noh Theatre Series prints by Akitoyo Terada, all circa 1950s, comprising *Dojoji*, *Yuya* and *Kurama-Tengu*, also a 20th century reproduction of *Rokusozan in Kazusa Province* after Hiroshige, all framed. (Dimensions: The first and largest 36cm x 24cm) **£50-80**

110



Fine & Classic, 9th Jan, 2025 11:00

TWO PIECES OF JAPANESE SATSUMA WARE Two Pieces of Japanese Satsuma Ware, both circa late 19th/early 20th century, the smaller a scent bottle decorated with imperial court scenes against a gilt and enamelled ground, the cover associated, the larger a vessel modelled as a pot and decorated with blossoming chrysanthemum, retaining original cover.

(Dimensions: The latter 10.5cm high) **£40-60**

113



111



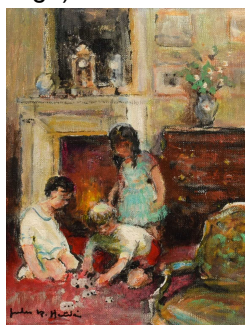
A THAI PARCEL GILT HOLLOW-CAST BRONZE BUDDHA A Thai Parcel Gilt Hollow-Cast Bronze Buddha, circa 16th century, Kamphaeng Phet-style, seated in Bhumisparsha Mudra ("Calling the Earth to Witness" or "Earth Touching") on partial lotus base, displayed on later stand.

(Dimensions: The figure 29cm high, 17cm wide) **£400-600**

AN AUSTRALIAN ABORIGINAL COOLAMON OR YANDI VESSEL An Australian Aboriginal Coolamon or Yandi Vessel, early/mid-20th century, moulded and adzed.

(Dimensions: 49cm long, 19cm wide, 12.3cm high) **£40-60**

114



§ JULES RENE HERVE (FRENCH 1887-1981) "JEUX D'ENFANTS" Signed, titled on verso, oil on canvas.

(Dimensions: 25.5 x 20.5cm (framed 45 x 40cm))

Artists' Resale Right ("droit de suite") may apply to this lot. £200-300

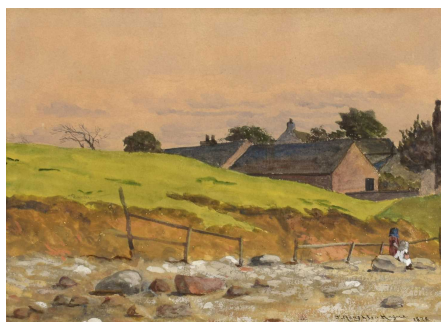
112



A JAVANESE MAJAHAPIT-TYPE SECTIONAL STONE STELE RELIEF CARVED FRIEZE A Javanese Majahapit-Type Sectional Stone Stele Relief Carved Frieze, depicting a processional or ritual scene, set in a modern display frame on stand.

(Dimensions: The frieze 57cm x 58.5cm, 76cm high overall) **£200-400**

115

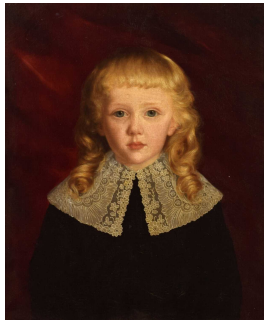


JOHN HOUGHTON HAGUE (BRITISH 1842-1934) RURAL SCENE WITH TWO CHILDREN Signed and dated 1878, watercolour.

(Dimensions: 17.5 x 24.5cm (framed 35.5 x 42.5cm)) **£80-120**

Fine & Classic, 9th Jan, 2025 11:00

116



CONTINENTAL SCHOOL (17TH CENTURY STYLE) PORTRAIT OF A BOY Unsigned, oil on canvas.
(Dimensions: 53 x 43cm (framed 70 x 60.5cm))
£300-500

117



ANTHONY VANDYKE COPLEY FIELDING (BRITISH 1787-1855) "ARUNDEL CASTLE, SUSSEX" Signed, titled on verso, oil on canvas.
(Dimensions: 27.5 x 40.5cm (framed 37 x 49.5cm)) **£300-500**

118



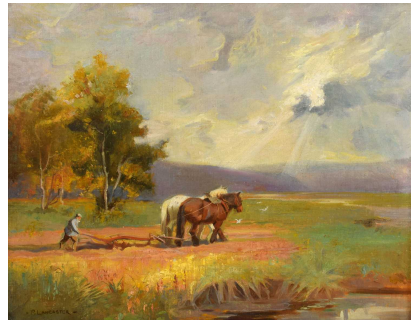
DAVID COX (BRITISH 1783-1859) "HARBOUR TOWN" Signed and dated 1829, watercolour.
(Dimensions: 23 x 38.5cm (framed 49 x 59cm))
£200-400

119



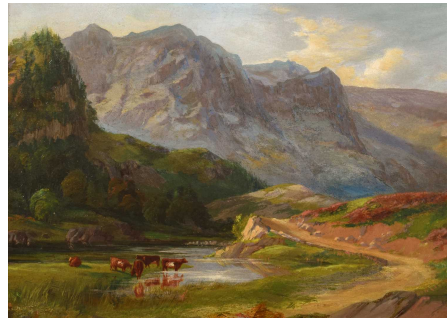
CONTINENTAL SCHOOL (20TH CENTURY) A MALE PORTRAIT AND "A TEMPLE GIRL" (2) Unsigned, the second work is titled on verso, mixed media.
(Dimensions: 40.5 x 30.5 cm (54.5 x 44cm) and 40 x 30cm (54 x 43.5cm))
Exhibited: *Salon*, Société des Artistes Français, 1961 **£200-400**

120



PERCY LANCASTER R.I., R.B.A., A.R.E., R.C.A.M.A. (BRITISH 1878-1951) "A PLOUGHING TEAM" Signed, titled on gallery label verso, oil on canvas.
(Dimensions: 38.5 x 49.5cm (framed 58cm x 69cm)) **£200-400**

121



WILLIAM LAKIN TURNER (BRITISH 1867-1936) RURAL LANDSCAPE WITH MOUNTAINS Unsigned, dated 1900 on verso, oil on board.
(Dimensions: 29 x 41cm (framed 35 x 47.5cm))
£200-400

Fine & Classic, 9th Jan, 2025 11:00

122



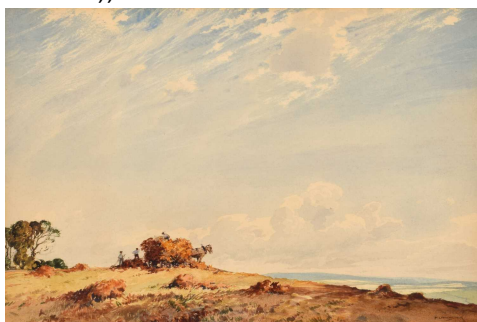
ARTHUR WASSE (BRITISH 1854-1930) "FEEDING THE PIGEONS" Signed and dated 1881, oil on canvas. (Dimensions: 59 x 81cm (framed 67 x 89cm)) **£200-400**

123



FREDERICK JAMES ELLIOTT (BRITISH 1864-1949) "LEAVING HARBOUR" Signed, watercolour. (Dimensions: 26 x 39.5cm (framed 50.5 x 62.5cm)) **£150-200**

124



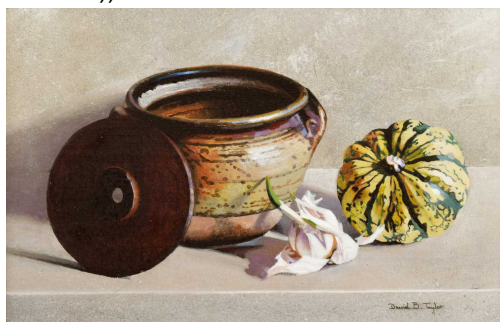
PERCY LANCASTER R.I., R.B.A., A.R.E., R.CAM.A. (BRITISH 1878-1951) HAYMAKING SCENE Signed and dated '22, watercolour. (Dimensions: 33 x 49.5cm (framed 56.5 x 71.5cm)) **£150-200**

125



ROBERT D. BEATTIE (BRITISH 20TH CENTURY) "STACKING TURF TO DOWN" AND "A BIT OF CRACK" Both signed, titled and dated 1910, oval, watercolours (2). (Dimensions: 20.5 x 30.5cm (framed 34.5 x 44.5cm)) **£150-250**

126



DAVID B. TAYLOR (BRITISH 20TH/21ST CENTURY) "TWO FOR THE POT" Signed, titled on artist's label verso, acrylic on board. (Dimensions: 14.5 x 23cm (framed 31 x 39cm)) **£150-250**

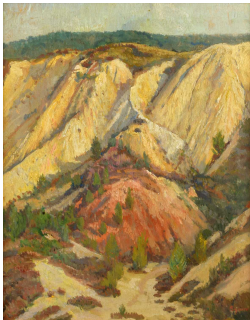
127



JOHN ABERNETHY LYNAS-GRAY (BRITISH 1869-1940) "BETWIXT THE LIGHTS, VENICE" Signed and dated 1922, titled on verso, watercolour. (Dimensions: 30 x 45.5cm (framed 45.5 x 61cm)) **£100-200**

Fine & Classic, 9th Jan, 2025 11:00

128



§ HAROLD SQUIRE (CHILEAN/BRITISH 1881-1959) "OLD WORKINGS" Signed and dated 1923, titled on artist's label verso, oil on board. (Dimensions: 39.5 x 32cm (framed 61 x 53.5cm))

Artists' Resale Right ("droit de suite") may apply to this lot. £100-150

129

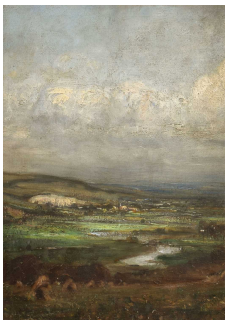


§ CECIL HUNT (BRITISH 1873-1965) "THE GRANITE QUARRY" Signed, titled on label verso, gouache.

(Dimensions: 39 x 51.5cm (framed 60.5 x 73cm))

Artists' Resale Right ("droit de suite") may apply to this lot. £100-200

130



EMILY BEATRICE BLAND (BRITISH 1864-1951) IRISH ESTUARY SCENE Signed on removed section of canvas attached to verso, oil on canvas.

(Dimensions: 43.5 x 30.5cm (framed 62 x 48cm)) £100-200

131



Withdrawn

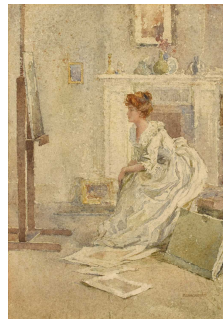
132



ARTHUR G. BELL (BRITISH 1849-1916) "A DEVONSHIRE FARM" Signed, titled on gilt mount board, watercolour.

(Dimensions: 31 x 40.5cm (51.5 x 60.5cm)) £100-200

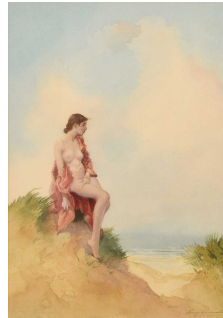
133



PERCY LANCASTER R.I., R.B.A., A.R.E., R.CAM.A. (BRITISH 1878-1951) "THE CRITIC" Signed and dated '16, titled and further dated 12.12. on artist's label verso, watercolour.

(Dimensions: 33 x 23.5cm (framed 52 x 40cm)) Exhibited: *Eleventh Annual Autumn Exhibition*, Southgate Gallery, 1981 £100-200

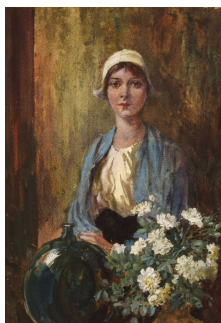
134



Fine & Classic, 9th Jan, 2025 11:00

**PERCY LANCASTER R.I., R.B.A., A.R.E.,
R.CAM.A. (BRITISH 1878-1951) FEMALE
NUDE ON A BEACH** Signed and dated '40,
watercolour.
(Dimensions: 32 x 23cm (framed 50.5 x 40cm))
£100-200

135



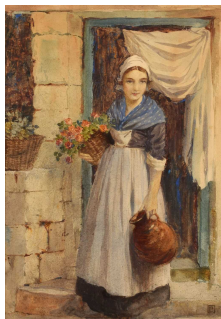
**PERCY LANCASTER R.I., R.B.A., A.R.E.,
R.CAM.A. (BRITISH 1878-1951) "THE BLUE
SHAWL"** Unsigned, titled on label within the
mount board, watercolour.
(Dimensions: 33 x 23cm (framed 50.5 x
40.5cm)) **£100-150**

136



**PERCY LANCASTER R.I., R.B.A., A.R.E.,
R.CAM.A. (BRITISH 1878-1951) SEATED
FLOWER SELLER** Monogrammed, watercolour.
(Dimensions: 23.5 x 33.5cm (framed 44 x
56.5cm)) **£100-150**

137



**PERCY LANCASTER R.I., R.B.A., A.R.E.,
R.CAM.A. (BRITISH 1878-1951) "EXTERIOR
WITH FIGURE & FLOWERS"** Monogrammed,
titled on verso, watercolour.
(Dimensions: 48.5 x 33.5cm (framed 69 x
53cm)) **£100-200**

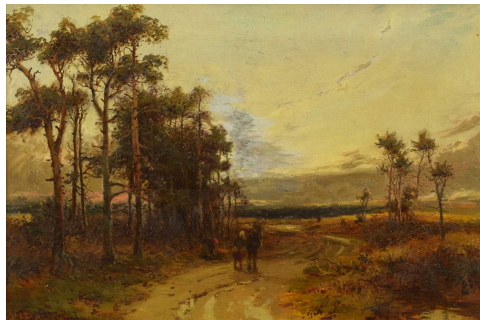
138



**§ MAX HOFER (BRITISH 1892-1963)
"EVENING, BERKSHIRE FARM"** Signed, titled
on artist's label verso, oil on board.
(Dimensions: 49.5 x 60cm (framed 59 x
69.5cm))

**Artists' Resale Right ("droit de suite") may apply
to this lot. £100-200**

139



**WILLIAM MANNERS (BRITISH 1860-1930)
"GATHERING WOOD AT DUSK"** Signed and
dated 1927, titled on label verso, oil on canvas.
(Dimensions: 29 x 44.5cm (framed 49 x
64.5cm)) **£100-200**

140



**ENGLISH SCHOOL (19TH CENTURY) RURAL
SCENE WITH CATTLE** Initialed A. G. and
dated 1854, oil on canvas.
(Dimensions: 29 x 44cm (framed 47.5 x 63cm))
£100-200

Fine & Classic, 9th Jan, 2025 11:00

141



§ GORDON ELLIS (BRITISH 1921-1979) "AN EAST INDIAMAN IN A FRESH BREEZE" Signed, titled on label verso, oil on board. (Dimensions: 37 x 49.5cm (framed 47 x 59.5cm))
Artists' Resale Right ("droit de suite") may apply to this lot. £80-120

142



ENGLISH SCHOOL (19TH CENTURY) "BENI HASSAN" Initialed F. D., titled and dated 1st December 1854, watercolour. (Dimensions: 24.5 x 37.5cm (framed 40 x 52cm)) **£80-120**

143



PERCY LANCASTER R.I., R.B.A., A.R.E., R.CAM.A. (BRITISH 1878-1951) "A FARM NEAR SETTLE" Signed and dated '28, titled on mount board, watercolour. (Dimensions: 23.5 x 34.5cm (framed 42 x 50.5cm)) **£80-120**

144



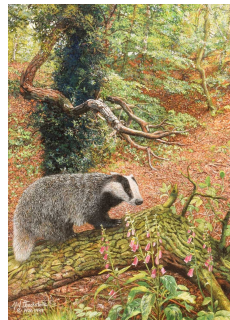
WILFRID BAILEY (BRITISH 1800-1900) "MALLARDS OVER MALHAM TARN" Signed, titled on label verso, oil on canvas. (Dimensions: 49.5 x 75cm (framed 65.5 x 91cm)) **£80-120**

145



W. BARROWS (BRITISH 20TH/21ST CENTURY) "ULVERSCROFT PRIORY, LEICESTERSHIRE" Signed and dated 1927, titled on verso, watercolour. (Dimensions: 25.5 x 48cm (framed 44 x 66cm)) **£80-120**

146



M. N. THACKSTONE (BRITISH 20TH CENTURY) BADGER Signed and dated August 1993, oil on canvas. (Dimensions: 39 x 29cm (framed 52.5 x 42cm)) **£50-100**

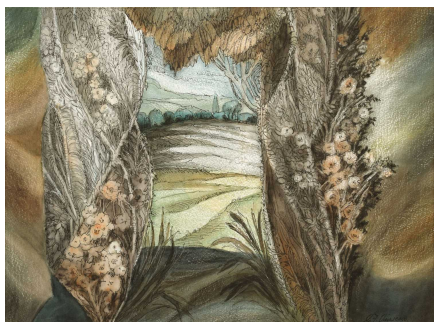
Fine & Classic, 9th Jan, 2025 11:00

147



§ **GEORGE AINSCOW (BRITISH 1913-2013)**
"APPLES WITH OPEN BOOK" Signed and dated 1989, titled on artist's label verso, watercolour and ink.
(Dimensions: 32 x 43.5cm (framed 57 x 67.5cm))
Artists' Resale Right ("droit de suite") may apply to this lot. £50-100

148



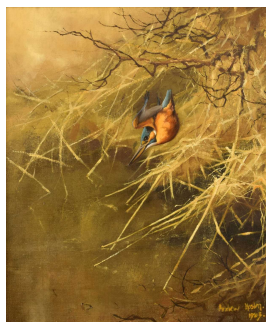
§ **GEORGE AINSCOW (BRITISH 1913-2013)**
"LANDSCAPE WITH TREE FORMS" Signed and dated 1986, titled on artist's label verso, watercolour and ink.
(Dimensions: 33 x 44.5cm (framed 55 x 65.5cm))
Artists' Resale Right ("droit de suite") may apply to this lot. £50-100

149



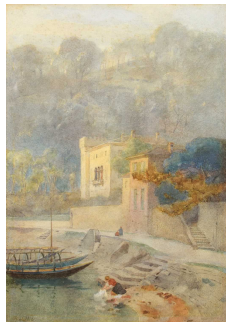
§ **GEORGE AINSCOW (BRITISH 1913-2013)**
"GARDEN THEME" Signed and dated 1986, titled on artist's label verso, watercolour and ink.
(Dimensions: 32 x 40cm (framed 54.5 x 61.5cm))
Artists' Resale Right ("droit de suite") may apply to this lot. £50-100

150



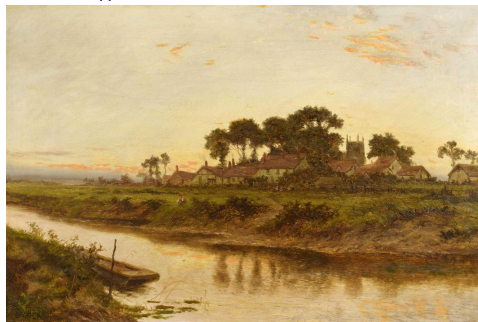
§ **ANDREW HASLEN (BRITISH 1953-)** "DIVING KINGFISHER" Signed and dated 1983, titled on artist's label verso, oil on canvas.
(Dimensions: 39.5 x 34.5cm (framed 47.5 x 42.5cm))
Artists' Resale Right ("droit de suite") may apply to this lot. £50-100

151



ROBERT W. LITTLE R.W.S. (BRITISH 1854-1944) "BALBIONELLO" Signed, titled and dated '89 on verso, watercolour.
(Dimensions: 38 x 27cm (framed 51.5 x 41.5cm)) **£50-100**

152



DANIEL SHERRIN (BRITISH 1868-1940)
"RIVER SCENE WITH PUNT" Signed, oil on canvas.
(Dimensions: 49.5 x 75cm (framed 59.5 x 85cm)) **£200-400**

Fine & Classic, 9th Jan, 2025 11:00

153



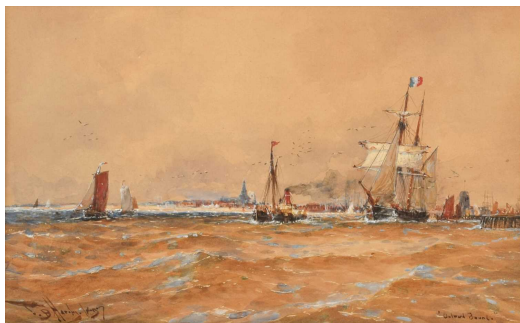
CHARLES ROWBOTHAM (BRITISH 1856-1921) ITALIAN LAKES Signed and dated 1889, watercolour.
(Dimensions: 25.5 x 60cm (framed 44 x 79.5cm)) **£200-400**

154



THOMAS BUSH HARDY (BRITISH 1842-1897) "CALAIS FISH PIER" Unsigned, titled on verso, watercolour.
(Dimensions: 23 x 33cm (framed 52 x 62.5cm)) **£200-400**

155



THOMAS BUSH HARDY (BRITISH 1842-1897) "OUTWARD BOUND" Signed, titled and dated 1897, watercolour.
(Dimensions: 21 x 34.5cm (framed 50.5 x 63.5cm)) **£200-400**

156



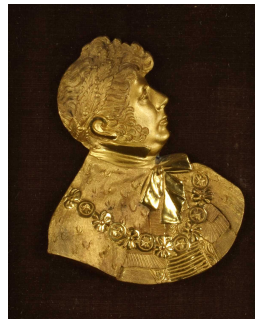
§ GEORGE AINSCOW (BRITISH 1913-2013) "HILL TOWN IN TUSCANY" Signed and dated 1993, titled on artist's label verso, watercolour and ink.
(Dimensions: 36.5 x 51cm (framed 56 x 70.5cm))
Artists' Resale Right ("droit de suite") may apply to this lot. £50-100

157



ATTRIBUTED TO RICHARD COSWAY R.A. (BRITISH 1742-1821) AN OVAL PORTRAIT MINIATURE OF A MILITARY OFFICER
Unsigned, watercolour on ivory, in gilt metal frame with glazed blue silk panel on verso.
(GOV.UK self-declaration form completed for the sale of this item - Submission reference Z84GEEN1)
(Dimensions: 6.5 x 5.5cm)
Private Collection, UK. **£300-500**

158



Fine & Classic, 9th Jan, 2025 11:00

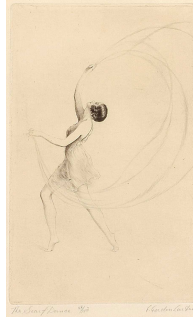
A 19TH CENTURY GILT METAL PROFILE PORTRAIT PLAQUE OF GEORGE IV. A 19th century gilt metal profile portrait plaque of George IV, mounted within a mahogany frame. (Dimensions: 12 x 9.5cm (framed 20 x 17.5cm)) **£80-120**

159



WILLIAM LEE HANKEY (BRITISH 1869-1952) "TRAGÉDIENNE" Initialled in the plate and signed in pencil in the margin, with artist's blind stamp, etching. (Dimensions: 30 x 24cm (framed 45.5 x 38.5cm)) **£50-100**

162



ENGLISH SCHOOL (EARLY 19TH CENTURY) TWO PORTRAITS OF GENTLEMAN Both unsigned, oval, watercolour on paper, in ebonised frames with gilt metal surrounds (2). (Dimensions: 9 x 7cm (framed 16.5 x 14cm) 8 x 7cm (framed 14 x 11.5cm)) **£50-100**

160



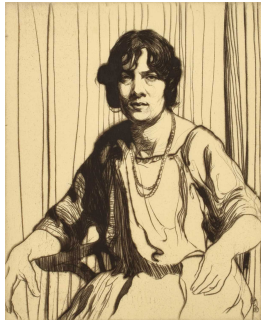
E. GORDON CARTER (BRITISH 20TH CENTURY) "THE SCARF DANCE" Signed, titled and numbered 22/100 in pencil in the margin, etching. (Dimensions: 22.5 x 14cm (framed 51.5 x 36cm)) **£50-100**

163



FOLLOWER OF WILLIAM HOARE OF BATH (BRITISH 1707-1792) "PORTRAIT OF SAMUEL WARREN, SOLICITOR OF MINEHEAD, SOMERSET" Unsigned, titled on label verso, pastel. (Dimensions: 54.5 x 42cm (framed 64 x 51.5cm)) **£100-200**

161



PERCY LANCASTER R.I., R.B.A., A.R.E., R.CAM.A. (BRITISH 1878-1951) THE ANTIQUES SHOP Signed and numbered 1/50 in pencil in the margin, monogrammed within the plate, etching. (Dimensions: image size 20.5 x 25.5cm (framed 46.5 x 55.5cm)) **£50-100**

164



Fine & Classic, 9th Jan, 2025 11:00

PERCY LANCASTER R.I., R.B.A., A.R.E., R.CAM.A. (BRITISH 1878-1951) TWO FIGURE GROUPS AT CHURCH (2) Both signed and numbered 26/30 and 20 respectively in pencil in the margin, etchings (2).
(Dimensions: image sizes 18.5 x 23cm (framed 44 x 50.5cm) and 22.5 x 33cm (framed 48 x 60.5cm)) **£80-120**

167



A 20TH CENTURY CAUCASIAN RUG A 20th Century Caucasian Rug, possibly Kazak, bearing scroll and star motifs on a navy and dark salmon ground.
(Dimensions: 198cm x 125cm) **£60-100**

165



HENRICUS HONDIUS, MAP OF THE WORLD, CIRCA 1630. World. Hondius (Henricus), *Nova totius Terrarum Orbis Geographica ac Hydrographica Tabula*. Auct: Henr. Hondio. Amsterdam, circa 1630, hand-coloured engraved map of the world on a hemispherical projection, the borders decorated with allegorical representations of the four elements and four portrait medallions of Caesar, Ptolemy, Mercator and Jodocus Hondius.
(Dimensions: 39 x 55cm (framed 53.5 x 69cm)) **£1,000-1,500**

168



A LATE 20TH CENTURY SHIRAZ RUG A Late 20th Century Shiraz Rug, with repeated geometric detail on red ground.
(Dimensions: 170cm long, 111cm wide) **£60-100**

166



SAXTON, MID-17TH CENTURY MAP OF CORNWALL, 29X39CM. Cornwall. Saxton (Christopher & Kip William) *Cornwall olim pars Danmoniorum*, 1637, hand-coloured engraved map, large inset vignette of Launceston Castle.
(Dimensions: 32 x 38.5cm (framed 41 x 48cm)) **£80-120**

169



AN EARLY 20TH CENTURY TURKOMEN RUG An Early 20th Century Turkomen Rug, circa 1920s, hand-woven with fine detail of repeated lozenge guls within geometric borders all on red ground.
(Dimensions: 172cm x 125cm)
Private collection, Cheshire. **£200-400**

Fine & Classic, 9th Jan, 2025 11:00

170



A FINE EARLY 20TH CENTURY KASHAN SILK RUG A Fine Early 20th Century Kashan Silk Rug, circa 1900-1910, hand-woven with symmetrical design featuring central gül and profuse detail of flowers and urns within ivory columns on salmon ground, the outer sections with borders of further floral and repeated geometric motifs, signed within cartouche to one end.

(Dimensions: 204cm long, 133cm wide)
Private collection, Cheshire. **£500-800**

171



A GOOD LATE 19TH CENTURY SHIRVAN (CAUCASUS) RUG A Good Late 19th Century Shirvan (Caucasus) Rug, circa 1890-1900, hand-woven with repeated ram's horns, fantailed birds and octagonal güls against a navy ground within Kufic border.

(Dimensions: 166 x 103cm)
Private collection, Cheshire. **£1,000-1,500**

172



A PAIR OF 19TH CENTURY CHINESE ELM "KANG" CHAIRS A Pair of 19th Century Chinese Elm "Kang" Chairs, partially stained or lacquered, with shaped splats to rectangular seats above shaped front apron and brackets bearing stylised carved detail, the splayed stretched supports with front footrests.

(Dimensions: 43.5cm wide, 36cm deep, 78cm high)
A "Kang" chair was placed over a stove for warmth in provincial China, these purchased from the Yingguoren Gallery, Islington, London. **£80-120**

Buyer's Premium of 25% +VAT on each lot

A 19TH CENTURY CHINESE STAINED ELM ALTAR TABLE A 19th Century Chinese Stained Elm Altar Table, with shaped raised ends and raised on stretched circular supports.
(Dimensions: 192cm wide, 43cm deep, 84cm high)
Purchased from Yingguoren Gallery, Islington, London. **£200-400**

173



A GOOD PAIR OF 19TH CENTURY CHINESE "YOKE" BACK ELM ARMCHAIRS A Good Pair of 19th Century Chinese "Yoke" Back Elm Armchairs, partially stained or lacquered, the toprails with carved brackets above a shaped single plank splat to panelled rectangular seats with shaped arms, raised on slightly splayed supports with turned stretchers and front footrests.

(Dimensions: 60cm wide, 48cm deep, 120.5cm high)
Purchased from Yingguoren Gallery, Islington, London. **£200-400**

174



Fine & Classic, 9th Jan, 2025 11:00

175



A LATE VICTORIAN MAHOGANY EASEL A Late Victorian Mahogany Easel, with pierced pediment and adjustable platform, the lower section with turned spindles and raised on four swept supports.
(Dimensions: 52cm wide, 41cm deep, 131.5cm high) **£100-200**

176



A LATE VICTORIAN OR EDWARDIAN ROSEWOOD AND MARQUETRY SIDE CABINET A Late Victorian or Edwardian Rosewood and Marquetry Side Cabinet, the upper-stage with mirrored back above single frieze drawer to panelled and mirrored door enclosing three shelves, raised on tapered boxwood or satinwood strung supports terminating on casots.
(Dimensions: 56.5cm wide, 39cm deep, 138cm high) **£50-100**

177



AN EARLY 20TH CENTURY OAK STACKING BOOKCASE IN THE STYLE OF GLOBE-WERNICKE An Early 20th Century Oak Stacking Bookcase, of four main sections each with drop-down glazed door beneath separate stepped cornice section and raised on separate base, bearing paper label for the offices of the Manchester Pantechnicon.
(Dimensions: 86.5cm wide, 45.5cm deep, 163.5cm high) **£100-150**

178



A VICTORIAN BURR WALNUT MUSIC CABINET A Victorian Burr Walnut Music Cabinet, amboyna cross-banded and strung with boxwood and ebony, the galleried top above glazed door enclosing three labelled shelves and three divisions, further gilt highlighted with beaded detail and raised on short knopped feet.
(Dimensions: 56.5cm wide, 40cm deep, 105cm high) **£100-200**

179



A SMALL GEORGE III MAHOGANY CHEST OF DRAWERS A Small George III Mahogany Chest of Drawers, the moulded top above two short and three graduated long drawers, raised on bracket feet.
(Dimensions: 75cm wide, 43cm deep, 79cm high) **£250-350**

Fine & Classic, 9th Jan, 2025 11:00

180



A GEORGE III OAK AND MAHOGANY CROSS-BANDED CHEST A George III Oak and Mahogany Cross-Banded Chest, the moulded top above an arrangement of two short over three long drawers flanked by quarter-turned fluted column pilasters, the top front and drawer corners all further inlaid, raised on bracket feet. (Dimensions: 108cm wide, 53cm deep, 97.5cm high) **£100-200**

181



A GEORGE III OAK CHEST OF FOUR GRADUATED DRAWERS A George III Oak Chest of Four Graduated Drawers, with moulded top and brass swan-neck handles, raised on ogee bracket feet. (Dimensions: 83cm wide, 47.5cm deep, 83.5cm high) **£80-120**

182



184



183



A GOOD VICTORIAN ROSEWOOD DINING TABLE AND A SET OF SIX BALLOON-BACK DINING CHAIRS A Good Victorian Rosewood Dining Table, the oval top raised on tapered octagonal column to foliate carved and knopped quadripartite base terminating in acanthus carved swept and scrolled supports to brass castors, accompanied by a set of six Victorian rosewood balloon-back dining chairs each with drop-in cream upholstered seat and raised on tapered and fluted front supports terminating in knops and shaped peg feet. (Dimensions: The table 74cm high, the top 153cm long and 114cm wide; the chairs 88cm high, the seats 47cm wide and 40cm deep) **£200-400**

Fine & Classic, 9th Jan, 2025 11:00

AN EDWARDIAN MAHOGANY SPIDER-LEG OCCASIONAL TABLE An Edwardian Mahogany Spider-Leg Occasional Table, drop-leaf with gate-leg action on eight slender ring-turned and block supports.

(Dimensions: 23cm wide unextended, 66.5cm extended, 60cm long, 69cm high) **£60-100**

185



A 19TH CENTURY AND LATER MAHOGANY OCCASIONAL TABLE A 19th Century and Later Mahogany Occasional Table, the likely associated octagonal top stamped no. 9273

19544 to underside, raised on ring-turned column to four ebony-strung swept supports terminating in brass caps and castors. (Dimensions: 92cm long, 63cm wide, 71.5cm high) **£40-60**

186



A VICTORIAN MAHOGANY FRAMED CORNER CHAIR A Victorian Mahogany Framed Corner Chair, with "Chesterfield" arms, horsehair stuffed gold and cream upholstery, raised on four carved and tapered supports to brass castors.

(Dimensions: 90cm wide, 80cm deep, 77cm high) **£80-120**

187



A GROUP OF THREE 19TH CENTURY PROVINCIAL WINDSOR ARMCHAIRS A Group of Three 19th Century Provincial Windsor Chairs, the smallest yew- and the two larger ash-framed, the largest with stained finish, all with shaped elm seats and pierced splat backs,

two with crinoline stretchers and all on turned supports.

(Dimensions: The largest 59cm wide, 108.5cm high) **£80-120**

188



A PAIR OF 19TH CENTURY MAHOGANY DINING OR SIDE CHAIRS A Pair of 19th Century Mahogany Dining or Side Chairs, with turned and scrolled rails, raised on elaborately turned front supports with similarly turned "H" stretchers and terminating on wooden castors, upholstered in red velvet.

(Dimensions: 98cm high, the seats 41cm deep) **£40-60**

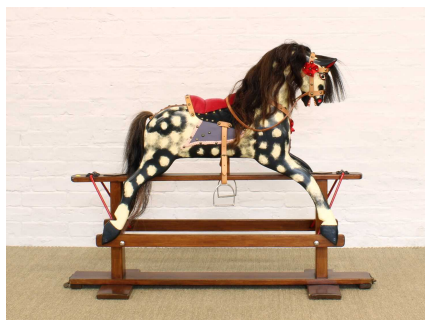
189



Fine & Classic, 9th Jan, 2025 11:00

A GOOD AND LARGE VICTORIAN BRASS CLUB FENDER A Good and Large Victorian Brass Club Fender, 6ft internal width, the seats recovered in stitched chocolate leather. (Dimensions: 208cm wide overall, 80cm deep, 54.5cm high) **£1,800-2,000**

192



AN EARLY 20TH CENTURY ROCKING HORSE ATTRIBUTED TO J. COLLINSON & SONS OF LIVERPOOL An Early 20th Century Rocking Horse Attributed to J. Collinson & Sons of Liverpool, with horsehair mane and tail, raised on trestle base.

(Dimensions: 122cm long, 40cm wide, 100cm high)

Possibly ex-Bagnor Manor, we are unable to verify this. **£100-200**

190



A FRENCH LOUIS XV-STYLE ROCOCO REVIVAL ORMOLU CHANDELIER A French Louis XV-Style Rococo Revival Ormolu Chandelier, circa late 19th/early 20th century, gilt bronze with cast foliate scroll detail throughout, the four shaped branches terminating in floral sconces and set with cast pendant, drilled and wired for electricity, with large and likely original ceiling rose and a further likely associated smaller rose. (Dimensions: The light 56cm high, 32cm wide) **£200-400**

193



A LARGE AND IMPRESSIVE LATE 19TH/EARLY 20TH CENTURY BLACK FOREST BEAR A Large and Impressive Late 19th/Early 20th Century Black Forest Bear, carved in lindenwood and modelled four-square, set with glass eyes.

(Dimensions: 115cm long, 80cm high, 33cm wide)

Private collection, Cheshire. **£1,500-2,000**

191



ART DECO STYLE THREE BRANCH CHROMED CEILING LIGHT Each bayonet fixture above a turned pendant, hexagonal central column above stepped lower section and knopped pendant, suspended from a chain. (Dimensions: 46cm long excluding chain suspension) **£40-60**

194



Fine & Classic, 9th Jan, 2025 11:00

A GOOD LATE 19TH/EARLY 20TH CENTURY BLACK FOREST BEAR STOOL A Good Late 19th/Early 20th Century Black Forest Bear Stool, in carved lindenwood and modelled hugging a tree trunk, the bear set with glass eyes, mounted with polished circular fixed seat.

(Dimensions: 52.5cm high, the seat 31cm diameter)

Private collection, Cheshire. **£1,500-2,500**

195



A TAXIDERMY AFRICAN LIONESS HEAD MOUNT A Taxidermy African Lioness Head Mount, *Panthera leo*, circa early 20th century, on oak shield.

(Dimensions: 33cm high, 31cm wide, 37.5cm deep)

Private collection, Cheshire.

We have been advised by CITES directly that this item does not require a certificate but be aware that this lot will require an export and import licence to be sold outside of the UK, this will be the responsibility of any successful buyer. **£300-500**

197



AN IMPRESSIVE TAXIDERMY BENGAL TIGER HEAD MOUNT In the Manner of Rowland Ward An Impressive Taxidermy Bengal Tiger Head Mount, *Panthera tigris tigris*, circa late 19th/early 20th century, unmarked, on a carved and stained shield board.

(Dimensions: 50cm high, 52cm wide, 39.5cm deep (all including board))

Private collection, Cheshire.

CITES - Annex A, Appendix I (exempt); please be aware that this lot will require an export and import licence to be sold outside of the UK, this will be the responsibility of any successful buyer. **£500-1,000**

196



A TAXIDERMY INDIAN LEOPARD HEAD MOUNT In the Manner of Rowland Ward A Taxidermy Indian Leopard Head Mount, *Panthera pardus fusca*, circa early 20th century, on a mahogany shield board.

(Dimensions: 23cm wide, 28cm high, 26.5cm deep (all including board))

Private collection, Cheshire.

Cites Annex A, Appendix II (exempt) - please be aware that this lot will require an export and import licence to be sold outside of the UK, this will be the responsibility of any successful buyer. **£200-400**

198



A LARGE TAXIDERMY WILD BOAR HEAD MOUNT A Large Taxidermy Wild Boar Head Mount, *Sus scrofa*, late 20th century, mounted on a stained wooden shield board.

(Dimensions: 53cm high, 45cm wide, 64cm deep)

Private collection, Cheshire. **£80-120**

Fine & Classic, 9th Jan, 2025 11:00

199



A TAXIDERMY RED DEER HEAD MOUNT A Taxidermy Red Deer Head Mount, *Cervus elaphus*, circa mid-20th century, with twin four and five-point antlers, on stained wooden shield board.

(Dimensions: 75cm high, 53cm wide, 40cm deep)

Private collection, Cheshire. **£150-250**

200



A GOOD TAXIDERMY IMPALA HEAD AND NECK MOUNT A Good Taxidermy Impala Head and Neck Mount, *Aepyceros melampus*, on oak shield board with applied ivory plaque inscribed *Impala East Africa 1903*.

(Dimensions: 103cm high, 46cm wide, 46cm deep (including board))

Private collection, Cheshire. **£150-250**

201



A TAXIDERMY PELZELN'S GAZELLE HEAD MOUNT A Taxidermy Pelzeln's Gazelle Head

Mount, *Gazella pelzelni*, on oak shield board bearing applied ivory plaque inscribed *Pelzelni Gazelle Somaliland 1901*.

(Dimensions: 87cm high, 30cm wide, 40cm deep)

Private collection, Cheshire. **£80-120**

202



A TAXIDERMY RED DEER HEAD MOUNT A Taxidermy Red Deer Head Mount, *Cervus elaphus*

, circa late 19th/early 20th century, with twin three- and four-point antlers, on stained shaped wooden shield.

(Dimensions: 95cm high, 72cm wide, 42cm deep)

Private collection, Cheshire. **£80-120**

203



TWO TAXIDERMY HEAD MOUNTS Two Taxidermy Head Mounts, Prongbuck

(*Antilocapra americana*) and Red Deer (*Cervus elaphus*), circa early/mid-20th century, the former with paper label to reverse, both with twin antlers and on stained wooden boards.

(Dimensions: The larger 75cm high, 67cm wide, 45cm deep)

Private collection, Cheshire. **£80-120**

Fine & Classic, 9th Jan, 2025 11:00

204



A TAXIDERMY FALLOW DEER HEAD MOUNT

A Taxidermy Fallow Deer Head Mount, *dama dama*, circa mid-20th century, mounted on a stained wooden board.

(Dimensions: 95cm high, 63cm wide, 39cm deep)

Private collection, Cheshire. **£50-100**

205



A TAXIDERMY FALLOW DEER HEAD MOUNT

A Taxidermy Fallow Deer Head Mount, *dama dama*, circa mid-20th century, with twin eight-point antlers, mounted on a stained wooden shield board.

(Dimensions: 65cm high, 65cm wide, 28cm deep)

Private collection, Cheshire. **£50-100**

206



A TAXIDERMY FOX HEAD MOUNT

Taxidermy Fox Head Mount, *Vulpes vulpes*, circa early 20th century, on oak shield board.

(Dimensions: 30cm high, 22cm wide, 25cm deep (including board))

Private collection, Cheshire. **£40-60**

207



A TAXIDERMY SOUTHERN PUKU HEAD AND NECK MOUNT

With Two Taxidermy Horn and Antler Mounts A Taxidermy Southern Puku Head and Neck Mount, *Kobus vardonii vardonii*, circa early 20th century, together with two pairs of taxidermy horn and antler mounts, one for a buffalo, all on stained wooden boards.

(Dimensions: The first 70cm high, 35cm wide, 44cm deep)

Private collection, Cheshire. **£50-100**

208



THREE TAXIDERMY RED DEER SKULL AND ANTLER DISPLAYS

Three Taxidermy Red Deer Skull and Antler Displays, the largest with six-point antlers, all on stained wooden boards.

(Dimensions: The largest 75cm high, 74cm wide)

Private collection, Cheshire. **£50-100**

209



SANGORSKI (F.), SUTCLIFFE (G.) & FITZGERALD (E., TRANS.) RUBÁIYÁT OF OMAR KHAYYÁM A limited edition, no. 46/550, signed by F. Sangorski and G. Sutcliffe, pub. Siegle, Hill & Co., London, in pictorial tooled vellum boards. **£200-300**

Fine & Classic, 9th Jan, 2025 11:00

210



BARNARD, EDWARD, THE NEW, COMPREHENSIVE, IMPARTIAL AND COMPLETE HISTORY OF ENGLAND, ONE VOLUME. Barnard, Edward, The New, Comprehensive, Impartial and Complete History of England: From the Very Earliest Period of Authentic Information, to the End of the Present Year. Alex Hogg, c. 1785, embellished with upwards of 120 elegant Engravings [...], also a Complete Collection of all the English Coins from Egbert first sole King of all England, and the Great Seals of England from William I to his present Majesty, printed for Alexander Hogg, at No. 16, Pater-noster Row, London, marbled end papers, six decorated spine panels and gilt tooled full calf binding. (Dimensions: 38 x 25.5 x 7.5cm) **£100-200**

211



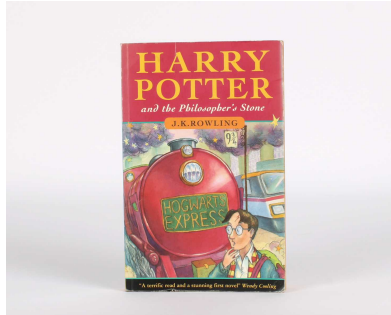
EUSEBIUS OF CAESAREA (ALSO KNOWN AS EUSEBIUS PAMPHILIUS) THE ECCLESIASTICAL HISTORY (AUTORES HISTORIAE ECCLESIASTICAE) The Ecclesiastical History (Autores Historiae Ecclesiasticae), retaining woodcut armorial devices to front and back pages, Latin text with historic hand-written annotations, pub. 1535, in tooled vellum-bound boards with fitted brass catches. **£100-200**

212



GOULD (R. F.) THE HISTORY OF FREEMASONRY The History of Freemasonry, in three volumes, each housing engraved portrait plates, pub. Thomas C. Jack, London 1884, all in gilt-tooled burgundy morocco boards. **£50-100**

213



ROWLING (J. K.) HARRY POTTER AND THE PHILOSOPHER'S STONE Harry Potter and The Philosopher's Stone, first edition, second impression, paperback, pub. Bloomsbury, London 1997. **£200-400**

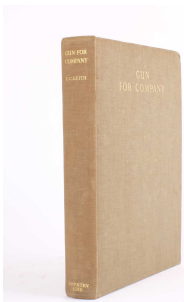
214



ROWLING (J. K.) HARRY POTTER DELUXE EDITION SET Harry Potter Deluxe Edition Set, comprising The Philosopher's Stone, eighth impression, pub. 1999, The Chamber of Secrets, eighth impression, pub. 1999, The Prisoner of Azkaban, ninth impression, pub. 2009, and The Goblet of Fire, fourth impression, pub. 2000, all in pictorial gilt-tooled cloth boards and presented in original sleeve case with gilt-tooled lettering and Hogwarts Express detail. **£100-200**

Fine & Classic, 9th Jan, 2025 11:00

215



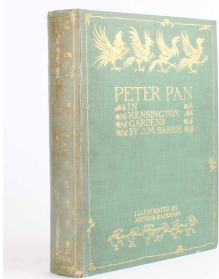
KEITH (E. C.) & HARRISON (J. C., ILL.) GUN FOR COMPANY A first and limited large paper edition, no. 81/75, signed by author and illustrator, pub. Country Life Ltd., London 1937, in tooled cloth boards. **£40-60**

216



JOHNSON (S.), STEEVENS (G.) ET AL. THE PLAYS OF WILLIAM SHAKESPEARE IN TEN VOLUMES Presented in two sets, the earlier edition pub. 1773, the second "Revised and Augmented" edition pub. 1778, both first volumes featuring engraved portrait frontispiece and preface by Johnson, all in tan calf bindings, together with a later collected Works (numerous af). **£50-100**

217



BARRIE (J. M.) & RACKHAM (A., ILL.) PETER PAN IN KENSINGTON GARDENS Housing fifty tipped-in coloured plates, pub. Hodder & Stoughton, London, in pictorial tooled green cloth boards. **£60-100**

218



GIBBON (E.) THE HISTORY OF THE DECLINE AND FALL OF THE ROMAN EMPIRE Twelve vols., printed by Plummer and Brouls for W. Allason [et al.], London 1821, in half green calf and marbled boards with tooled spines and marbled page edges. **£100-200**

219



NAPOLEONIC INTEREST - BOURIENNE (L.), HAZLITT (W.) & JUNOT (L.) "MEMOIRS OF NAPOLEON", "THE LIFE OF NAPOLEON" & "MEMOIRS OF MADAME JUNOT, DUCHESSE D'ABRANTES" Three sets, the first "Memoirs of Napoleon" in four vols., the second "The Life of Napoleon" in six vols. and the third "Memoirs of Madame Junot, Duchesse d'Abrantes" in six vols., all imperial edition de luxe, no. 225/1000, each with pictorial frontispiece, pub. The Grolier Society, Edinburgh Press, in half tan calf boards. **£100-200**

220



Fine & Classic, 9th Jan, 2025 11:00

HASSALL (A., GEN. ED.) PERIODS OF EUROPEAN HISTORY Eight volumes with maps, comprising "The Dark Ages 476-918" by C. Oman, "Empire & The Papacy 918-1273" by T. F. Tout, "Close of the Middle Ages 1273-1494" by R. Lodge, "Europe in the XVIth Century 1494-1598" by A. H. Johnson, "Ascendancy of France 1598-1715" by H. O. Wakeman, "Balance of Power 1715-1789" by A. Hassall, "Revolutionary Europe 1789-1815" by H. Morse Stephens and "Modern Europe 1815-1899" by W. Alison Phillips, pub. Rivingtons, London 1898-1901, in half tan calf boards. **£40-60**

221



GOLFING INTEREST - FARRAR (G. B.) THE ROYAL LIVERPOOL GOLF CLUB, A HISTORY, 1869-1932 Foreword by Bernard Darwin, with illustrations and course plan, pub. Willmer Brothers & Co. Ltd, Birkenhead 1933, in gilt tooled green cloth boards, together with three silver ashtrays engraved with the Royal Liverpool Golf Club coat of arms by Walker & Hall, Sheffield 1947 (x1) and 1951 (x2). **£80-120**

222



NORTH-WEST CRICKET INTEREST AN EXTENSIVE ALBUM OF PRE- AND POST-WWI EPHEMERA An Extensive Album of Pre- and Post-WWI Cricketing Ephemera, principally relating to Cheetham Hill Cricket Club as well as Manchester and later Lancashire Cricket Clubs from 1910-28, consisting of Season booklets for Cheetham 1911, 1924 and 1926, a Kersal Rugby Football Club Season 1920-21 booklet, teamsheets/match announcements, two dinner menus for Lancashire Country & Manchester Cricket Club 1924 and an extensive series of annotated newspaper clippings of articles, results and other matters relating to the above clubs, clippings to front page relate to the player E. A. Rothband and his contributions to the Manchester Jewish Eleven, the album bears an autograph of this name to the front cover. **£50-100**

223



RAILWAY INTEREST A COLLECTION OF ELEVEN CAST IRON WAGON PLAQUES A Collection of Eleven Cast Iron Wagon Plaques, all circa mid-20th century, comprising three larger examples for LMS, G. W. Ry. and M railways with the remaining smaller examples including three for Wednesbury Works Birmingham, two LMS for Wolverton 1924 and Derby 1946, two for Motherwell 1947 and single Wadfield 1936. **£60-100**

224



Fine & Classic, 9th Jan, 2025 11:00

RAILWAY INTEREST A COLLECTION OF FIFTEEN CAST IRON WAGON PLAQUES A Collection of Fifteen Cast Iron Wagon Plaques, all circa mid-20th century, comprising two larger for G.W.Ry. no. 148262 and E. no. 314912 with the remaining including two shaped examples for Cravens Sheffield 1946 and 1947, also Head Wrightson & Co. Thornby-on-Tees 1947, varied LMS and single W. Swindon 1921. **£60-100**

225



RAILWAY INTEREST A COLLECTION OF SEVEN LMS WAGON PLAQUES A Collection of Seven LMS Wagon Plaques, all circa mid-20th century, those for 12 tons nos. 471751, 749299, 740821, 749179, 742706 and 742754 with single for 13 tons no. 476922. **£50-80**

226



RAILWAY INTEREST A COLLECTION OF SIX CAST IRON WAGON PLAQUES A Collection of Six Cast Iron Wagon Plaques, all circa mid-20th century, comprising L.N.E.R. Darlington nos. 275948 and 294183, G.W.Ry. 10 and 13 tons nos. 100879 and 27034 respectively, M. 13 tons no. 479027 and W. 20 tons no. 50034. **£50-80**

227



RAILWAY INTEREST A COLLECTION OF SIX CAST IRON WAGON PLAQUES A Collection of Six Cast Iron Wagon Plaques, all circa mid-20th century, comprising five E. with two 13 tons nos. 311244 and 312074, 18 tons no. 295702, 20 tons no. 250559 and 21 tons no. 304890, also a single S.R. (Southern Railway) 13 tons plaque no. 13037. **£50-80**

228



GREAT BRITAIN POSTAL HISTORY AND STAMPS "FREE FRANKS", QUEEN VICTORIA AND LATER GB A Collection of British Postal History and Stamps In Two Well Presented and Extensively Annotated Folders, including nine "Free" Frank covers dated 1826-1839 with numerous stamp variations and both morning and evening duty examples displayed, Victorian 1840 1d "Penny" Black (plate 6 with red 'Maltese Cross' cancellation), 1d red plates, numeral cancels with offices including Nantwich, Norwich, Nottingham, Hull, Leeds, Maidstone, Battle, Windemere and Great Yarmouth, 'pre-fix' numerals, 1d blue (on cover, plate 9, perf 12) and three official stamps, also a selection from EVII to EII, Franco-British Exhibition 1908 postcards including one with exhibition postmark, early machine cancellations, slogan postmarks, WWI patriotic labels, British Empire Exhibition 1924-5, and further miscellanea including Victorian 5d Railway Telegraph Office Cancellation, "Poached Egg" label, National Telephone Co., advertising labels, private cachets, Philatelic Congress souvenirs and early 19th century letters bearing unusual or noteworthy marks with additional regional interest. **£200-400**

Buyer's Premium of 25% +VAT on each lot

Fine & Classic, 9th Jan, 2025 11:00

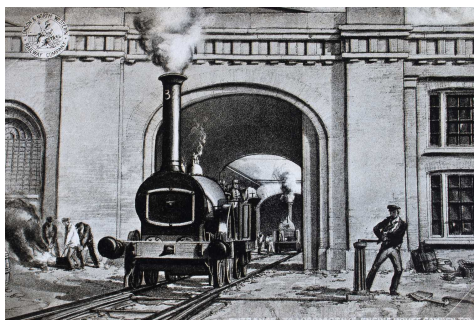
229



NORTH-WEST AND SCOTLAND RAILWAY AND POSTAL HISTORY INTEREST LANCASTER & CARLISLE RAILWAY AND CALEDONIAN RAILWAY A Well Presented and Extensively Annotated Display Relating to the Lancaster & Carlisle Railway and Caledonian Railway, the first section including Lancaster 'upright' Duplex cancel SP 21 dated 1857, 'side by side' Duplex cancel on Q.V. 1d Stationery Envelope uprated by 1 1/2d from Lancaster Banking Co. to Canada JA 11 dated 1895, postcards for intermediate stations including Hest Bank (with example bearing 'rubber' handstamp), Milnthorpe (one with temporary handstamp), Tebay, Shap (including receiving stamp on latter dated 1854 and Duplex cancel No. B59), Penrith (including 1903 train crash card), Southwaite, Wreay (including 1/2d Postal Stationery envelope dated 1919), Carlisle (including Duplex cancel No. 165 envelope dated 1865, double-ring cancel dated 1919 and a letter dated 1876 on L&NWR Castle Station Lancaster headed paper) and further Victorian covers with Duplex and double-ring postmarks (including Burton No. 5 Duplex No. 153 issued 1844); the second section with similar Victorian and later material for stations including Gretna, Kirtlebridge, Lockerbie (including pre-1866 "Lockerby" postmarked sheet dated 1850), Beattock (including Cancelled No. 505 inverted stamp), Abington (including 1863 stamped envelope addressed to Lady Colebrooke), Carstairs, Braidwood, Carlisle (including Scottish double-ring cancel and "Skeleton" postmark) and Glasgow (including May 19 (18)71 wrapper to Rome with Glasgow Duplex cancel, P.O. No. 159 1893 postmark, 1907 'Duty' postmark), also two L.C./R. handstamp envelopes (only known on London mail addressed to Scotland on the Carlisle-Glasgow/Edinburgh routes 1858-1886) and a London Midland and Scottish Railway 3d Parcel Stamp dated 1938 Glasgow and addressed to Paris, envelope with Carlisle & Glasgow R.P.O. Sorting Carriage mark, another with Glasgow-Carlisle Sorting Tender stamp dated 1872 with No. 159 cancel and two further Sorting Carriage or Tender stamped cards. **£150-250**

Fine & Classic, 9th Jan, 2025 11:00

230



LONDON AND MIDLANDS RAILWAY AND POSTAL HISTORY INTEREST LONDON TO BIRMINGHAM RAILWAY A Well Presented and Extensively Annotated Display Relating to the stations on the London to Birmingham railway, with Victorian and later supporting material including Euston Station (including 1838 L.N.W.R. postcard, 1856 Cover to Wishaw with 6d extra Postage for use of "Late" bag and vertical 4 bar No. 964 cancel, registered letter receipt dated 1947 and Euston to Camden line construction postcards), Willesden, Harrow (including 1848 'Post Paid' envelope, Duplex No. D75 cancel postcard and LMS 1s. Parcel Stamp), Pinner, Watford (including L.N.W.R. Colne Viaduct 1837, Watford Tunnel construction and station flood 1907 postcards, LNWR 6d Parcel Stamp 12-4-1903, Duplex No. 849 on 'mourning' cover), King's Langley RSO, Boxmoor, Berkhamstead (including Duplex No. 65 dated 1980 to Sweden), Tring (including 'Fatal Railway Accident Tring Station June 1 1908 and other pictorial cards), Leighton Buzzard (including 1846 datestamp mourning cover), Bletchley (including 'dumb' cancel and censor mark envelope), Wolverton (including 'squared circle' cancel May 24 1908), Roade (including LNWR 'Cutting' postcards), Weedon (including No. 19 1843 datestamp on reverse of letter to Ireland also bearing Dublin 'diamond' datestamp), Rugby (including 1d 'Postage Due' handstamp 4 April 1902, 'double-ring +' postmark dated 1904 and 'squared circle' (3 Arcs) Type postmark dated 1913, Coventry (including Duplex No. 223), Birmingham (including L&NWR 5d Parcel Stamp, 'squared circle' (type 1) to Switzerland JY 20/(18)86, Duplex cancel JA 15/(19)06) and Market Drayton (including 1844 stamped envelope, letter and carriage paid slip). **£150-250**

231



NORTH-WEST RAILWAY AND POSTAL HISTORY INTEREST LANCASTER & PRESTON JUNCTION RAILWAY, TRAVELLING POST OFFICES AND CREWE STATION A Well Presented and Extensively Annotated Display, the first section focusing on the station communities along the L&PJR via picture postcards, partial Parcel Post label dated 1901 for Bay Horse, penny red with Scorton cancel stamp, two Garstang postcards (one with RSO datestamp), an L&NW 2d Letter Stamp cancelled at Preston Station 8-4-09, an 1845 prepaid 1d envelope addressed to Drogheda, Ireland, a Preston Duplex cancel 628 30-10-96 cover to Carlisle and a Preston Double Ring cancel 18-04-08; the second section focusing on Travelling Post Offices (TPOs) including E/NR marked letter dated OC25 1855 sent via Watford to Lady Adelaide in Moore Park with further covers displaying marks including M/NR, "Star" NWR night mark, UP Special, Late Fee Birmingham to Crewe and numerous further Crewe-related TPO covers and postcards; the third section focusing on Crewe Station, its Post Office, Station Postmarks and Crewe TPO postmarks with examples including Double-Arc unframed Cancel issued 14 April 1855, small single-ring datestamp issues 28 February 1859, duplex postmarks of four and three lines, Squared Circle datestamps, double-ring handstamp types 1 and 2 (including variations), single-ring datestamp, postage due examples and parcel stamps. **£100-200**

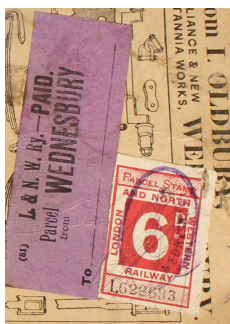
232



Fine & Classic, 9th Jan, 2025 11:00

NORTH-WEST AND MIDLANDS RAILWAY AND POSTAL HISTORY INTEREST GRAND JUNCTION RAILWAY A Well Presented and Extensively Annotated Display Relating to the Grand Junction Railway, with covers, postcards and related supporting material including Newton Junction (including undated postmark cancelled 847 dated 1845 to reverse), Warrington (including Duplex cancel no. 847), Moore, Preston Brook (including FE 7/1845 cover and DE2/1849 cover), Winsford (including B67 Duplex cancel dated 1867, 1903 wrapper and 1908 postcard with double-ring RSO datestamp, Minshull Vernon, Betley Road (including 2d Railway Letter Stamp with pen X, two handstamps and 'Crewe Station' datestamp), Stafford (including 'Station' handstamp envelope dated 1872, two LNWR Parcel Stamps and Registered Letter dated 1880), Madeley, Penkrige (including 'Free Franked' letter front dated 1838 and partial pre-paid 1d letter with datestamp dated 1844 and Duplex no. 605), Spread Eagle, Wolverhampton (including sideways Duplex no. 905 dated 1857, Art & Industrial Exhibition 1902 souvenir label and double-ring cancels), Willenhall (including 1837 letter with undated Bilston town stamp), Darlaston (including 1844 letter), Walsall and Perry Barr (including Registered cover dated 1900 and overprinted LMS Parcel Stamp dated 1 Jan 1927. **£100-200**

233



NORTH-WEST RAILWAY AND POSTAL HISTORY INTEREST LONDON AND NORTH-WESTERN RAILWAY A Well Presented and Extensively Annotated Display Relating to the North-West, Crewe Station and Crewe-Chester Railway, comprising six sheets of parcel stamps, newspaper parcel stamp, news correspondence stamp, letter to a railway company investor signed by J. Challinor dated 1883, notes on decommissioned regional intermediate stations and post offices with supporting historical notations and postal history evidence including Victorian and Edwardian postcards and envelopes (examples include Beeston Castle, Tarporley, Tattenhall and Waverton) with a focus on Chester Station, relevant material including "Squared Circle" and "Broken Circle" postmarks, also includes a memorandum "From the Station Master's Office, Northampton Castle". **£80-120**

234



LOUIS VUITTON, PARIS RARE AND EARLY MOTORING TRUNK Circa 1910, dark tan stitched Vuittonite exterior with twin brass loop handles and mounted with wooden stacking brackets, these stamped *Louis Vuitton* [...] to underside, set with lock plate and twin hinge-action catches, these and the brass studs all stamped *Louis Vuitton* [...], the canvas-lined interior retaining original fitted pull-out tray complete with twin leather handles and canvas straps, the hinged lid retaining original applied *Louis Vuitton 1. Rue Scribe* [...] paper label and stamped in purple ink with serial no. 206928. (Dimensions: 70cm wide, 48cm deep, 27cm high) Private individual, Greater Manchester. **£1,500-2,000**

Fine & Classic, 9th Jan, 2025 11:00

235



A CHROMED ROLLS-ROYCE "SPIRIT OF ECSTASY" CAR MASCOT DESIGNED BY CHARLES ROBINSON SYKES (BRITISH 1875-1950) A Chromed Rolls-Royce "Spirit of Ecstasy" Car Mascot, stamped @ *Rolls-Royce Motors Limited* and mounted on a rectangular marble plinth bearing two further applied Rolls-Royce chromed and enamelled badges. (Dimensions: 12.5cm high, 13cm long overall) **£50-80**

236



BENTLEY MOTORS INTEREST A COLLECTION OF ORIGINAL CAR BADGES A **Collection of Original Car Badges**, comprising three engine bay badges or plates all inscribed *6.75 Litre Twin Turbo*, nine chromed and enamelled name badges including *Silver Spirit II*, *Silver Wraith III*, *Turbo R*, *Brooklands* and *Bentley*, a smaller oval *B* badge on red ground and a further *Bentley* badge. **£50-80**

237



TWO 1970S PADDINGTON BEARS BY GABRIELLE DESIGNS OF DONCASTER Two 1970s Paddington Bears by Gabrielle Designs of Doncaster, in original outfits of orange hats, light and dark brown coats respectively and yellow Dunlop rubber boots, both with "Please Look After This Bear. Thankyou." labels and retaining additional manufacturer labels. (Dimensions: 47cm high) **£50-80**

238



A "1920 CLASSIC" TEDDY BEAR BY STEIFF, GERMANY A "1920 Classic" Teddy Bear by Steiff, in golden mohair with jointed limbs and growler, retaining "button-in-ear" and original labels, presented with a "My Friend is Called Teddy" badge, in original branded box and carrier bag. (Dimensions: 35cm high) **£50-80**